

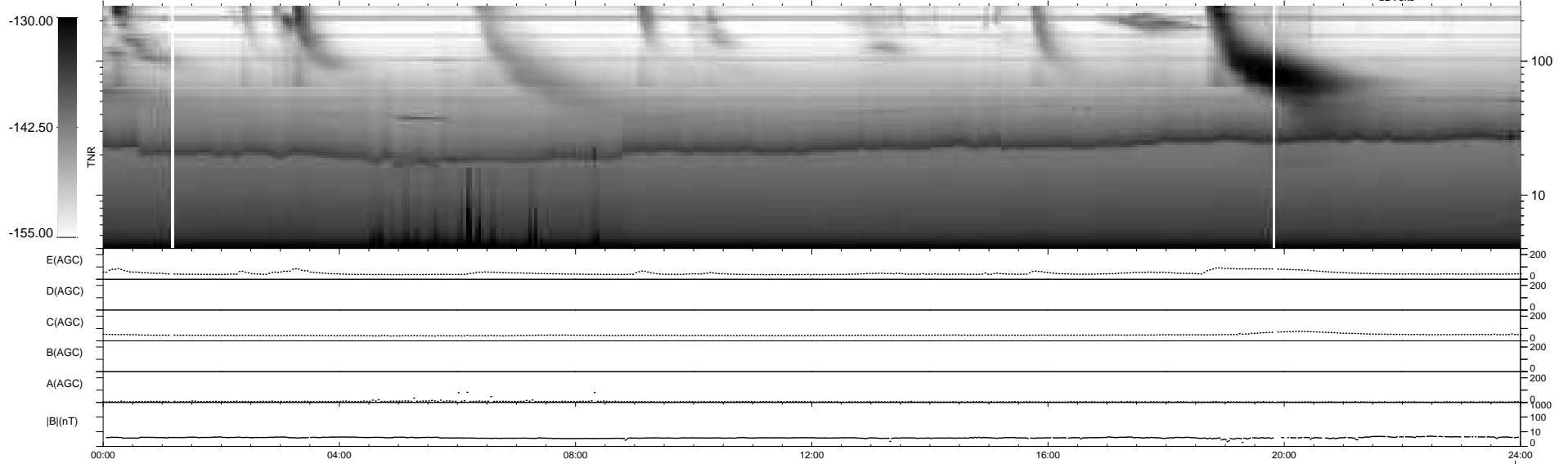
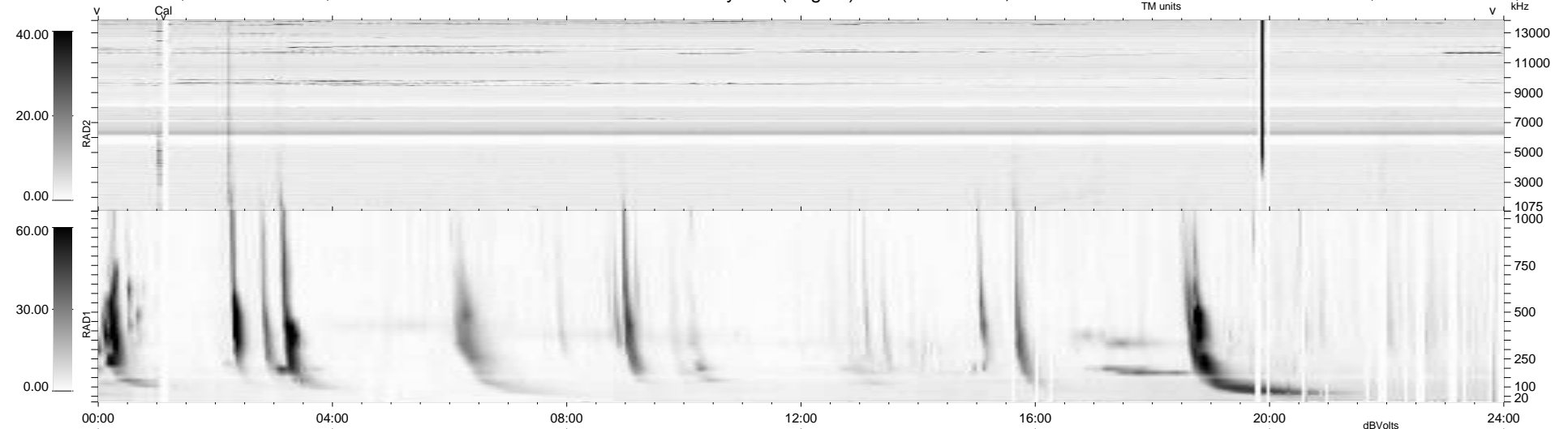
34 bad + 904 good MF/939MF projected (96%) - 1 missing MF
 Avg interval = 180 secs
 Re = 211.91 (204.78, -53.50, -10.35 GSE)

windlib 2.0b

LZ version = v01

WIND/WAVES Summary Plot (Page 1) for 27-JUN-2014, DOY = 178

DAILY 2014-06-28 20:46:05
 Re = 210.89 (204.52, -50.25, -10.86 GSE)



RAD2
 Antenna Ey
 Mode LIN(1)
 SUM/SEP SEP
 Toggle OFF
 RAD1
 Antenna Ex
 Mode LIS(2,4)
 SUM/SEP SUM
 Toggle OFF
 TNR
 Antenna ExEy
 Mode A-32
 Sweep ACE