

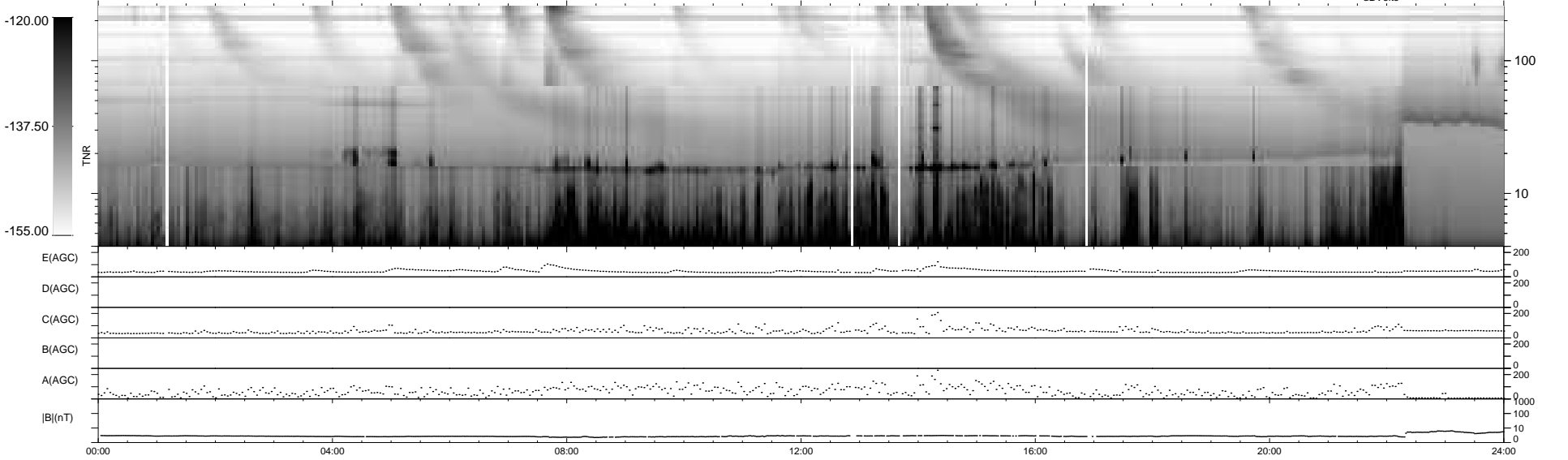
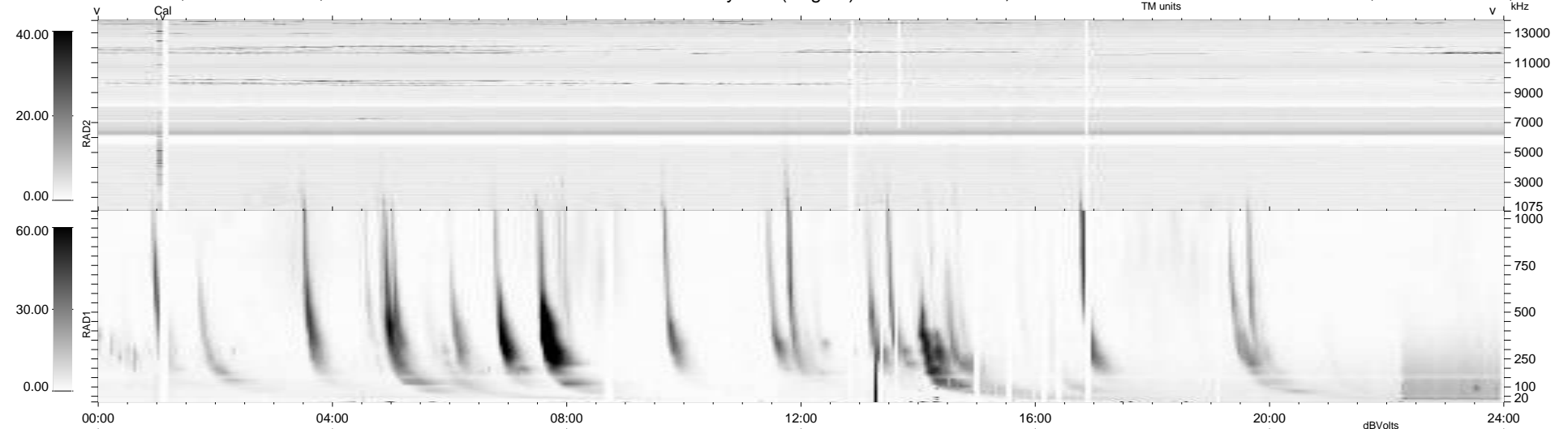
36 bad + 903 good MF/939MF projected (96%) - 0 missing MFs
 Avg interval = 180 secs
 Re = 216.18 (205.79, -65.71, -8.14 GSE)

windlib 2.0b

LZ version = v01

WIND/WAVES Summary Plot (Page 1) for 23-JUN-2014, DOY = 174

DAILY 2014-06-24 21:46:03
 Re = 215.11 (205.54, -62.83, -8.71 GSE)



```

RAD2
Antenna Ey .....
Mode LIN(1) .....
SUM/SEP SEP .....
Toggle OFF .....

RAD1
Antenna Ex .....
Mode LIS(2,4) .....
SUM/SEP SUM .....
Toggle OFF .....

TNR
Antenna ExEy .....
Mode A-32 .....
Sweep ACE .....
  
```