

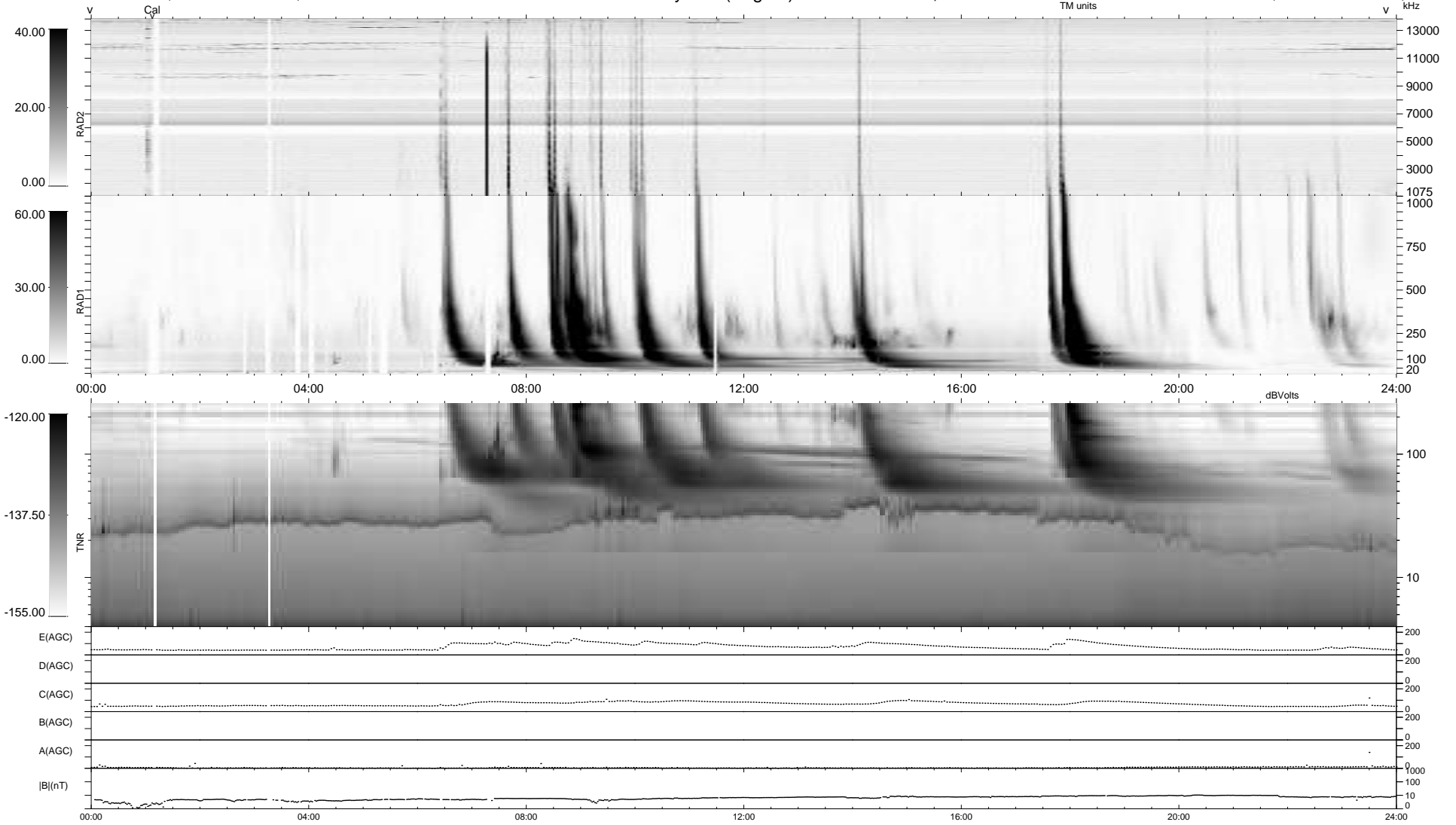
27 bad + 912 good MF/939MF projected (97%) - 0 missing MFs  
 Avg interval = 180 secs  
 Re = -222.78 (207.67, -80.52, -4.47 GSE)

windlib 2.0b

LZ version = v01

### WIND/WAVES Summary Plot (Page 1) for 17-JUN-2014, DOY = 168

DAILY 2014-06-19 10:47:00  
 Re = 221.67 (207.28, -78.40, -5.10 GSE)



RAD2  
 Antenna Ey .....  
 Mode LIN(1) .....  
 SUM/SEP SEP .....  
 Toggle OFF .....  
 RAD1  
 Antenna Ex .....  
 Mode LIS(2,4) .....  
 SUM/SEP SUM .....  
 Toggle OFF .....  
 TNR  
 Antenna ExEy .....  
 Mode A-32 .....  
 Sweep ACE .....