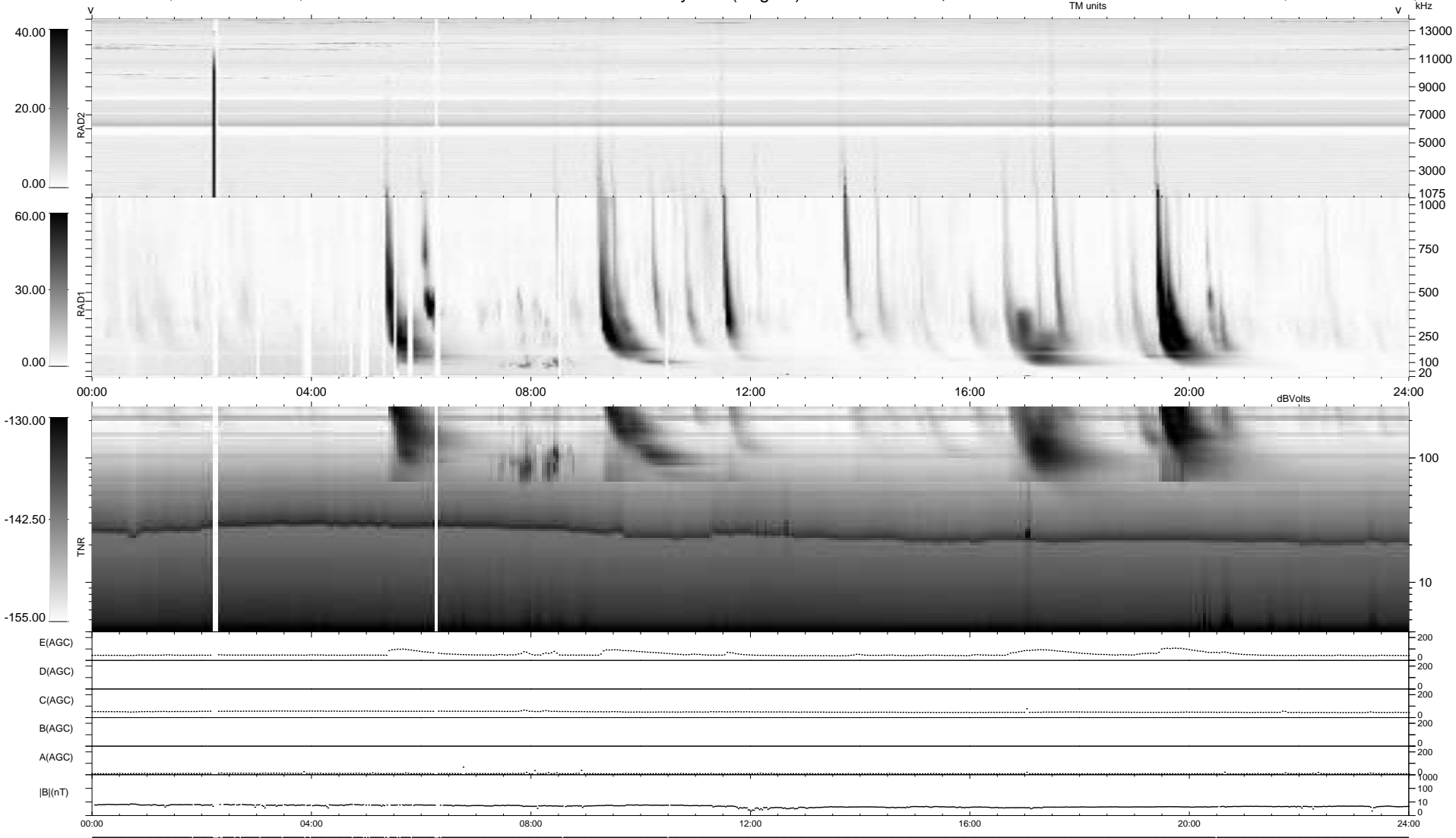


30 bad + 909 good MF/939MF projected (96%) - 0 missing MFs
 Avg interval = 180 secs
 Re = 226.27 (209.21, -86.15, -2.58 GSE)

windlib 2.0b LZ version = v01
 DAILY 2014-06-15 17:46:04
 Re = 225.09 (208.64, -84.41, -3.21 GSE)

WIND/WAVES Summary Plot (Page 1) for 14-JUN-2014, DOY = 165



```

RAD2
Antenna Ey .....
Mode LIN(1) .....
SUM/SEP SEP .....
Toggle OFF .....

RAD1
Antenna Ex .....
Mode LIS(2,4) .....
SUM/SEP SUM .....
Toggle OFF .....

TNR
Antenna ExEy .....
Mode A-32 .....
Sweep ACE .....
  
```