

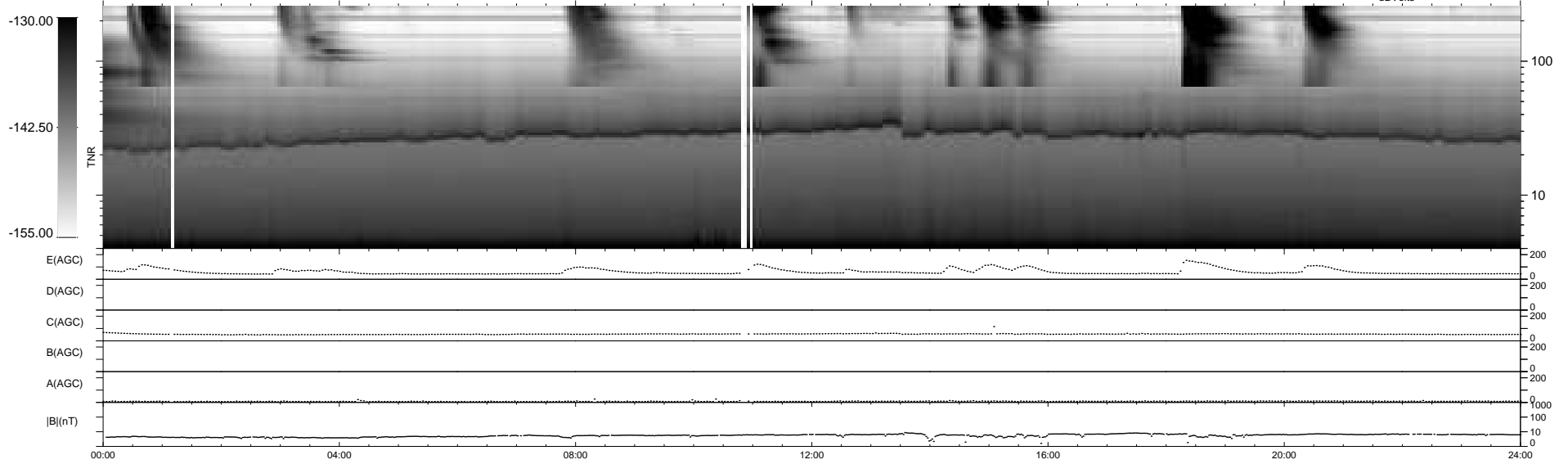
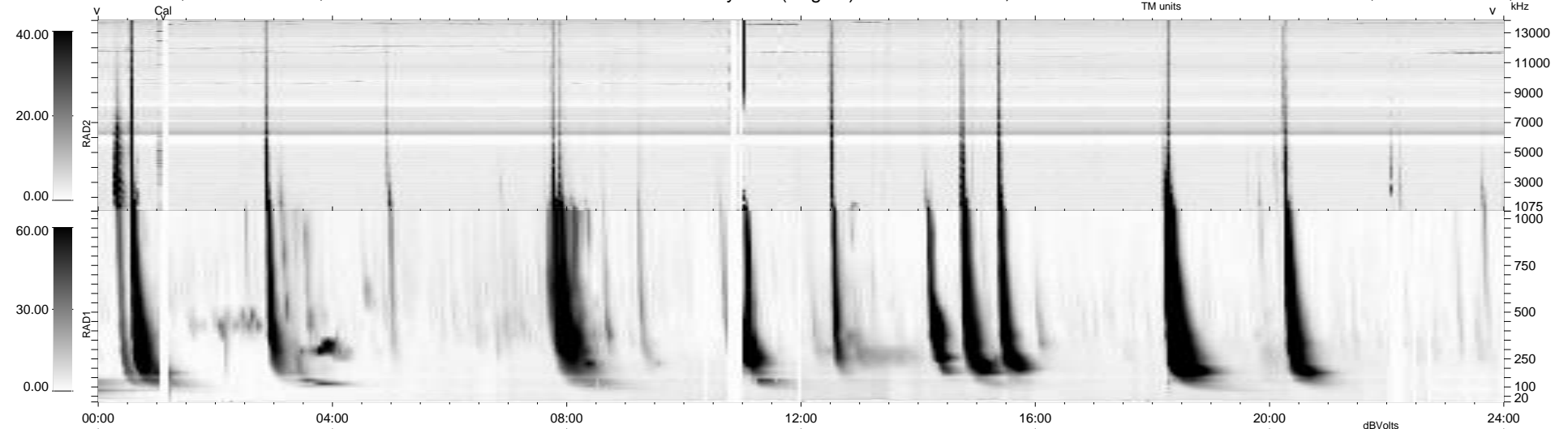
32 bad + 907 good MF/939MF projected (96%) - 0 missing MFs  
 Avg interval = 180 secs  
 Re = 227.49 (209.86, -87.79, -1.95 GSE)

windlib 2.0b

LZ version = v01

### WIND/WAVES Summary Plot (Page 1) for 13-JUN-2014, DOY = 164

DAILY 2014-06-14 19:46:04  
 Re = 226.28 (209.22, -86.17, -2.58 GSE)



```

RAD2
Antenna Ey .....
Mode LIN(1) .....
SUM/SEP SEP .....
Toggle OFF .....

RAD1
Antenna Ex .....
Mode LIS(2,4) .....
SUM/SEP SUM .....
Toggle OFF .....

TNR
Antenna ExEy .....
Mode A-32 .....
Sweep ACE .....
  
```