

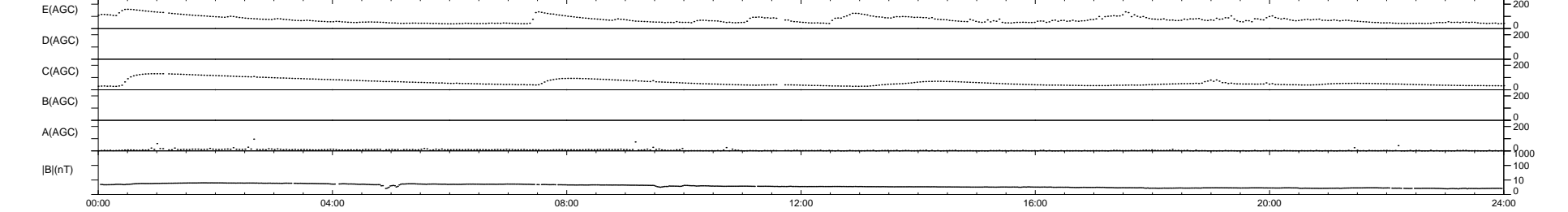
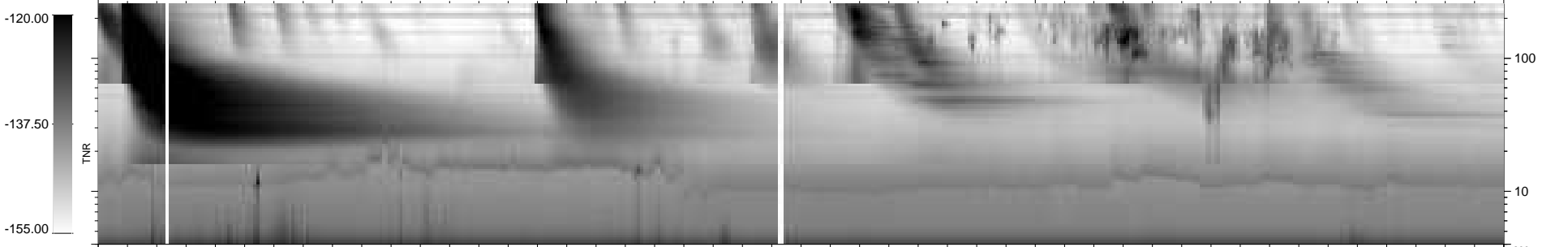
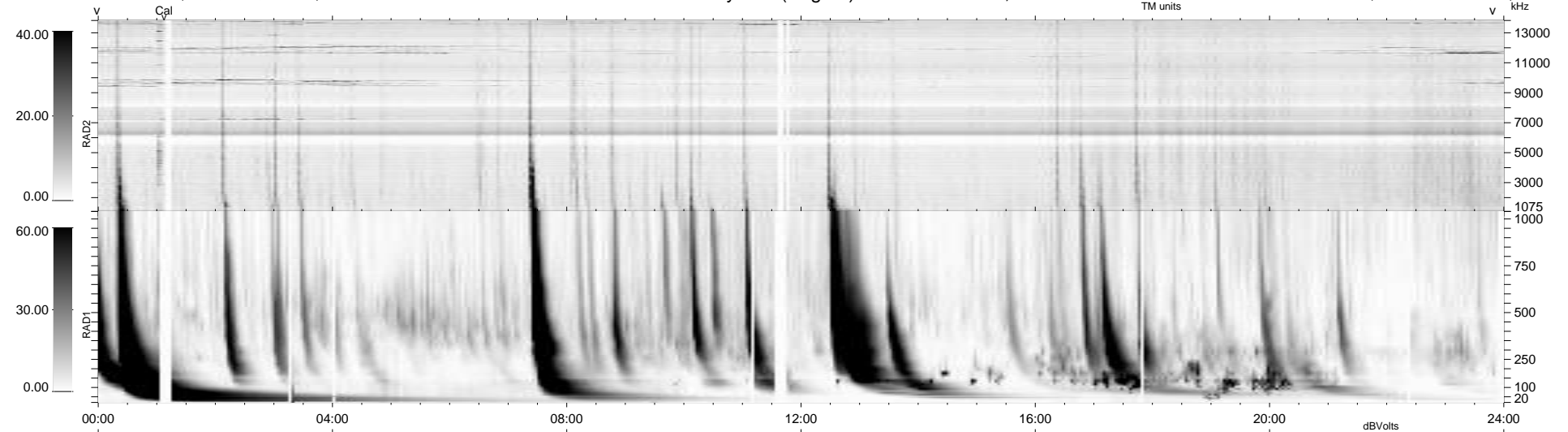
21 bad + 919 good MF/940MF projected (97%) - 0 missing MFs
 Avg interval = 180 secs
 Re = -232.62 (213.09, -93.31, 0.56 GSE)

windlib 2.0b

LZ version = v01

WIND/WAVES Summary Plot (Page 1) for 09-JUN-2014, DOY = 160

DAILY 2014-06-10 19:46:04
 Re = 231.32 (212.20, -92.08, -0.06 GSE)



RAD2
 Antenna Ey
 Mode LIN(1)
 SUM/SEP SEP
 Toggle OFF
 RAD1
 Antenna Ex
 Mode LIS(2,4)
 SUM/SEP SUM
 Toggle OFF
 TNR
 Antenna ExEy
 Mode A-32
 Sweep ACE