

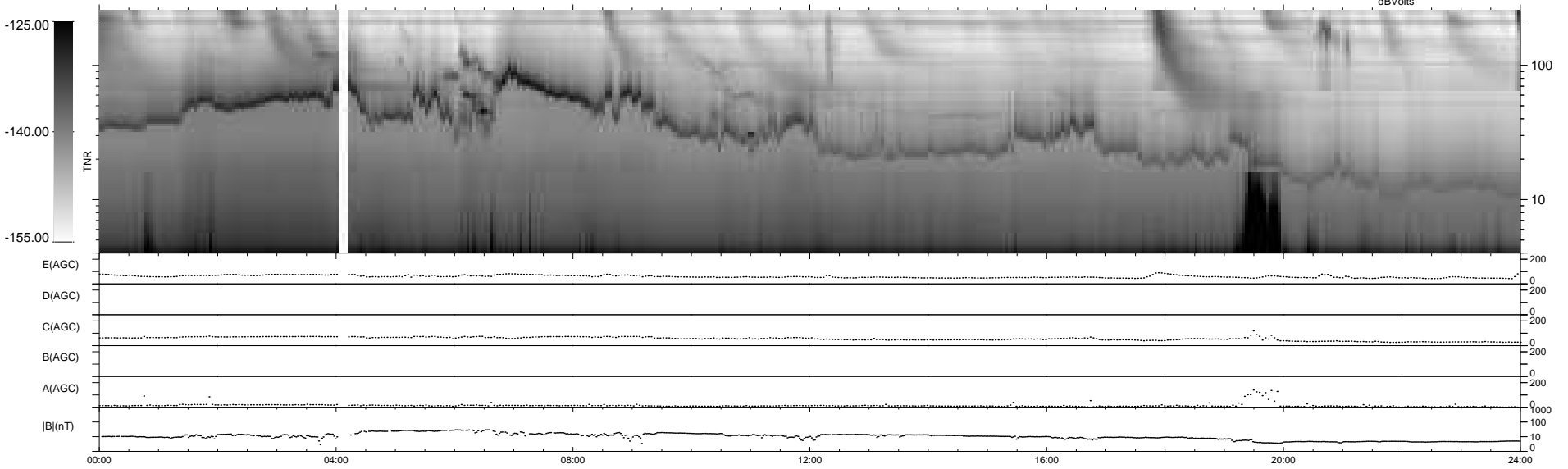
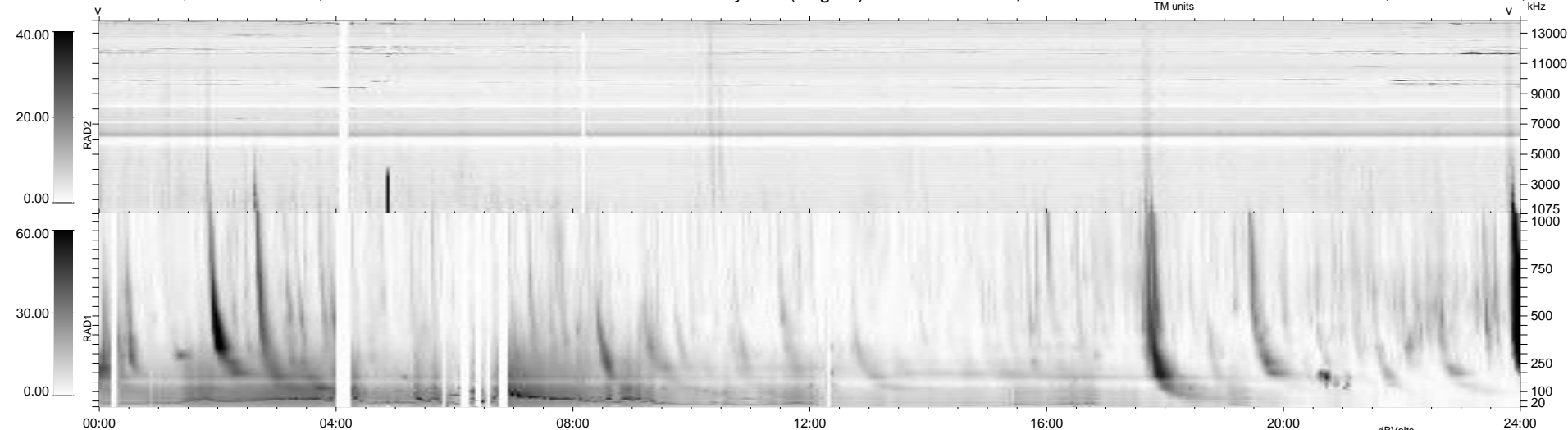
35 bad + 904 good MF/939MF projected (96%) - 0 missing MFs  
 Avg interval = 180 secs  
 Re = -233.96 (214.04, -94.45, 1.19 GSE)

windlib 2.0b

LZ version = v01

### WIND/WAVES Summary Plot (Page 1) for 08-JUN-2014, DOY = 159

DAILY 2014-06-09 16:46:05  
 Re = 232.63 (213.10, -93.31, 0.57 GSE)



RAD2  
 Antenna Ey  
 Mode LIN(1)  
 SUM/SEP SEP  
 Toggle OFF

RAD1  
 Antenna Ex  
 Mode LIS(2,4)  
 SUM/SEP SUM  
 Toggle OFF

TNR  
 Antenna ExEy  
 Mode A-32  
 Sweep ACE