

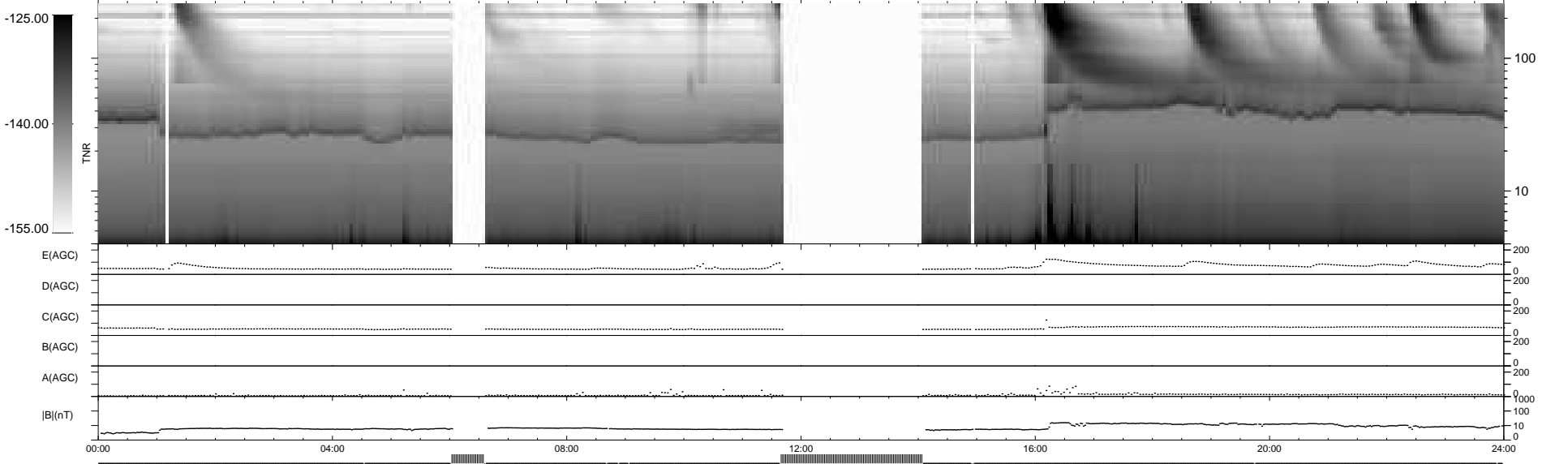
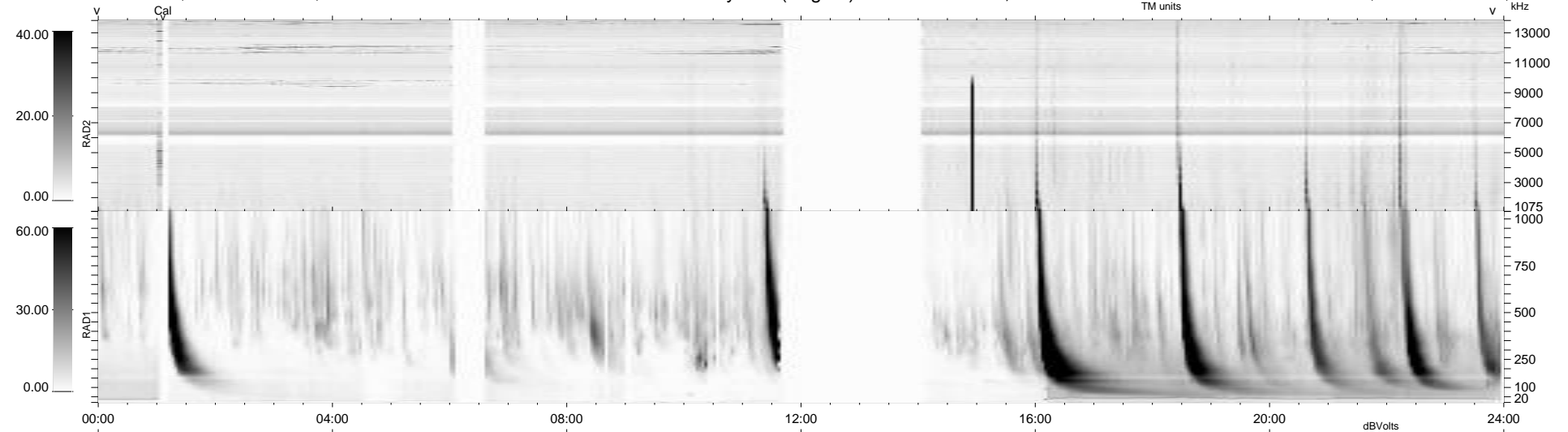
12 bad + 810 good MF/939MF projected (86%) - 117 missing MFs  
 Avg interval = 180 secs  
 Re = - 235.29 (215.03, -95.52, 1.82 GSE)

windlib 2.0b

LZ version = v01

### WIND/WAVES Summary Plot (Page 1) for 07-JUN-2014, DOY = 158

DAILY 2014-06-09 01:46:03  
 Re = 233.96 (214.04, -94.46, 1.20 GSE)



RAD2  
 Antenna Ey .....  
 Mode LIN(1) .....  
 SUM/SEP SEP .....  
 Toggle OFF .....  
 RAD1  
 Antenna Ex .....  
 Mode LIS(2,4) .....  
 SUM/SEP SUM .....  
 Toggle OFF .....  
 TNR  
 Antenna ExEy .....  
 Mode A-32 .....  
 Sweep ACE .....