

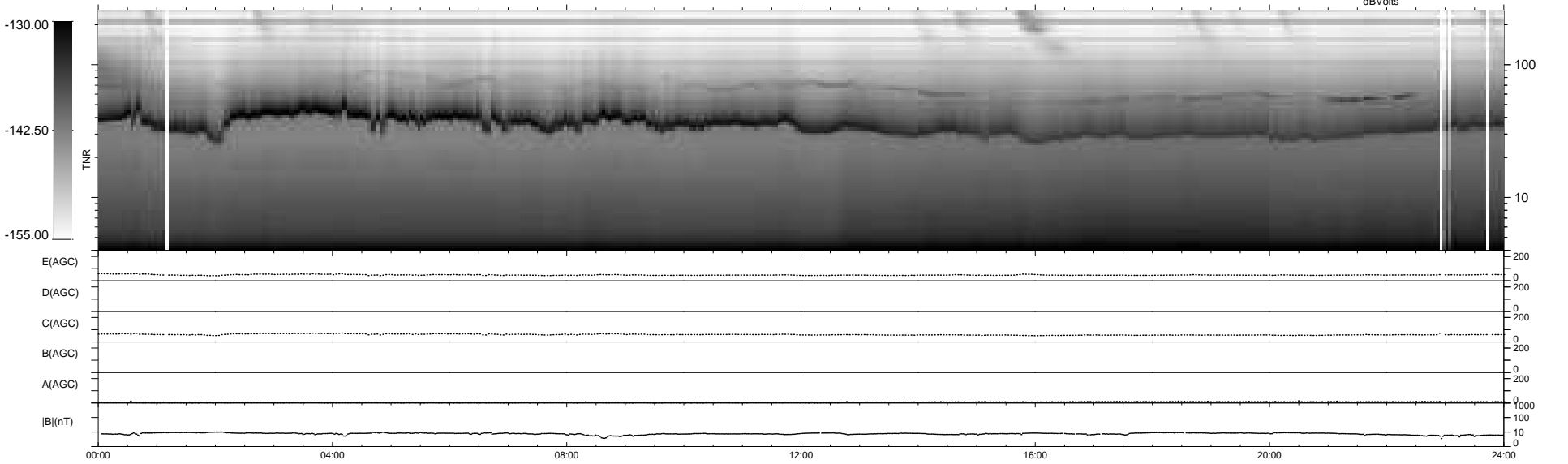
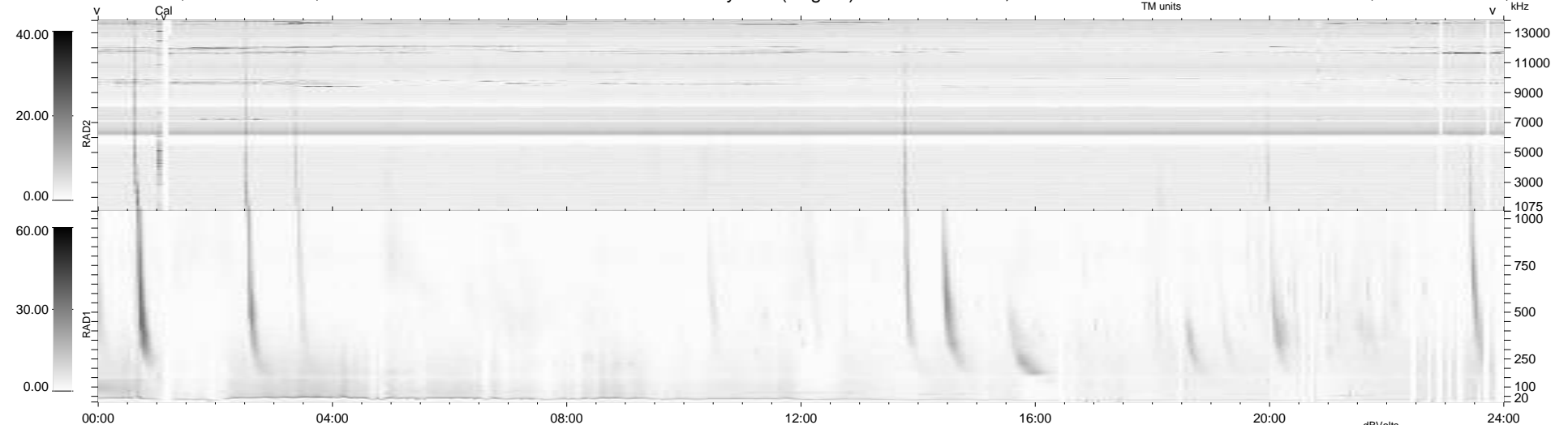
36 bad + 903 good MF/939MF projected (96%) - 0 missing MFs
 Avg interval = 180 secs
 Re = 240.58 (219.26, -98.91, 4.32 GSE)

windlib 2.0b

LZ version = v01

WIND/WAVES Summary Plot (Page 1) for 03-JUN-2014, DOY = 154

DAILY 2014-06-04 06:46:04
 Re = 239.29 (218.18, -98.20, 3.70 GSE)



```

RAD2
Antenna Ey .....
Mode LIN(1) .....
SUM/SEP SEP .....
Toggle OFF .....

RAD1
Antenna Ex .....
Mode LIS(2,4) .....
SUM/SEP SUM .....
Toggle OFF .....

TNR
Antenna ExEy .....
Mode A-32 .....
Sweep ACE .....
  
```