

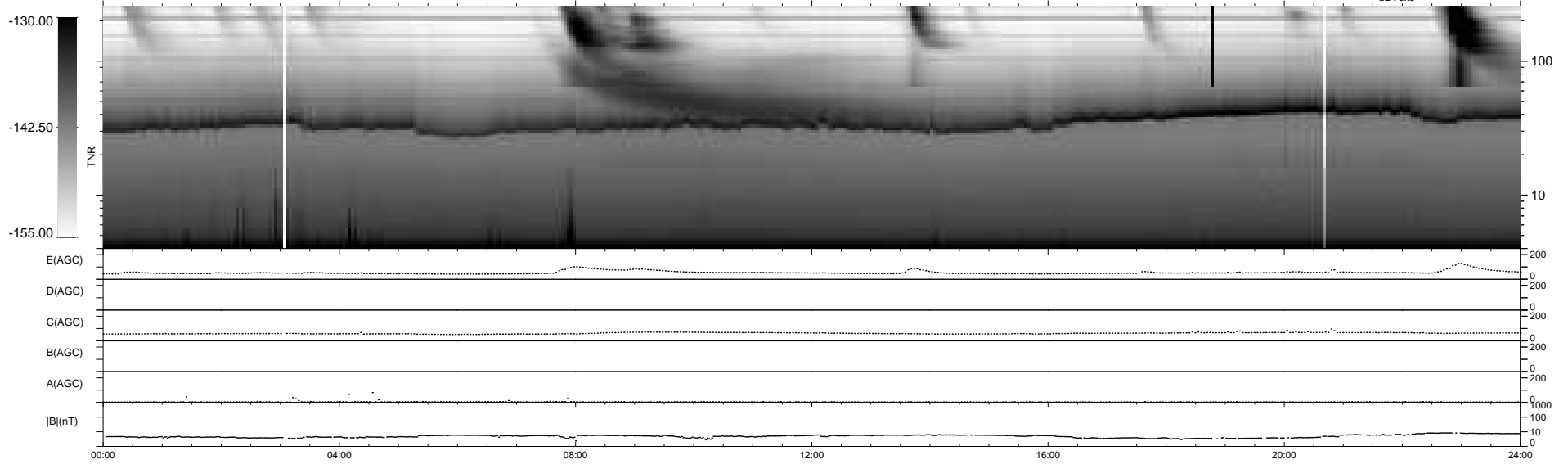
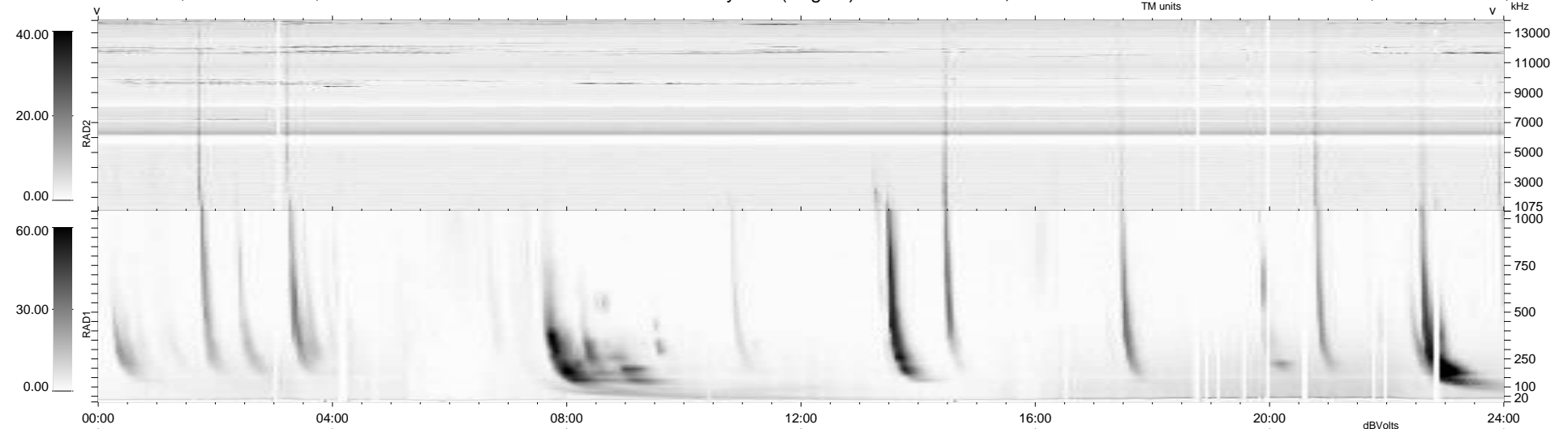
48 bad + 891 good MF/939MF projected (94%) - 0 missing MFs
Avg interval = 180 secs
Re = 241.84 (220.36, -99.53, 4.94 GSE)

windlib 2.0b

LZ version = v01

WIND/WAVES Summary Plot (Page 1) for 02-JUN-2014, DOY = 153

DAILY 2014-06-03 09:46:04
Re = 240.58 (219.27, -98.91, 4.32 GSE)



RAD2
Antenna Ey
Mode LIN(1)
SUM/SEP SEP
Toggle OFF

RAD1
Antenna Ex
Mode LIS(2,4)
SUM/SEP SUM
Toggle OFF

TNR
Antenna ExEy
Mode A-32
Sweep ACE