

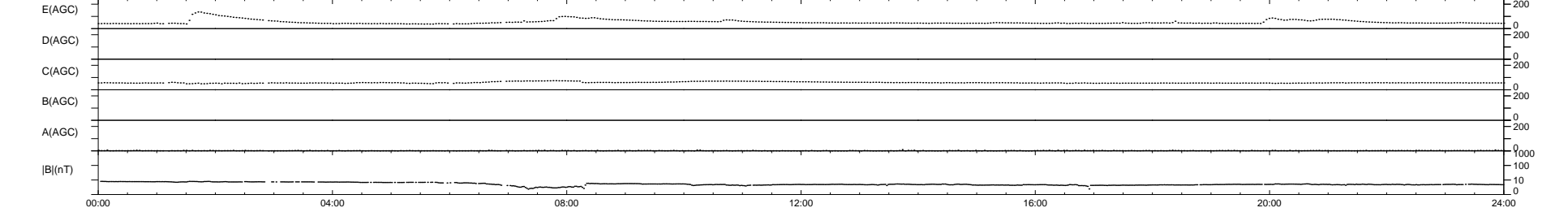
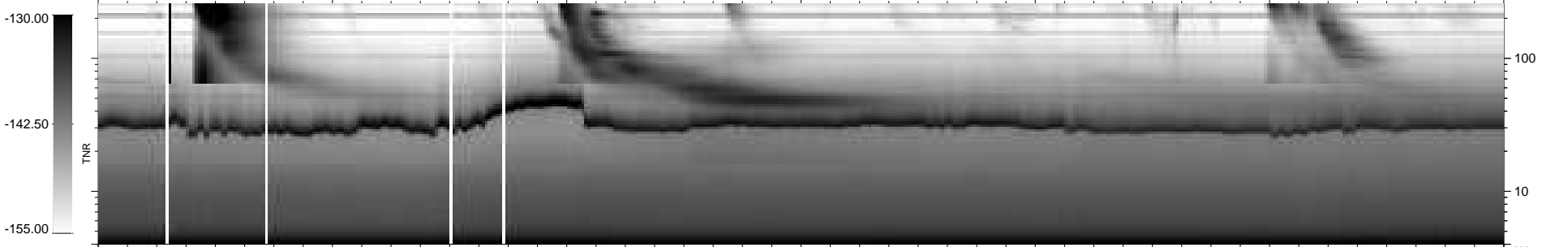
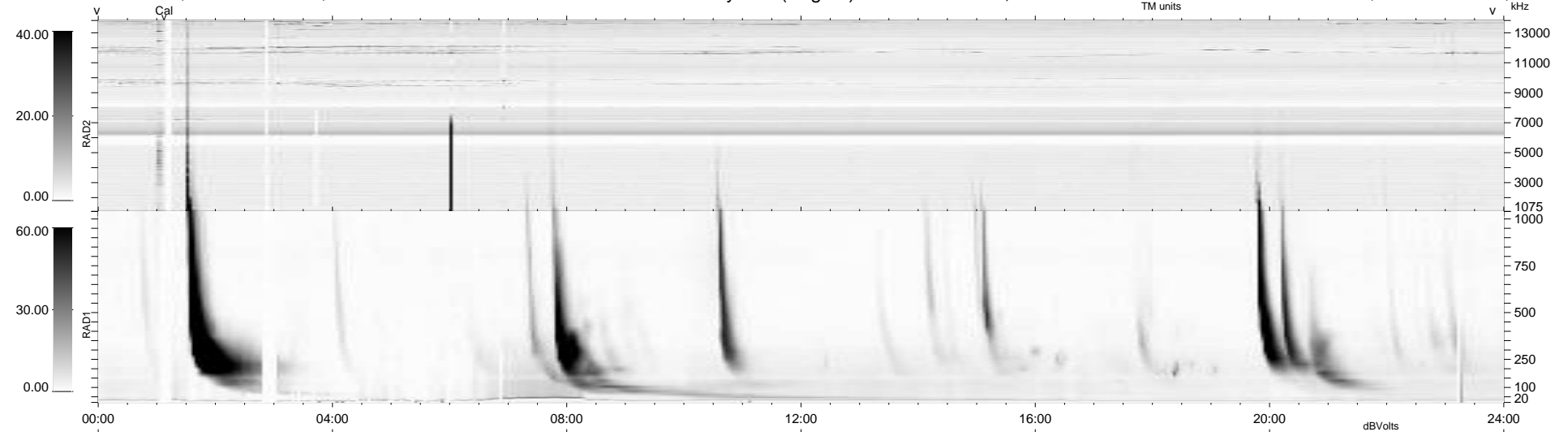
38 bad + 902 good MF/940MF projected (95%) - 0 missing MFs
 Avg interval = 180 secs
 Re = -243.08 (221.46, -100.06, 5.56 GSE)

windlib 2.0b

LZ version = v01

WIND/WAVES Summary Plot (Page 1) for 01-JUN-2014, DOY = 152

DAILY 2014-06-02 08:46:03
 Re = 241.85 (220.37, -99.53, 4.94 GSE)



```

RAD2
Antenna  Ey .....
Mode     LIN(1) .....
SUM/SEP  SEP .....
Toggle   OFF .....

RAD1
Antenna  Ex .....
Mode     LIS(2,4) .....
SUM/SEP  SUM .....
Toggle   OFF .....

TNR
Antenna  ExEy .....
Mode     A-32 .....
Sweep    ACE .....
  
```