

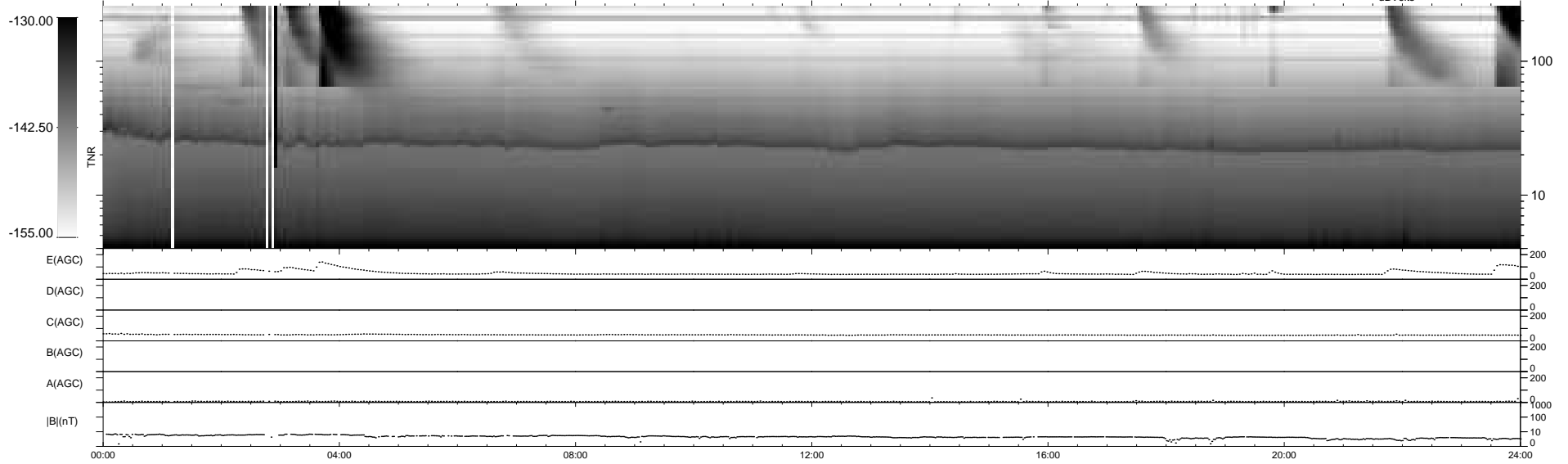
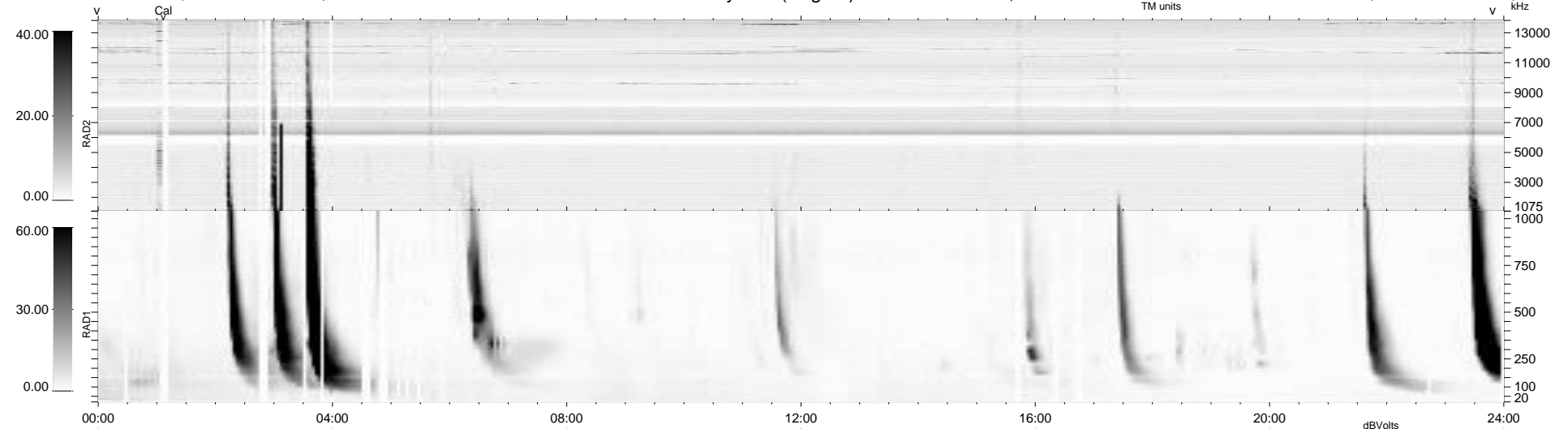
50 bad + 889 good MF/939MF projected (94%) - 0 missing MFs
 Avg interval = 180 secs
 Re = 247.54 (225.81, -101.11, 7.99 GSE)

windlib 2.0b

LZ version = v01

WIND/WAVES Summary Plot (Page 1) for 28-MAY-2014, DOY = 148

DAILY 2014-05-30 01:46:04
 Re = 246.52 (224.75, -101.02, 7.40 GSE)



RAD2 Antenna Ey
 Mode LIN(1)
 SUM/SEP SEP
 Toggle OFF
 RAD1 Antenna Ex
 Mode LIS(2,4)
 SUM/SEP SUM
 Toggle OFF
 TNR Antenna ExEy
 Mode A-32
 Sweep ACE