

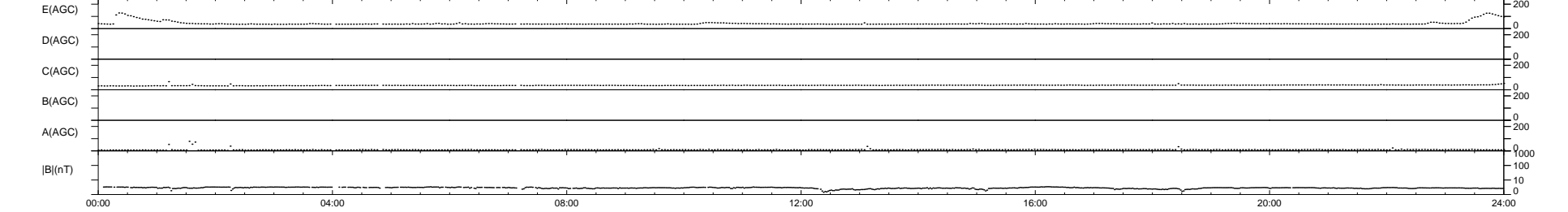
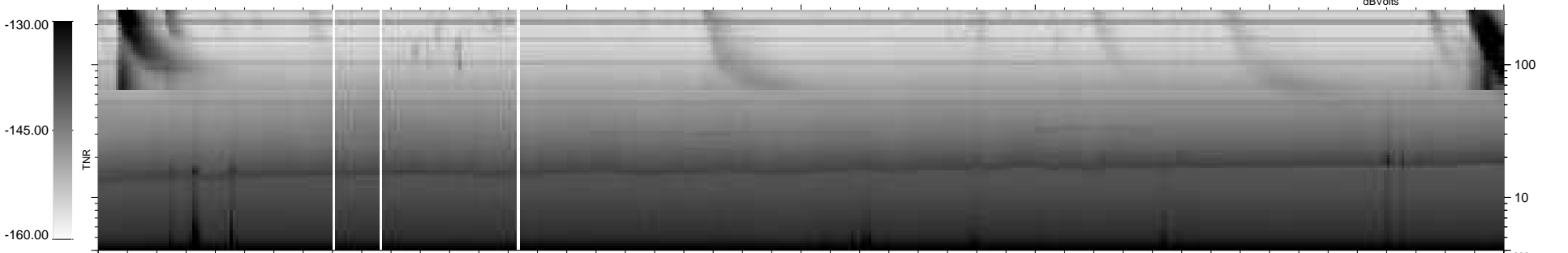
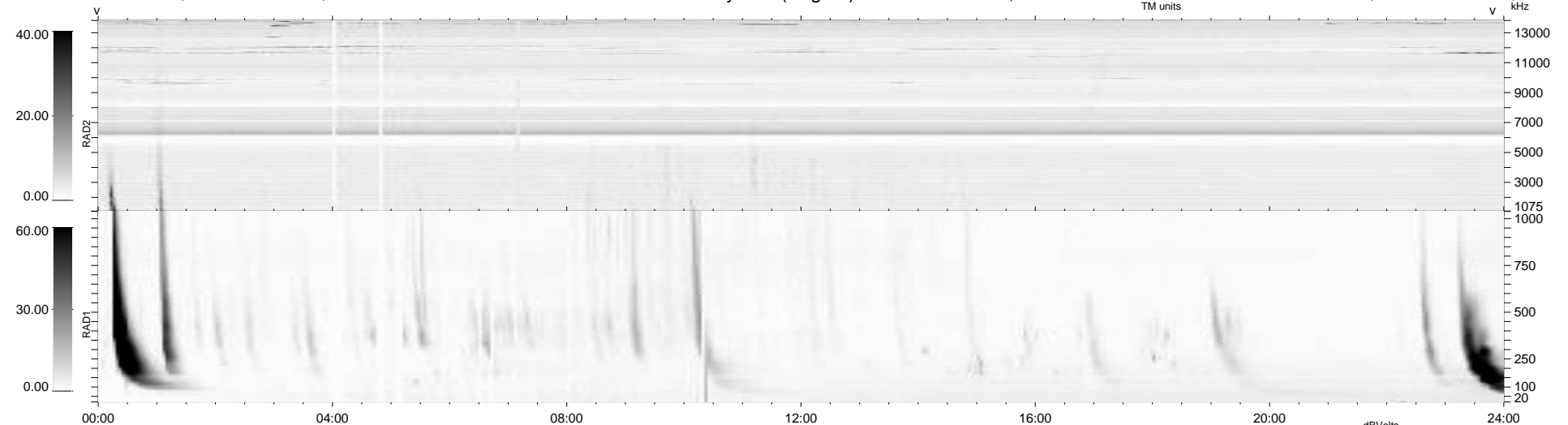
33 bad + 906 good MF/939MF projected (96%) - 0 missing MFs
 Avg interval = 180 secs
 Re = 250.26 (228.92, -100.64, 9.75 GSE)

windlib 2.0b

LZ version = v02

WIND/WAVES Summary Plot (Page 1) for 25-MAY-2014, DOY = 145

DAILY 2014-05-27 16:46:04
 Re = 249.42 (227.91, -100.92, 9.18 GSE)



RAD2
 Antenna Ey
 Mode LIN(1)
 SUM/SEP SEP
 Toggle OFF

RAD1
 Antenna
 Mode
 SUM/SEP
 Toggle

TNR
 Antenna ExEy
 Mode A-32
 Sweep ACE