

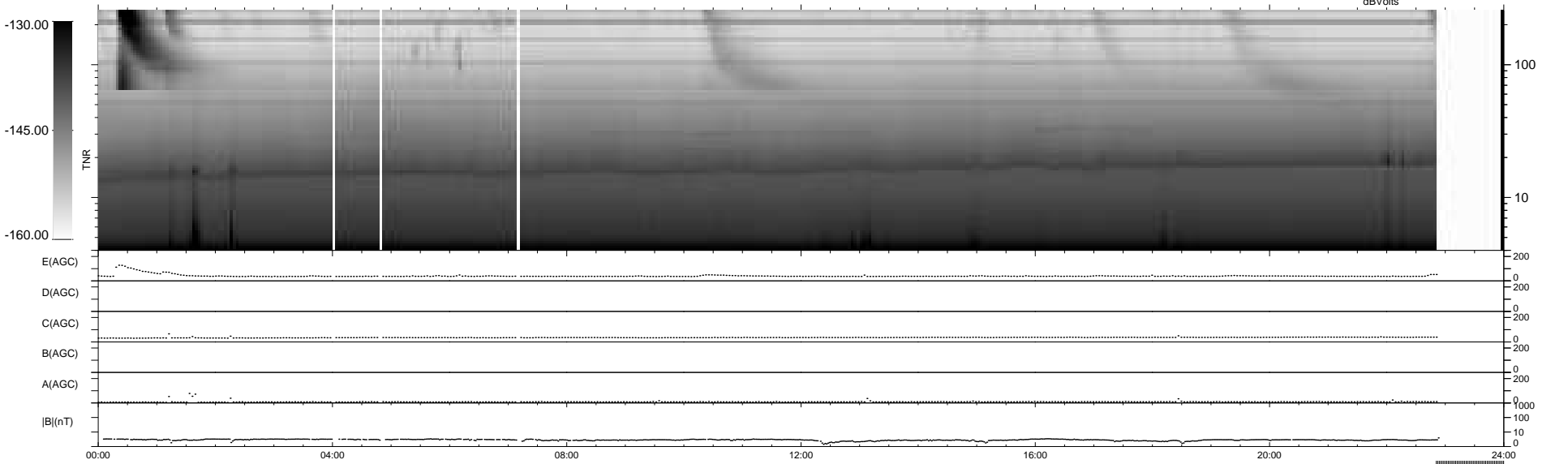
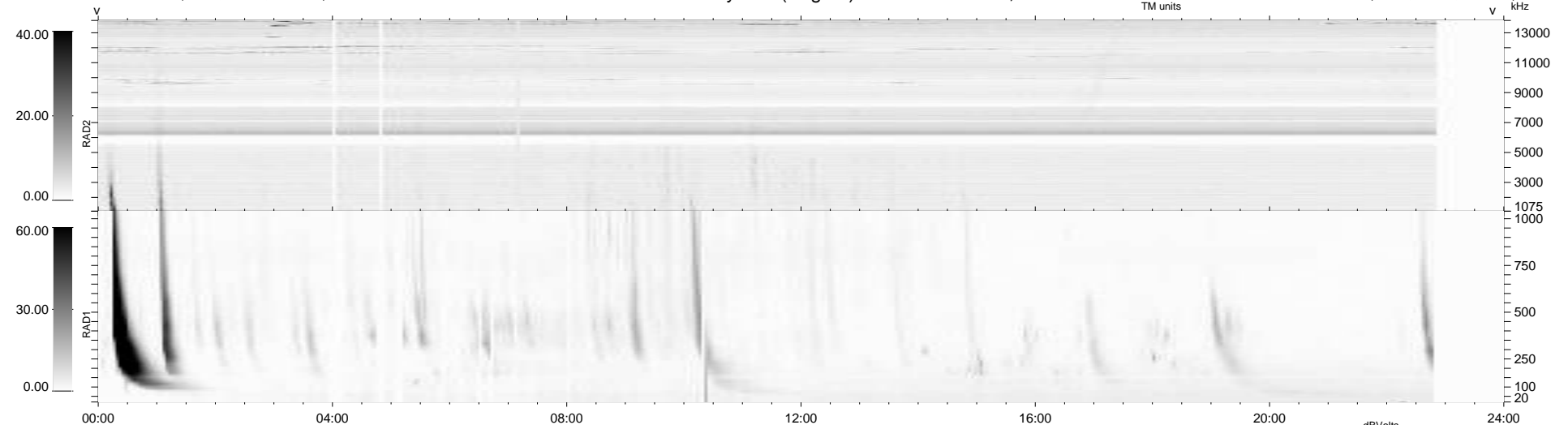
34 bad + 859 good MF/939MF projected (91%) - 46 missing MFs
 Avg interval = 180 secs
 Re = 250.26 (228.92, -100.64, 9.75 GSE)

windlib 2.0b

LZ version = v01

WIND/WAVES Summary Plot (Page 1) for 25-MAY-2014, DOY = 145

DAILY 2014-05-27 02:46:04
 Re = 249.42 (227.91, -100.92, 9.18 GSE)



RAD2
 Antenna Ey
 Mode LIN(1)
 SUM/SEP SEP
 Toggle OFF
 RAD1
 Antenna
 Mode
 SUM/SEP
 Toggle
 TNR
 Antenna ExEy
 Mode A-32
 Sweep ACE