

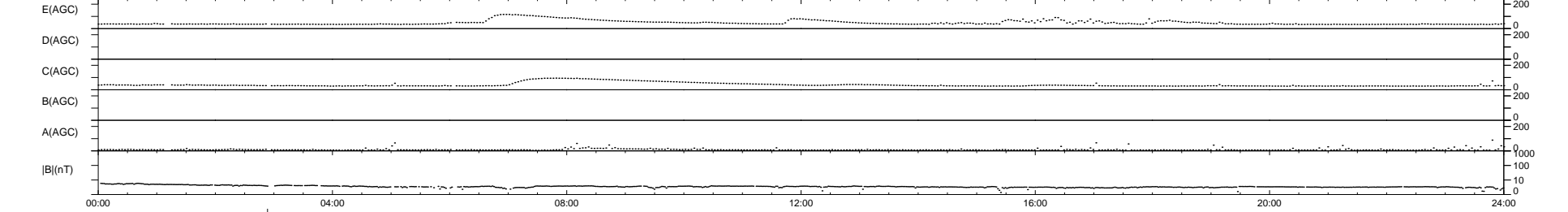
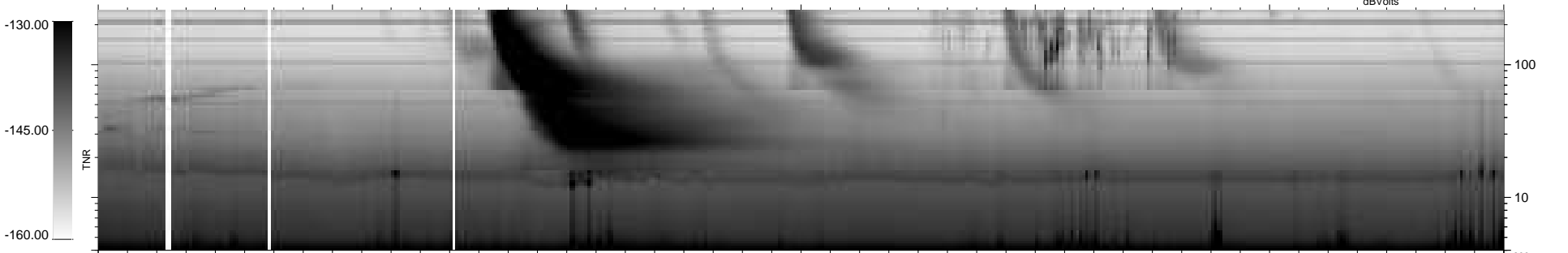
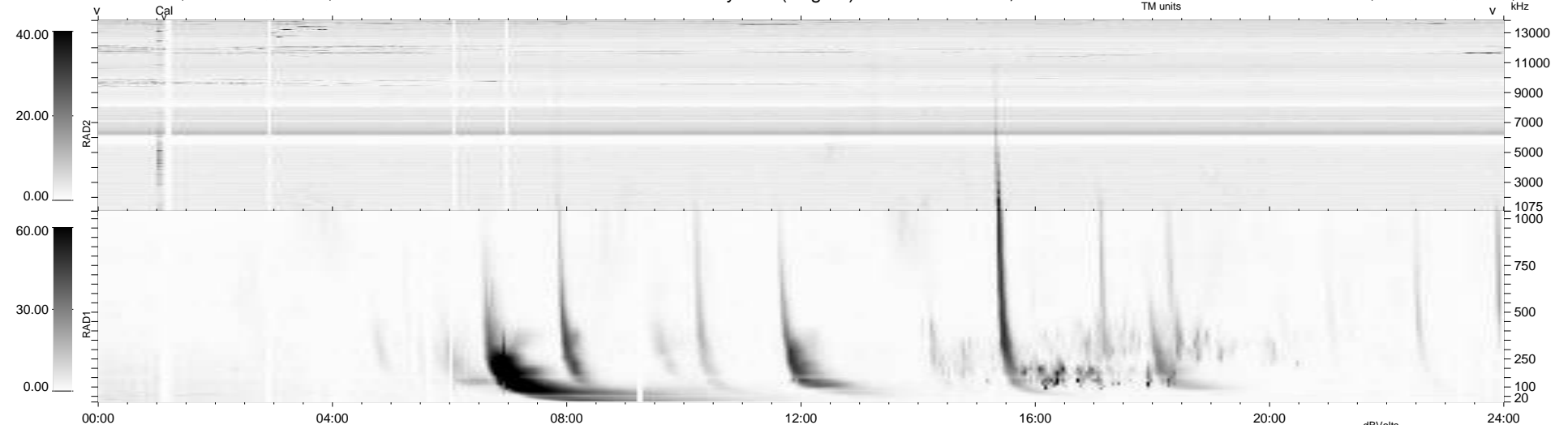
35 bad + 904 good MF/940MF projected (96%) - 1 missing MF
 Avg interval = 180 secs
 Re = - 251.03 (229.93, -100.21, 10.32 GSE)

windlib 2.0b

LZ version = v01

WIND/WAVES Summary Plot (Page 1) for 24-MAY-2014, DOY = 144

DAILY 2014-05-25 18:46:05
 Re = 250.26 (228.93, -100.63, 9.76 GSE)



```

RAD2
Antenna Ey .....
Mode LIN(1) .....
SUM/SEP SEP .....
Toggle OFF .....

RAD1
Antenna Ex .....
Mode LIS(2,4) .....
SUM/SEP SUM .....
Toggle OFF .....

TNR
Antenna ExEy .....
Mode A-32 .....
Sweep ACE .....
  
```