

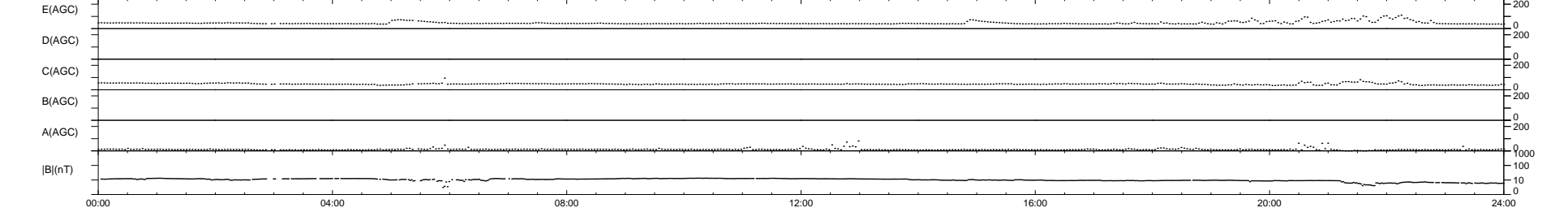
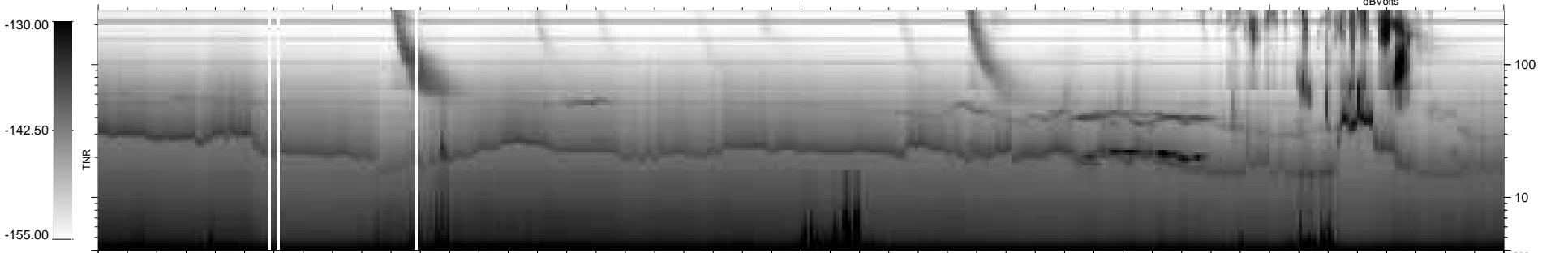
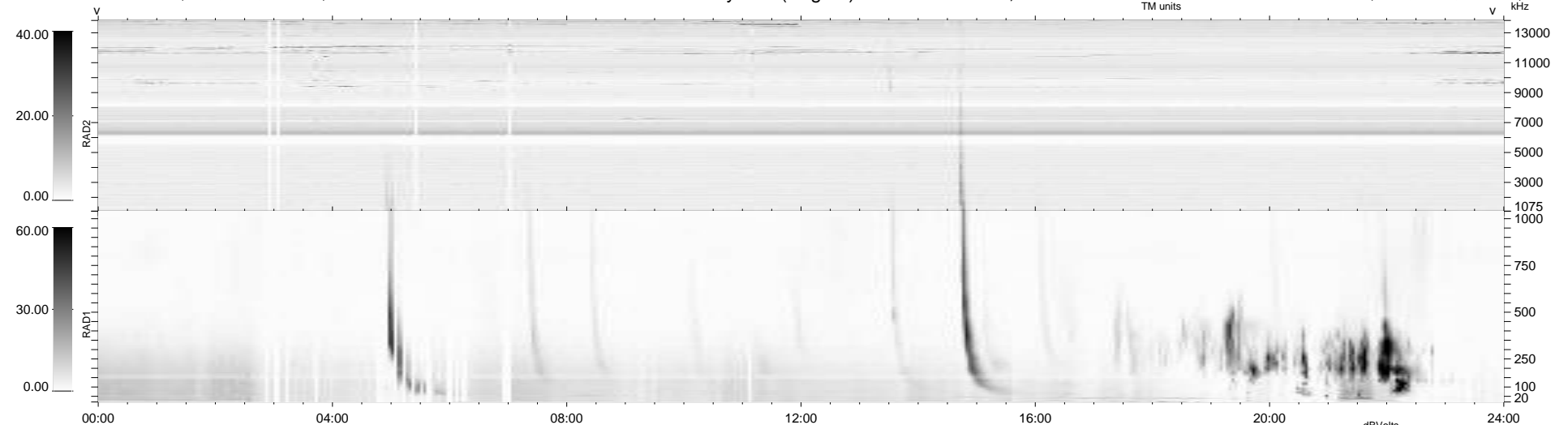
39 bad + 900 good MF/939MF projected (95%) - 0 missing MFs  
Avg interval = 180 secs  
Re = 251.74 (230.93, -99.63, 10.87 GSE)

windlib 2.0b

LZ version = v01

### WIND/WAVES Summary Plot (Page 1) for 23-MAY-2014, DOY = 143

DAILY 2014-05-24 18:46:07  
Re = 251.03 (229.94, -100.20, 10.32 GSE)



RAD2  
Antenna Ey  
Mode LIN(1)  
SUM/SEP SEP  
Toggle OFF

RAD1  
Antenna Ex  
Mode LIS(2,4)  
SUM/SEP SUM  
Toggle OFF

TNR  
Antenna ExEy  
Mode A-32  
Sweep ACE