

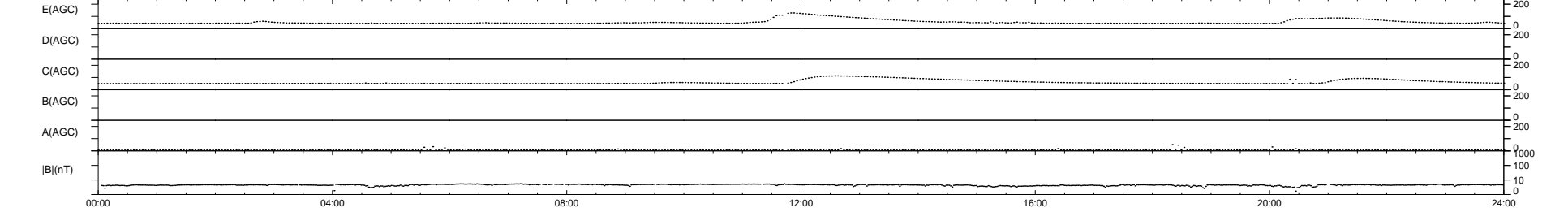
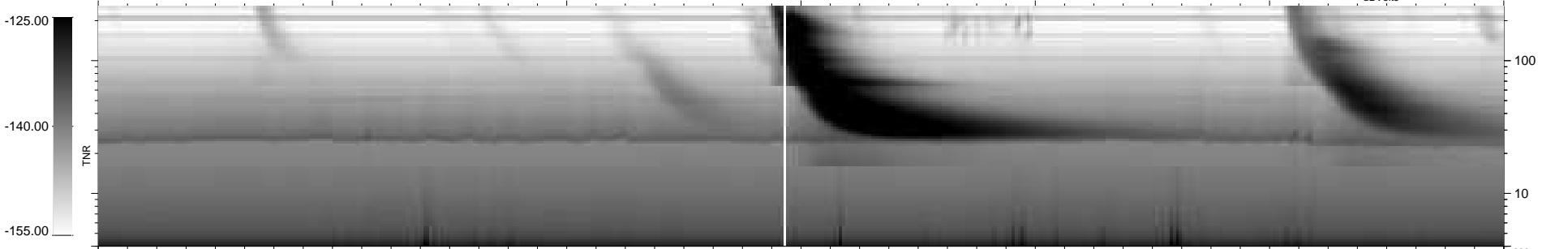
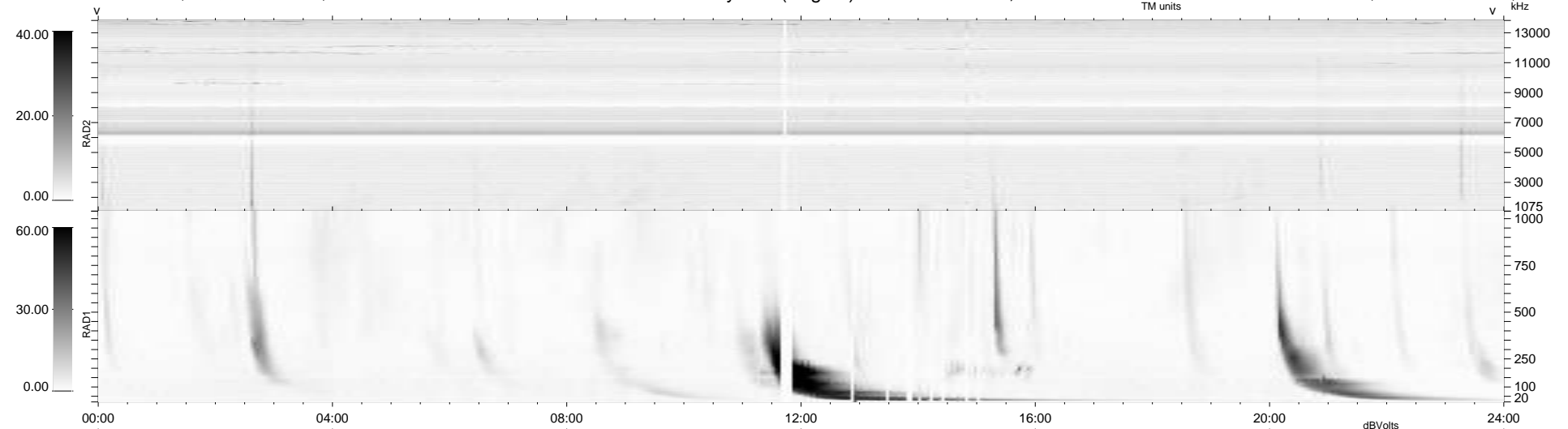
31 bad + 908 good MF/939MF projected (96%) - 0 missing MFs
 Avg interval = 180 secs
 Re = 254.07 (234.93, -95.87, 12.94 GSE)

windlib 2.0b

LZ version = v01

WIND/WAVES Summary Plot (Page 1) for 19-MAY-2014, DOY = 139

DAILY 2014-05-20 17:46:04
 Re = 253.55 (233.92, -97.02, 12.45 GSE)



```

RAD2
Antenna Ey .....
Mode LIN(1) .....
SUM/SEP SEP .....
Toggle OFF .....

RAD1
Antenna Ex .....
Mode LIS(2,4) .....
SUM/SEP SUM .....
Toggle OFF .....

TNR
Antenna ExEy .....
Mode A-32 .....
Sweep ACE .....
  
```