

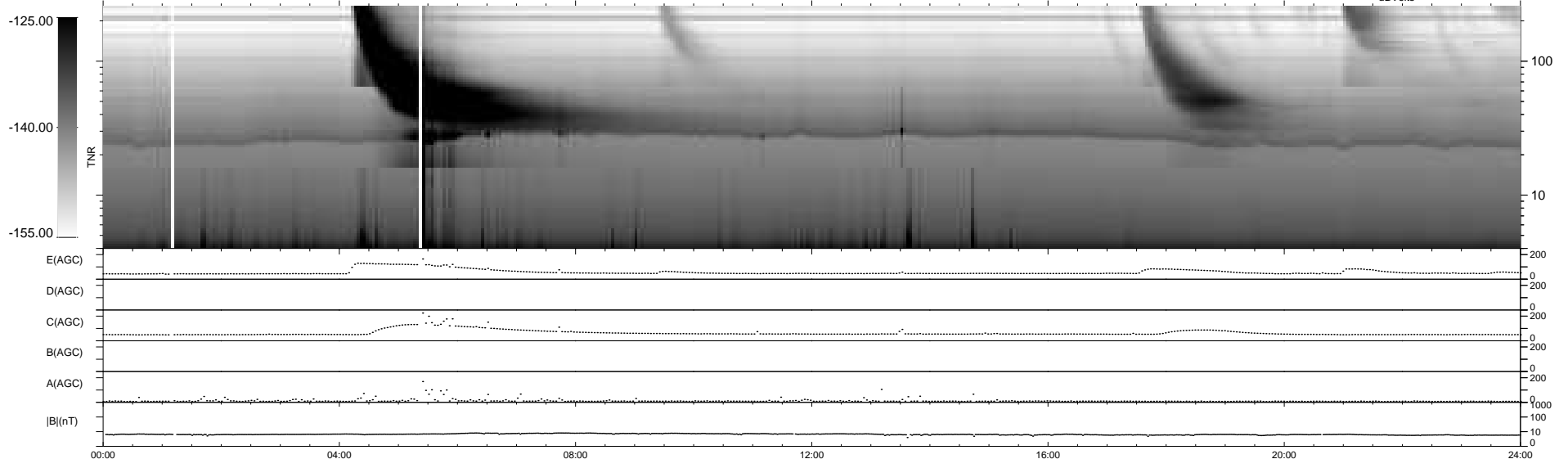
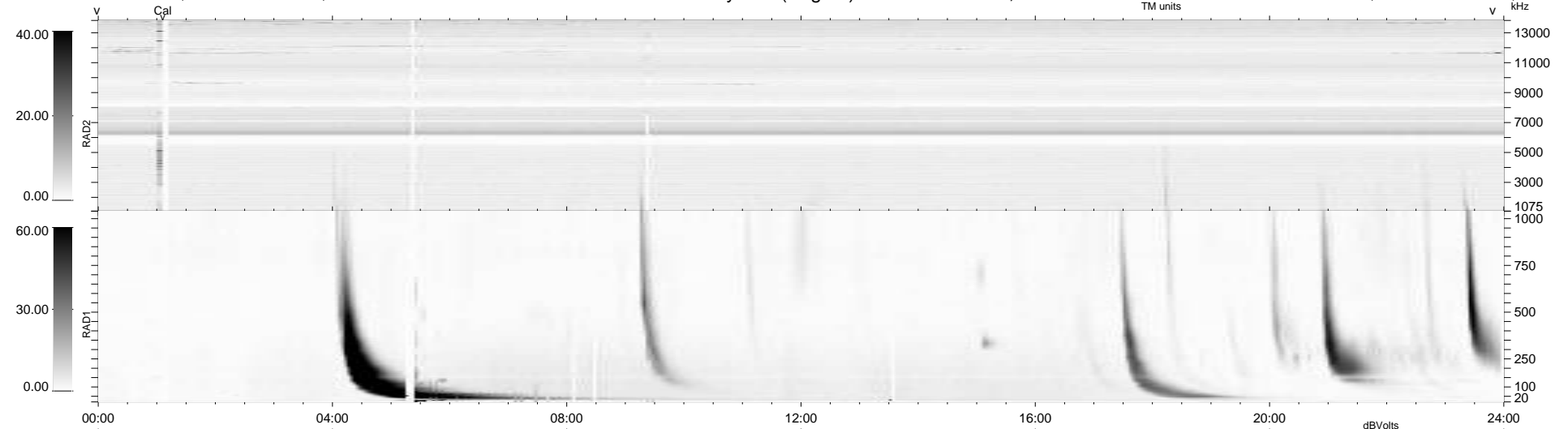
29 bad + 910 good MF/939MF projected (96%) - 0 missing MFs  
 Avg interval = 180 secs  
 Re = 255.51 (238.10, -91.59, 14.33 GSE)

windlib 2.0b

LZ version = v01

### WIND/WAVES Summary Plot (Page 1) for 16-MAY-2014, DOY = 136

DAILY 2014-05-17 17:46:05  
 Re = 255.04 (237.03, -93.14, 13.89 GSE)



RAD2 Antenna Ey .....  
 Mode LIN(1) .....  
 SUM/SEP SEP .....  
 Toggle OFF .....  
 RAD1 Antenna Ex .....  
 Mode LIS(2,4) .....  
 SUM/SEP SUM .....  
 Toggle OFF .....  
 TNR Antenna ExEy .....  
 Mode A-32 .....  
 Sweep ACE .....