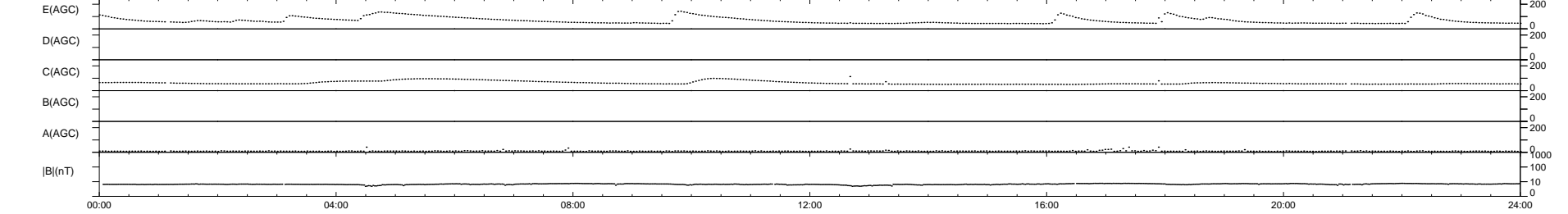
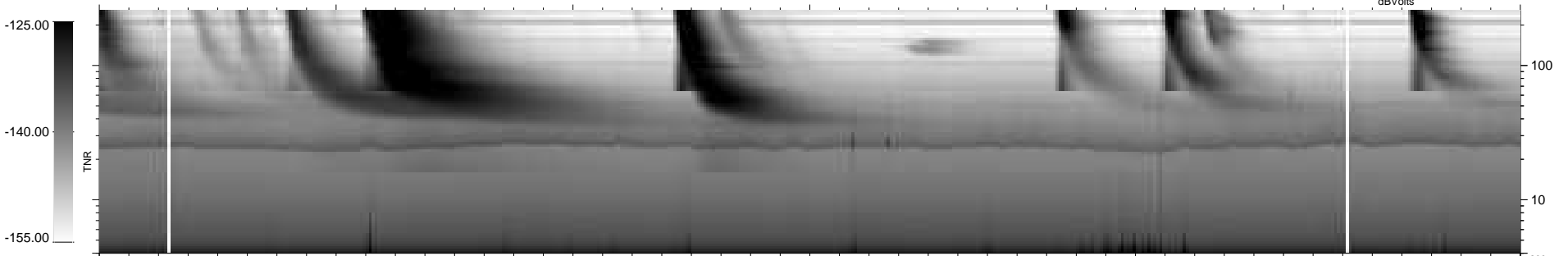
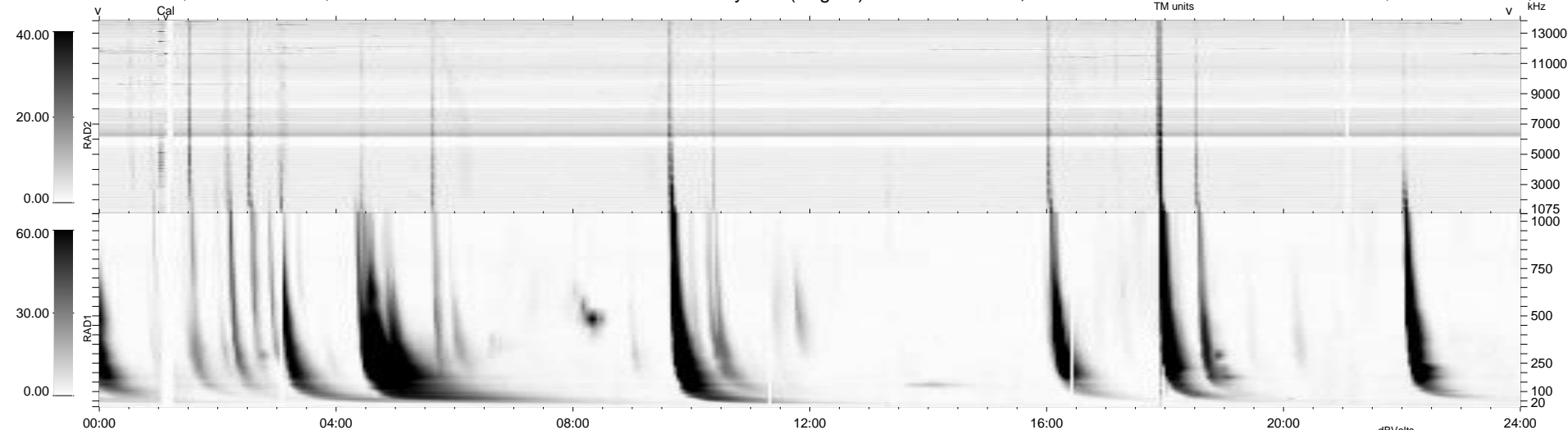


7 bad + 932 good MF/939MF projected (99%) - 0 missing MFs  
 Avg interval = 180 secs  
 Re = 258.38 (245.05, -80.20, 16.65 GSE)

windlib 2.0b LZ version = v01  
 DAILY 2014-05-11 17:46:03  
 Re = 257.89 (243.87, -82.29, 16.31 GSE)

### WIND/WAVES Summary Plot (Page 1) for 10-MAY-2014, DOY = 130



RAD2  
 Antenna Ey .....  
 Mode LIN(1) .....  
 SUM/SEP SEP .....  
 Toggle OFF .....  
 RAD1  
 Antenna Ex .....  
 Mode LIS(2,4) .....  
 SUM/SEP SUM .....  
 Toggle OFF .....  
 TNR  
 Antenna ExEy .....  
 Mode A-32 .....  
 Sweep ACE .....