

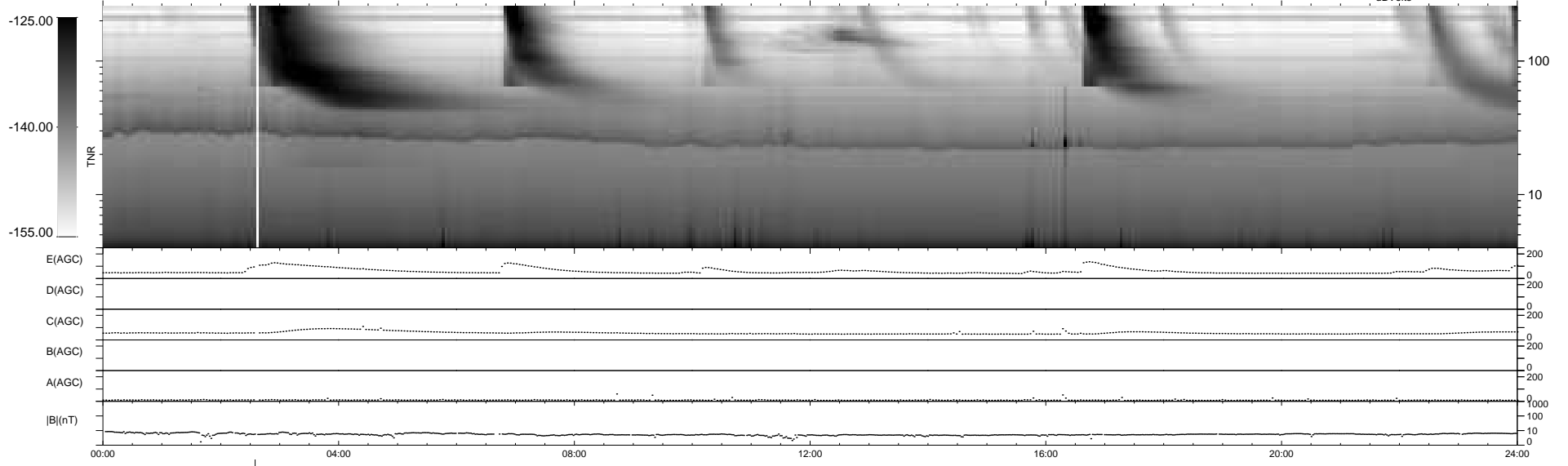
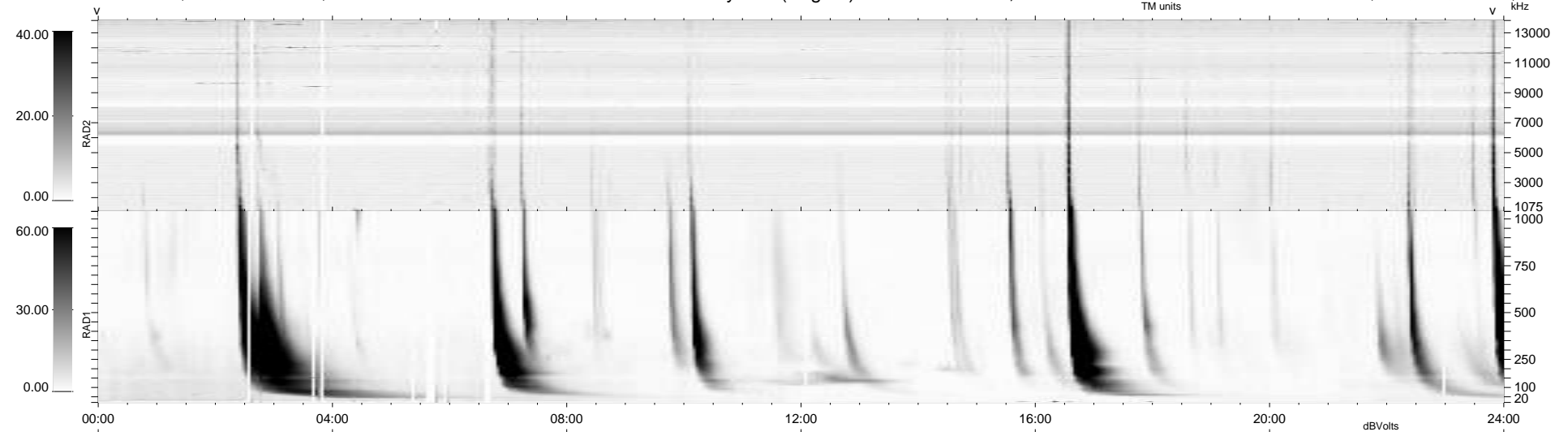
29 bad + 910 good MF/940MF projected (96%) - 1 missing MF
 Avg interval = 180 secs
 Re = 258.86 (246.23, -78.03, 16.99 GSE)

windlib 2.0b

LZ version = v01

WIND/WAVES Summary Plot (Page 1) for 09-MAY-2014, DOY = 129

DAILY 2014-05-10 18:46:04
 Re = 258.38 (245.06, -80.18, 16.66 GSE)



```

RAD2
Antenna Ey .....
Mode LIN(1) .....
SUM/SEP SEP .....
Toggle OFF .....

RAD1
Antenna Ex .....
Mode LIS(2,4) .....
SUM/SEP SUM .....
Toggle OFF .....

TNR
Antenna ExEy .....
Mode A-32 .....
Sweep ACE .....
  
```