

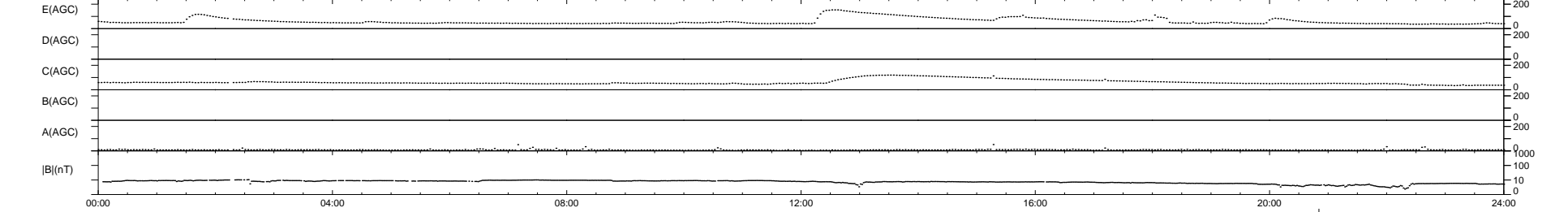
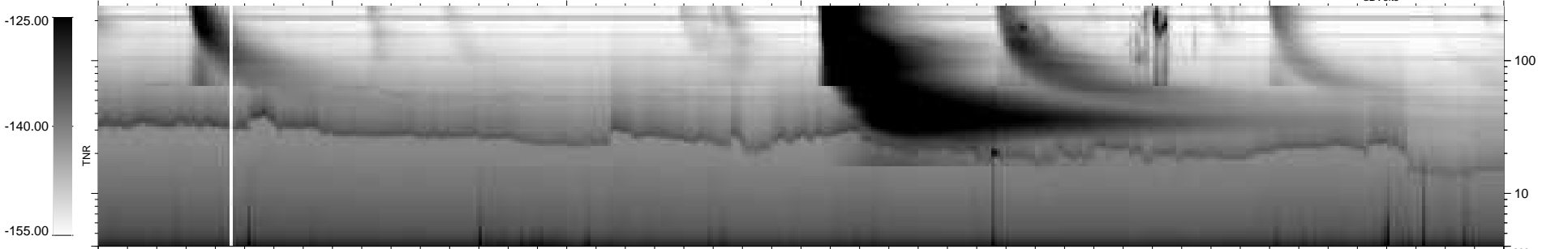
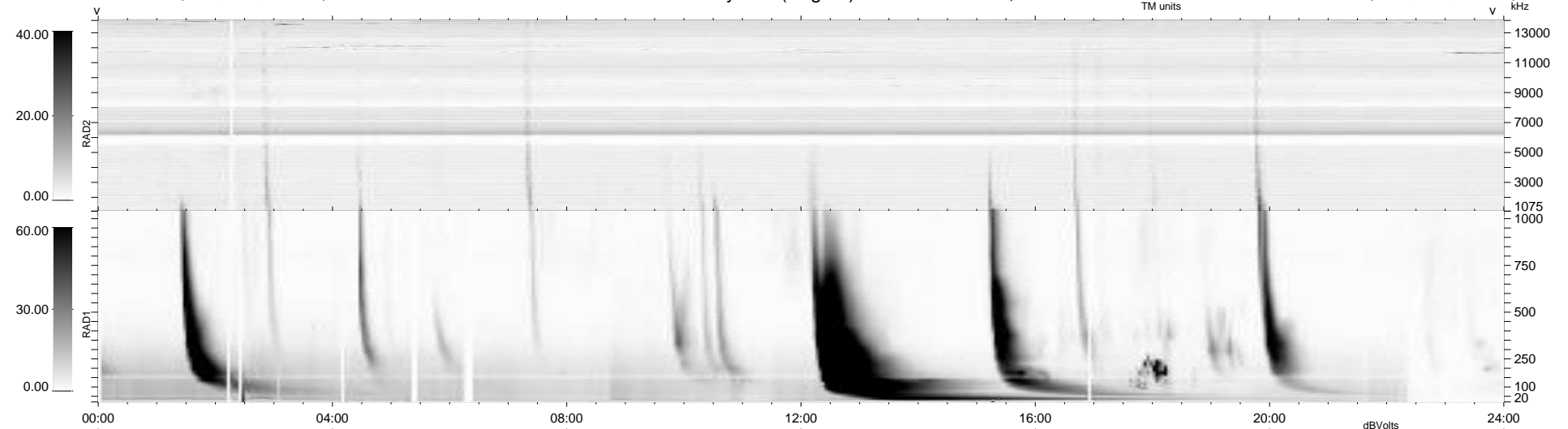
22 bad + 916 good MF/939MF projected (97%) - 1 missing MF
 Avg interval = 180 secs
 Re = 260.50 (250.61, -68.72, 18.20 GSE)

windlib 2.0b

LZ version = v01

WIND/WAVES Summary Plot (Page 1) for 05-MAY-2014, DOY = 125

DAILY 2014-05-06 17:46:03
 Re = 260.06 (249.51, -71.10, 17.92 GSE)



RAD2
 Antenna Ey
 Mode LIN(1)
 SUM/SEP SEP
 Toggle OFF
 RAD1
 Antenna
 Mode
 SUM/SEP
 Toggle
 TNR
 Antenna ExEy
 Mode A-32
 Sweep ACE