

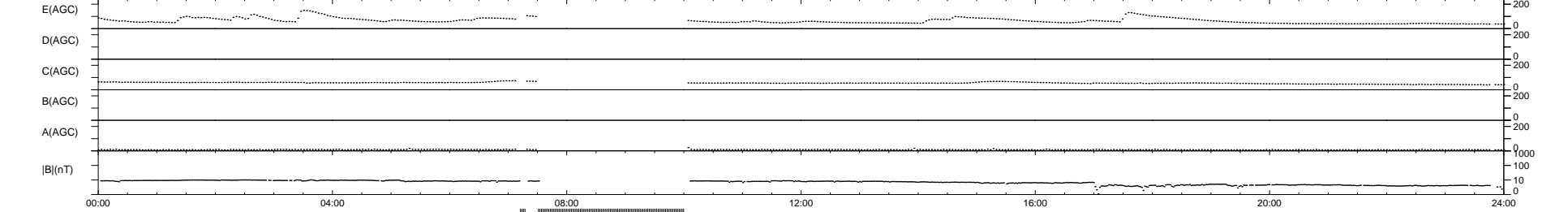
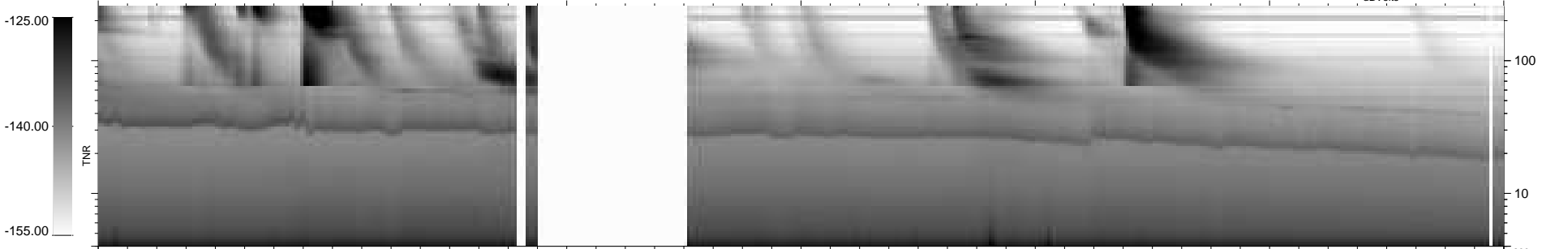
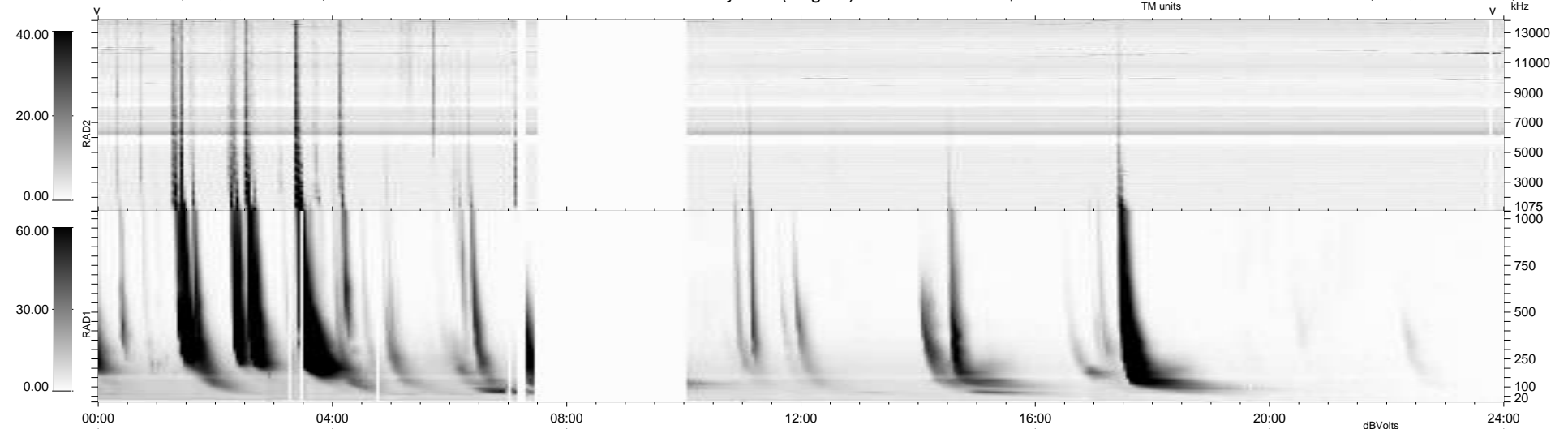
30 bad + 808 good MF/940MF projected (85%) - 102 missing MFs
 Avg interval = 180 secs
 Re = 261.91 (254.54, -58.61, 19.17 GSE)

windlib 2.0b

LZ version = v01

WIND/WAVES Summary Plot (Page 1) for 01-MAY-2014, DOY = 121

DAILY 2014-05-02 20:46:04
 Re = 261.62 (253.65, -61.20, 18.95 GSE)



RAD2
 Antenna Ey
 Mode LIN(1)
 SUM/SEP SEP
 Toggle OFF

RAD1
 Antenna Ex
 Mode LIS(2,4)
 SUM/SEP SUM
 Toggle OFF

TNR
 Antenna ExEy
 Mode A-32
 Sweep ACE