

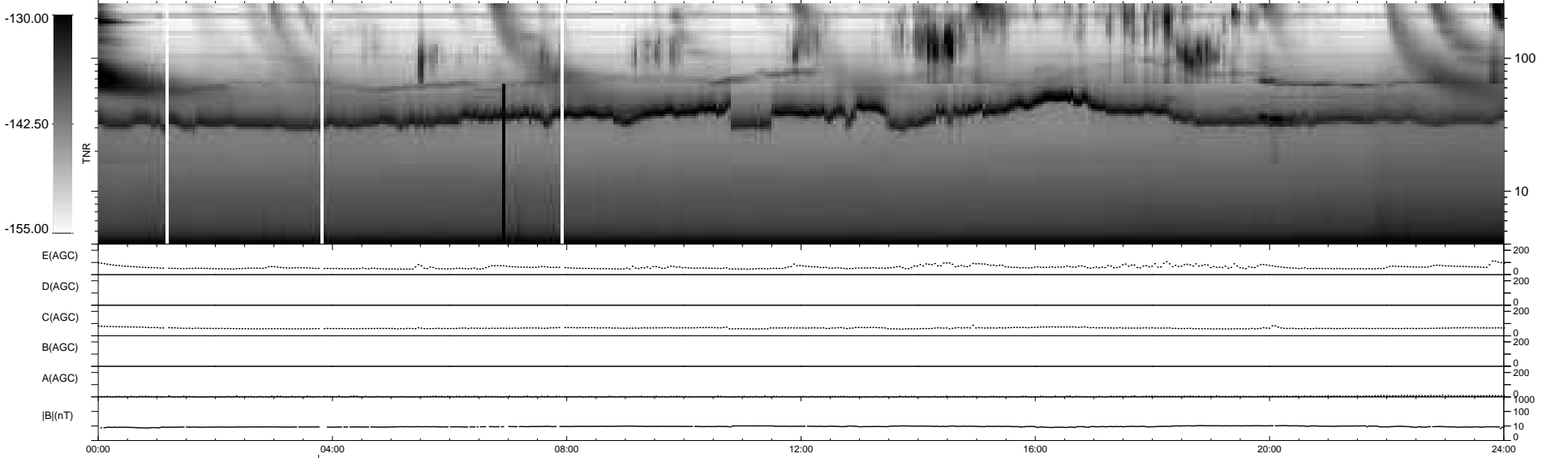
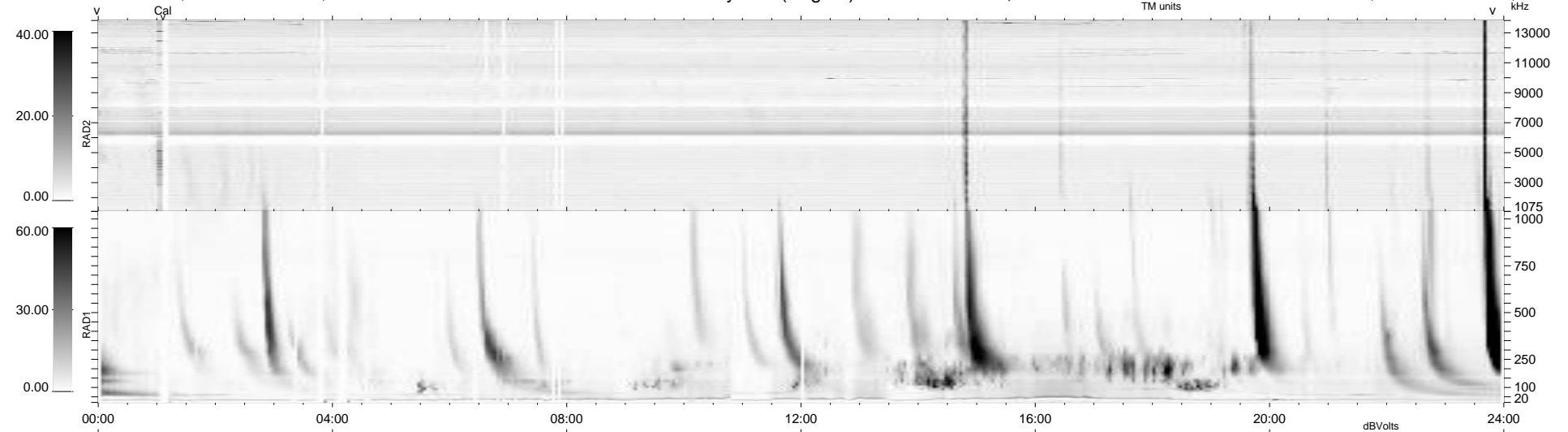
30 bad + 908 good MF/939MF projected (96%) - 1 missing MF
 Avg interval = 180 secs
 Re = 262.15 (255.38, -55.95, 19.38 GSE)

windlib 2.0b

LZ version = v01

WIND/WAVES Summary Plot (Page 1) for 30-APR-2014, DOY = 120

DAILY 2014-05-01 12:46:04
 Re = 261.91 (254.55, -58.59, 19.18 GSE)



RAD2 Antenna Ey
 Mode LIN(1)
 SUM/SEP SEP
 Toggle OFF
 RAD1 Antenna
 Mode
 SUM/SEP
 Toggle
 TNR Antenna ExEy
 Mode A-32
 Sweep ACE