

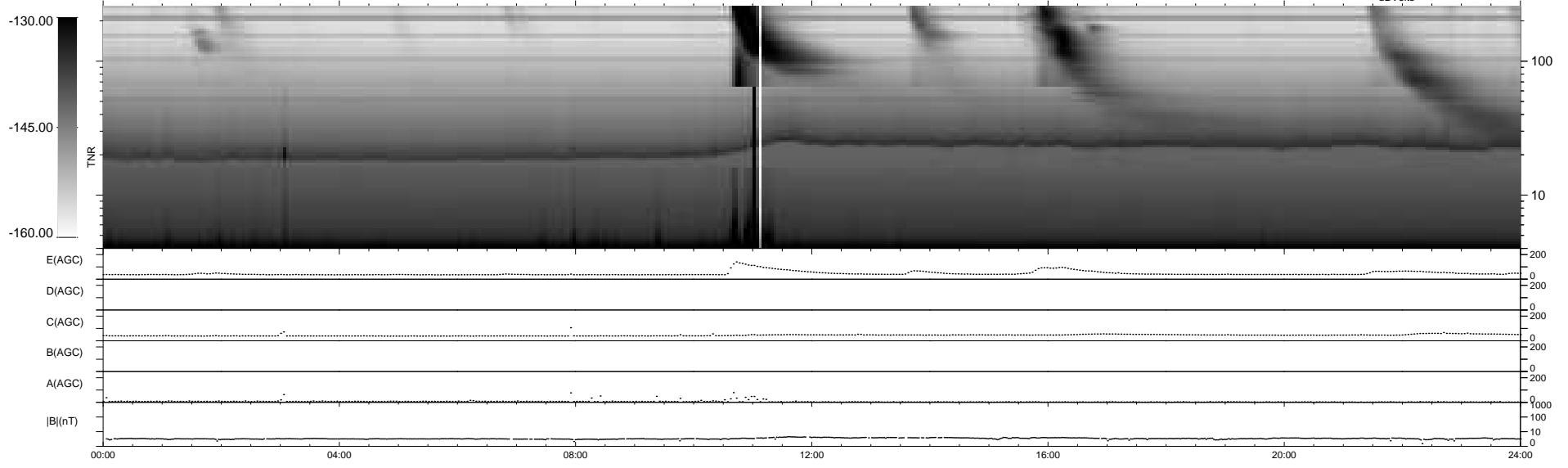
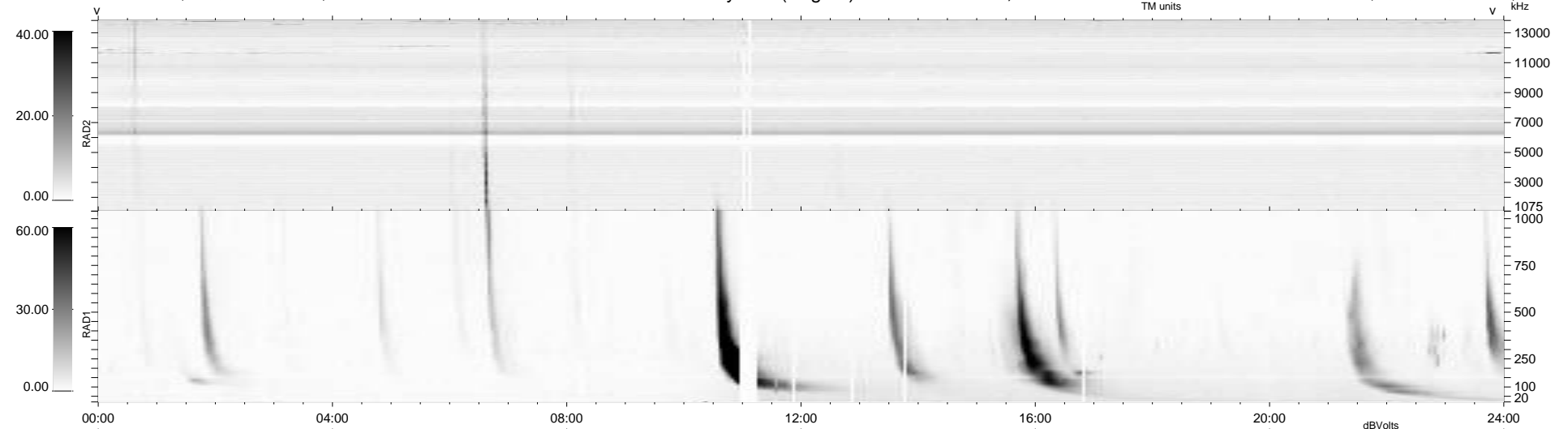
28 bad + 911 good MF/939MF projected (97%) - 0 missing MFs
 Avg interval = 180 secs
 Re = 262.55 (257.44, -47.57, 19.89 GSE)

windlib 2.0b

LZ version = v01

WIND/WAVES Summary Plot (Page 1) for 27-APR-2014, DOY = 117

DAILY 2014-04-28 20:46:04
 Re = 262.47 (256.83, -50.41, 19.74 GSE)



RAD2
 Antenna Ey
 Mode LIN(1)
 SUM/SEP SEP
 Toggle OFF

RAD1
 Antenna Ex
 Mode LIS(2,4)
 SUM/SEP SUM
 Toggle OFF

TNR
 Antenna ExEy
 Mode A-32
 Sweep ACE