

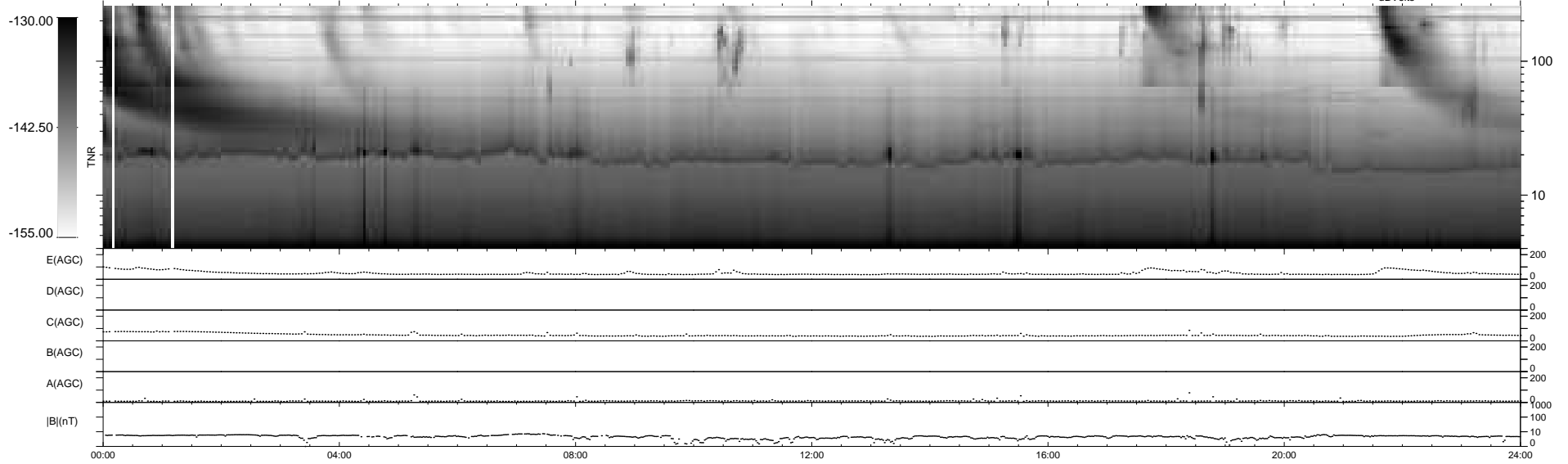
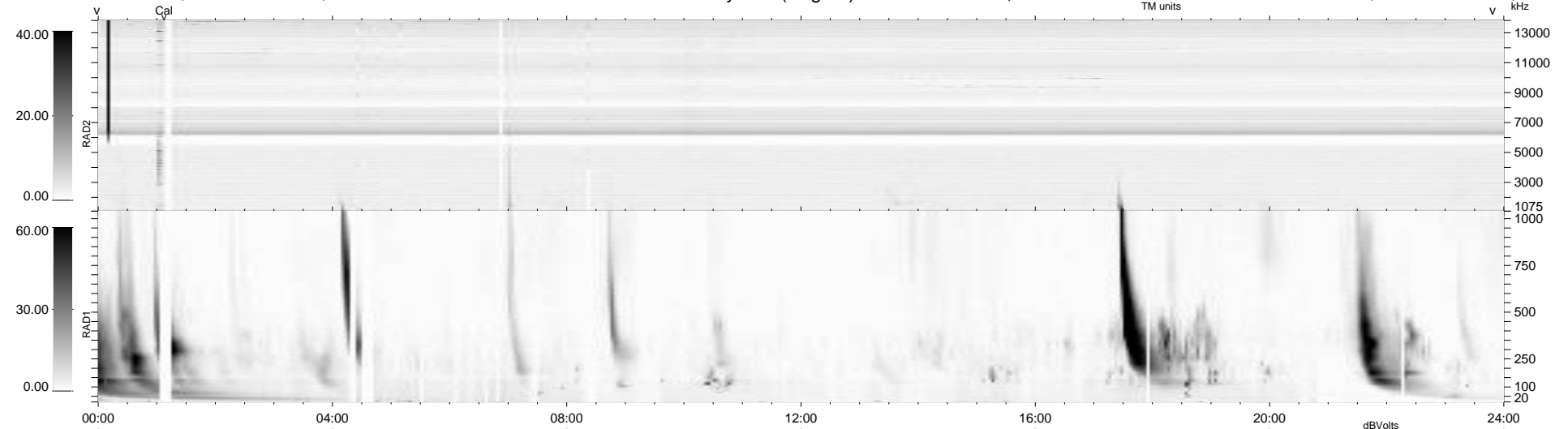
35 bad + 905 good MF/940MF projected (96%) - 0 missing MFs  
 Avg interval = 180 secs  
 Re = 262.48 (258.84, -38.55, 20.22 GSE)

windlib 2.0b

LZ version = v01

### WIND/WAVES Summary Plot (Page 1) for 24-APR-2014, DOY = 114

DAILY 2014-04-26 03:46:04  
 Re = 262.54 (258.44, -41.61, 20.13 GSE)



RAD2  
 Antenna Ey  
 Mode LIN(1)  
 SUM/SEP SEP  
 Toggle OFF

RAD1  
 Antenna Ex  
 Mode LIS(2,4)  
 SUM/SEP SUM  
 Toggle OFF

TNR  
 Antenna ExEy  
 Mode A-32  
 Sweep ACE