

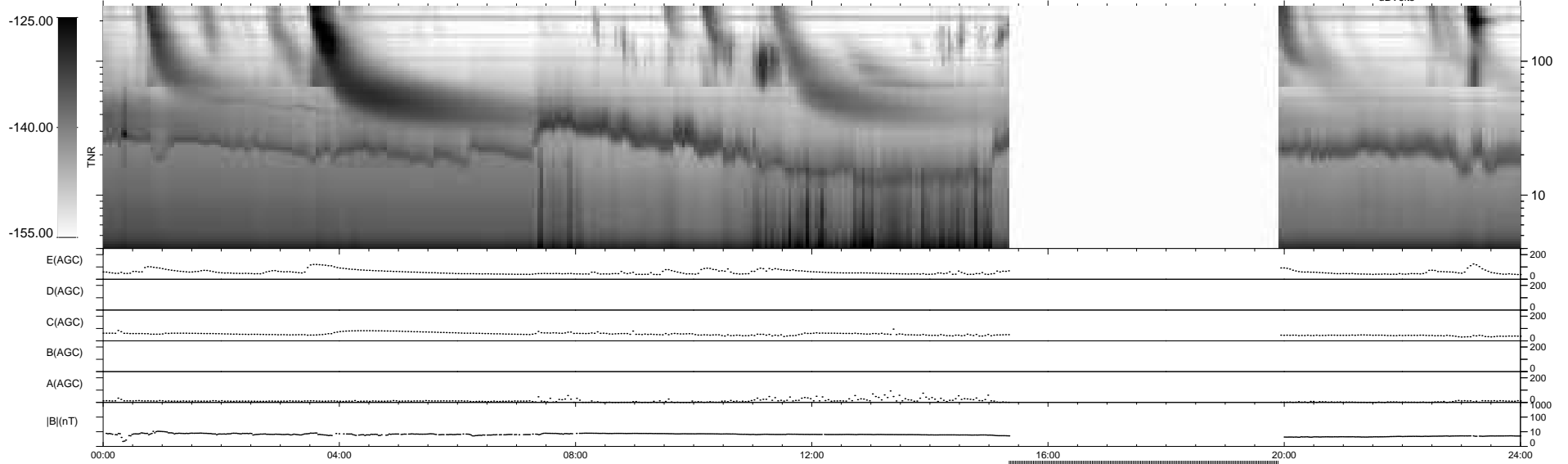
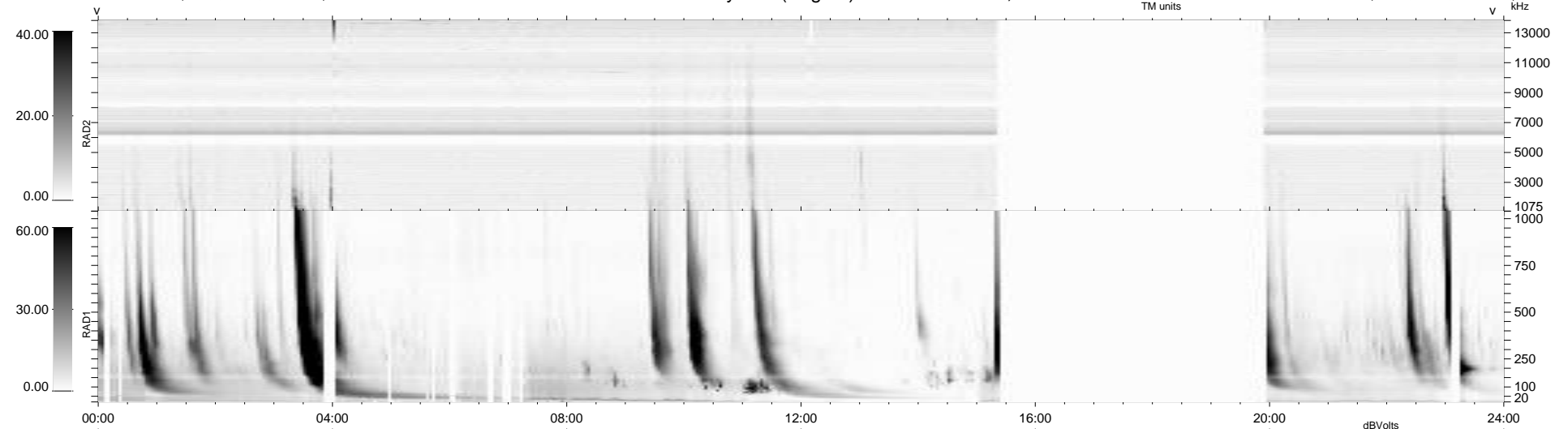
35 bad + 725 good MF/939MF projected (77%) - 179 missing MFs
 Avg interval = 180 secs
 Re = 262.10 (259.71, -28.84, 20.34 GSE)

windlib 2.0b

LZ version = v01

WIND/WAVES Summary Plot (Page 1) for 21-APR-2014, DOY = 111

DAILY 2014-04-23 01:46:02
 Re = 262.24 (259.47, -32.13, 20.32 GSE)



RAD2
 Antenna Ey
 Mode LIN(1)
 SUM/SEP SEP
 Toggle OFF

RAD1
 Antenna Ex
 Mode LIS(2/4)
 SUM/SEP SUM
 Toggle OFF

TNR
 Antenna ExEy
 Mode A-32
 Sweep ACE