

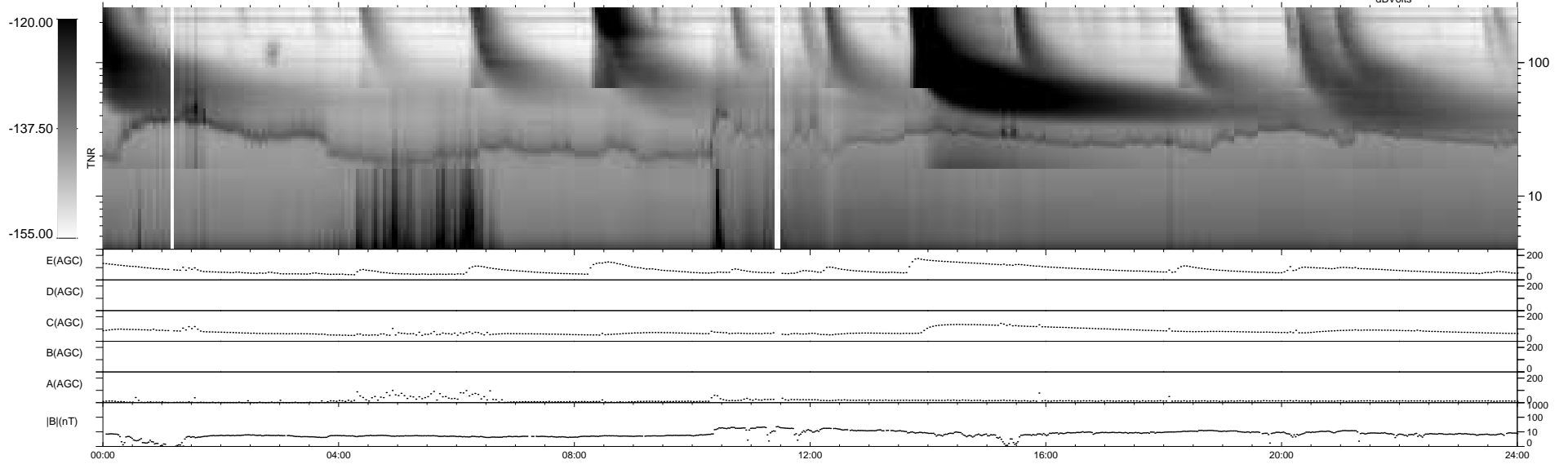
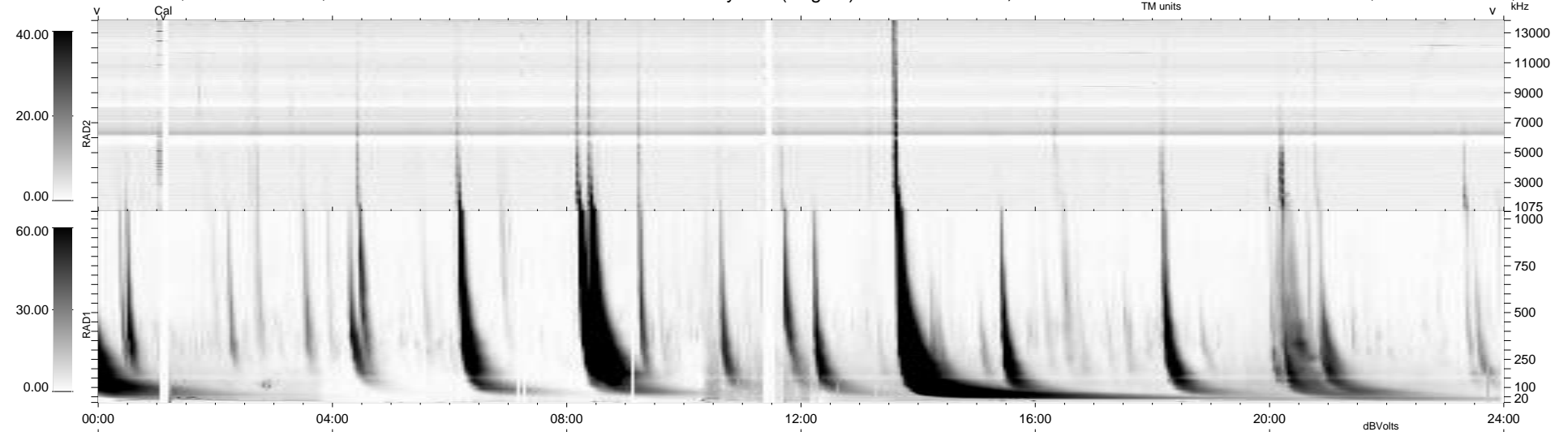
21 bad + 918 good MF/939MF projected (97%) - 0 missing MFs
 Avg interval = 180 secs
 Re = -261.95 (259.91, -25.46, 20.34 GSE)

windlib 2.0b

LZ version = v01

WIND/WAVES Summary Plot (Page 1) for 20-APR-2014, DOY = 110

DAILY 2014-04-21 17:46:03
 Re = 262.10 (259.71, -28.82, 20.34 GSE)



RAD2
 Antenna Ey
 Mode LIN(1)
 SUM/SEP SEP
 Toggle OFF

RAD1
 Antenna Ex
 Mode LIS(2,4)
 SUM/SEP SUM
 Toggle OFF

TNR
 Antenna ExEy
 Mode A-32
 Sweep ACE