

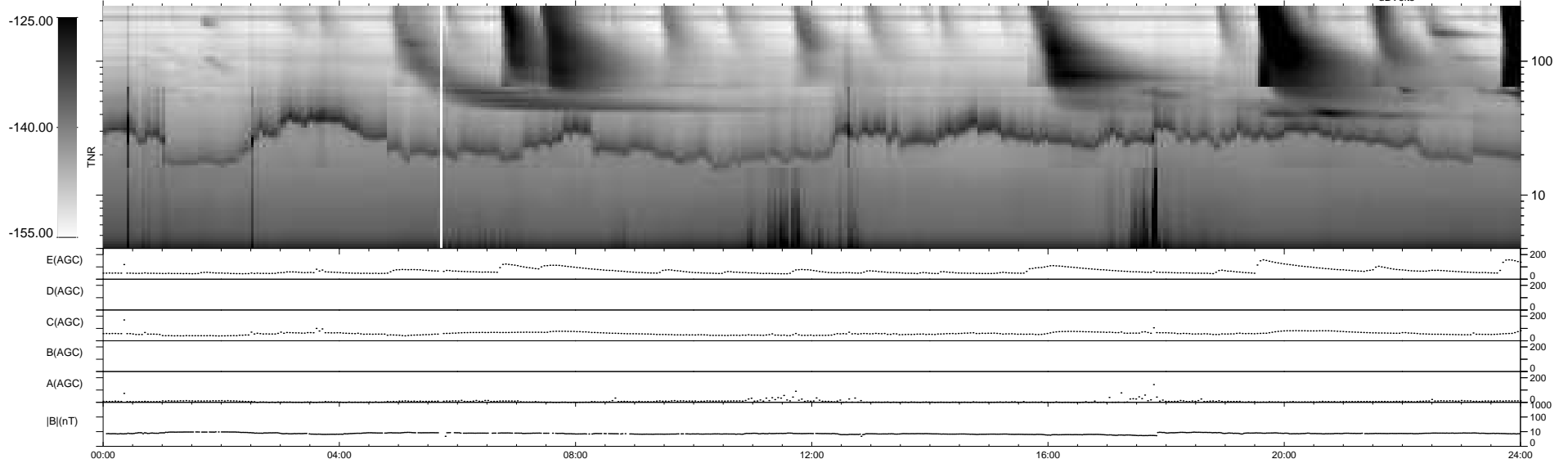
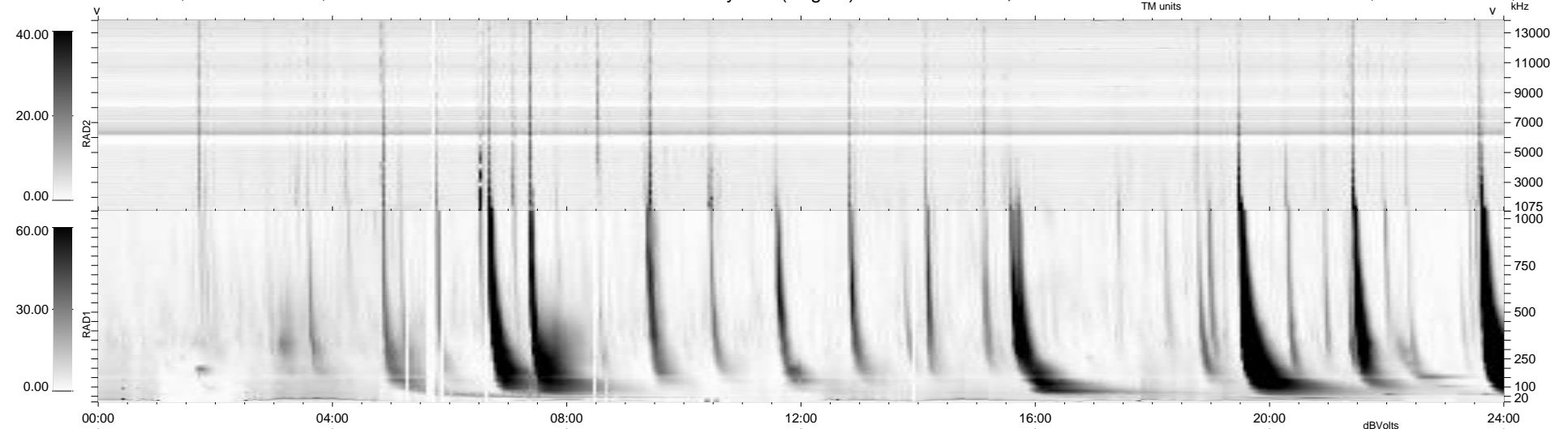
37 bad + 902 good MF/939MF projected (96%) - 0 missing MFs  
 Avg interval = 180 secs  
 Re = 261.80 (260.08, -22.02, 20.31 GSE)

windlib 2.0b

LZ version = v01

### WIND/WAVES Summary Plot (Page 1) for 19-APR-2014, DOY = 109

DAILY 2014-04-20 17:46:04  
 Re = 261.95 (259.91, -25.44, 20.34 GSE)



```

RAD2
Antenna Ey .....
Mode LIN(1) .....
SUM/SEP SEP .....
Toggle OFF .....

RAD1
Antenna Ex .....
Mode LIS(2,4) .....
SUM/SEP SUM .....
Toggle OFF .....

TNR
Antenna ExEy .....
Mode A-32 .....
Sweep ACE .....
  
```