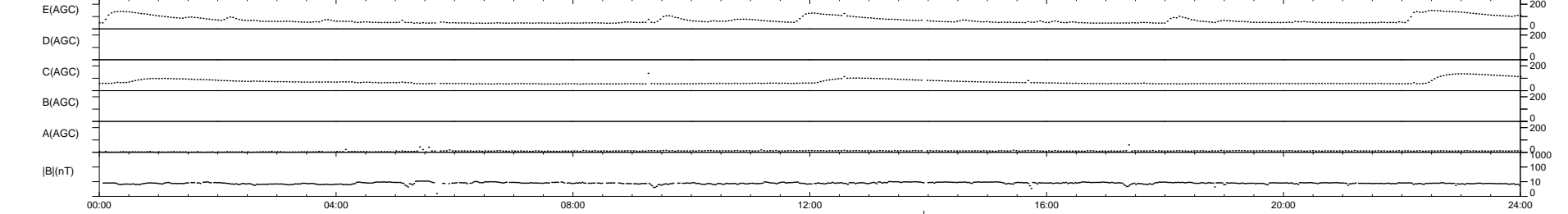
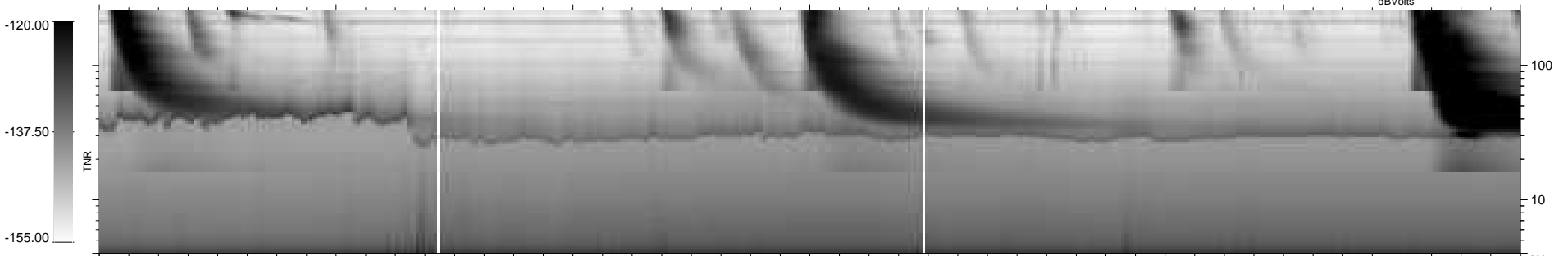
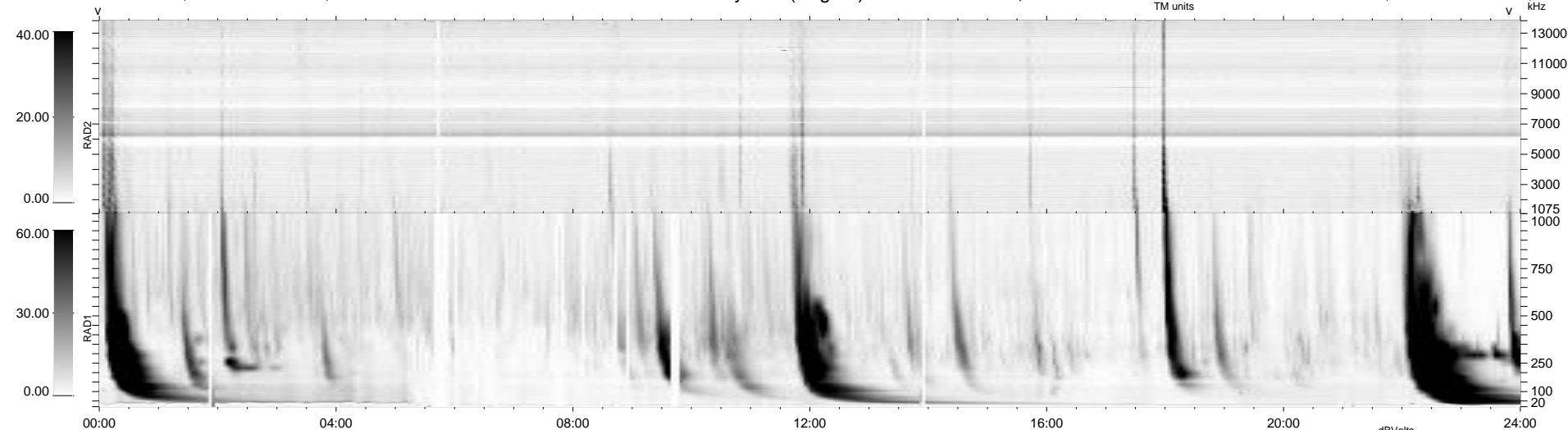


33 bad + 905 good MF/939MF projected (96%) - 1 missing MF  
 Avg interval = 180 secs  
 Re = 261.55 (260.34, -15.00, 20.20 GSE)

windlib 2.0b LZ version = v01  
 DAILY 2014-04-18 19:46:03  
 Re = 261.67 (260.22, -18.51, 20.26 GSE)

### WIND/WAVES Summary Plot (Page 1) for 17-APR-2014, DOY = 107



RAD2  
 Antenna Ey  
 Mode LIN(1)  
 SUM/SEP SEP  
 Toggle OFF

RAD1  
 Antenna Ex  
 Mode LIS(2,4)  
 SUM/SEP SUM  
 Toggle OFF

TNR  
 Antenna ExEy  
 Mode A-32  
 Sweep ACE