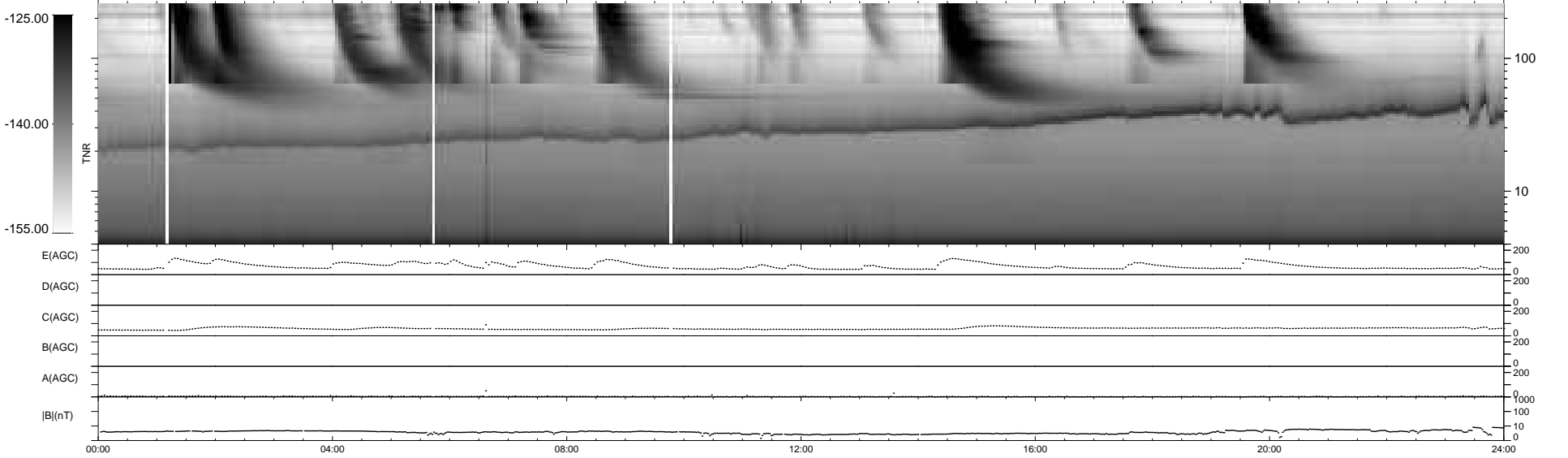
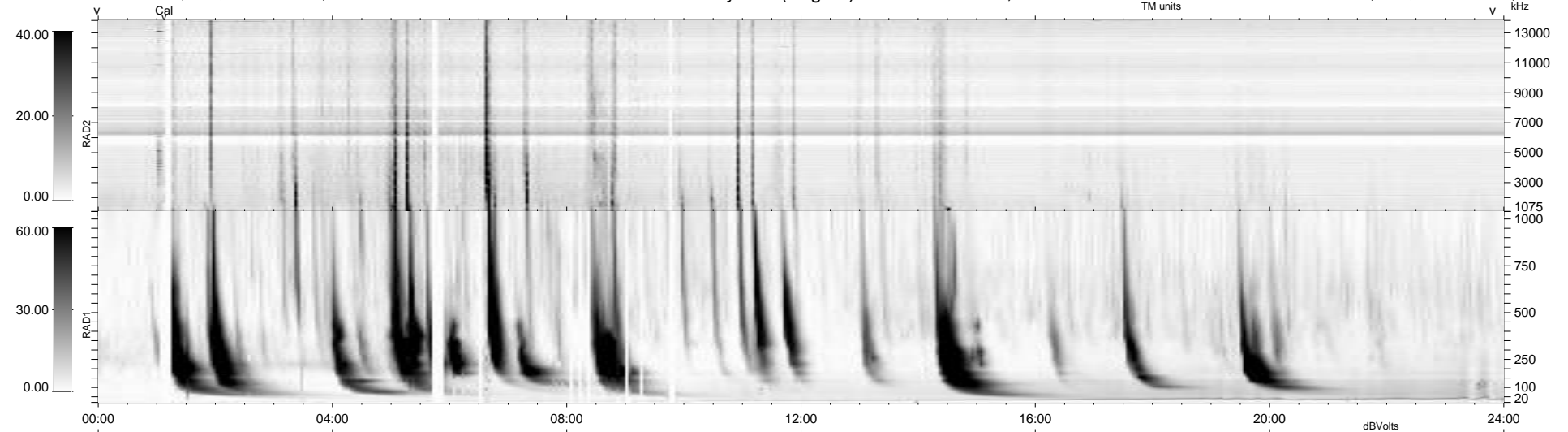


33 bad + 907 good MF/940MF projected (96%) - 0 missing MFs
 Avg interval = 180 secs
 Re = 261.46 (260.44, -11.44, 20.11 GSE)

windlib 2.0b LZ version = v01
 DAILY 2014-04-18 11:46:03
 Re = 261.55 (260.34, -14.98, 20.19 GSE)

WIND/WAVES Summary Plot (Page 1) for 16-APR-2014, DOY = 106



RAD2
 Antenna Ey
 Mode LIN(1)
 SUM/SEP SEP
 Toggle OFF

RAD1
 Antenna Ex
 Mode LIS(2,4)
 SUM/SEP SUM
 Toggle OFF

TNR
 Antenna ExEy
 Mode A-32
 Sweep ACE