

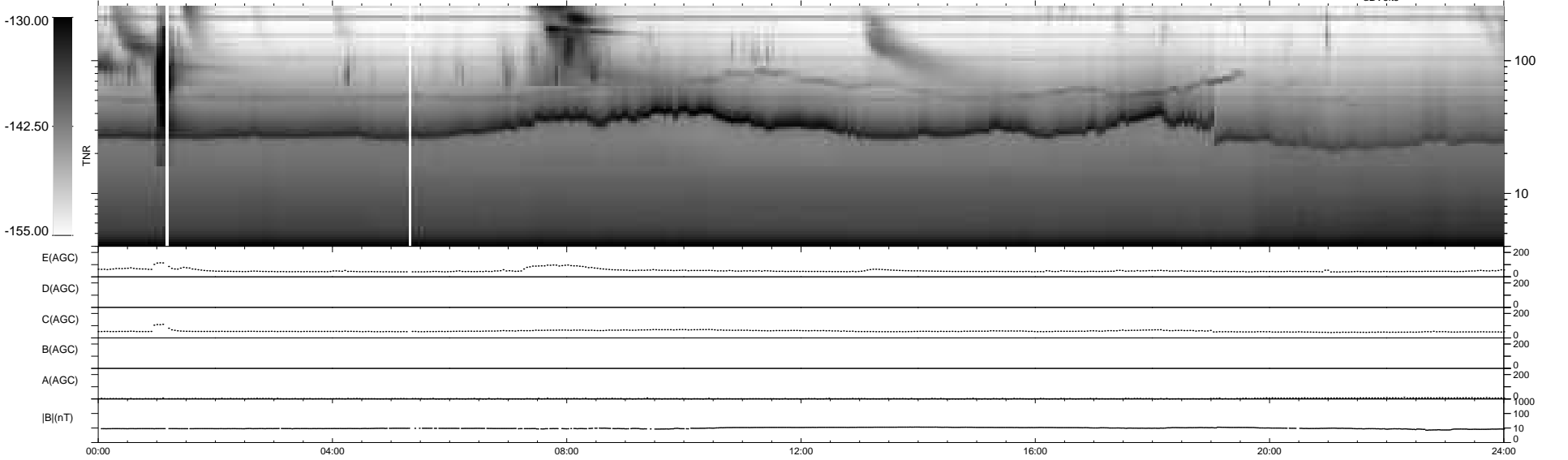
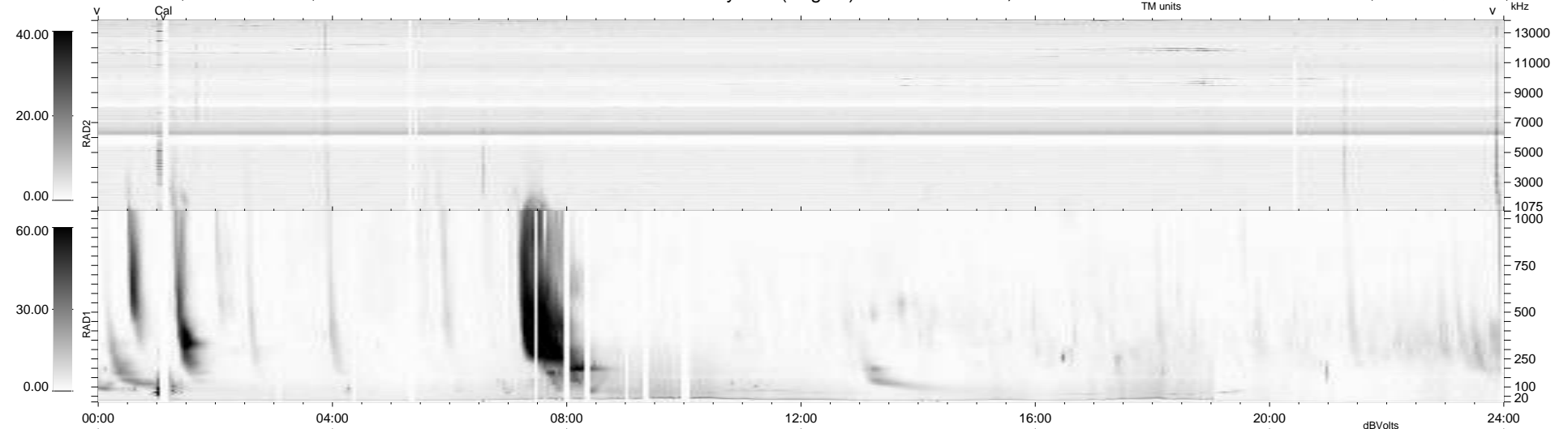
37 bad + 902 good MF/939MF projected (96%) - 0 missing MFs
 Avg interval = 180 secs
 Re = 261.35 (260.60, 2.88, 19.56 GSE)

windlib 2.0b

LZ version = v01

WIND/WAVES Summary Plot (Page 1) for 12-APR-2014, DOY = 102

DAILY 2014-04-13 18:46:03
 Re = 261.34 (260.60, -0.67, 19.72 GSE)



RAD2
 Antenna Ey
 Mode LIN(1)
 SUM/SEP SEP
 Toggle OFF
 RAD1
 Antenna Ex
 Mode LIS(2,4)
 SUM/SEP SUM
 Toggle OFF
 TNR
 Antenna ExEy
 Mode A-32
 Sweep ACE