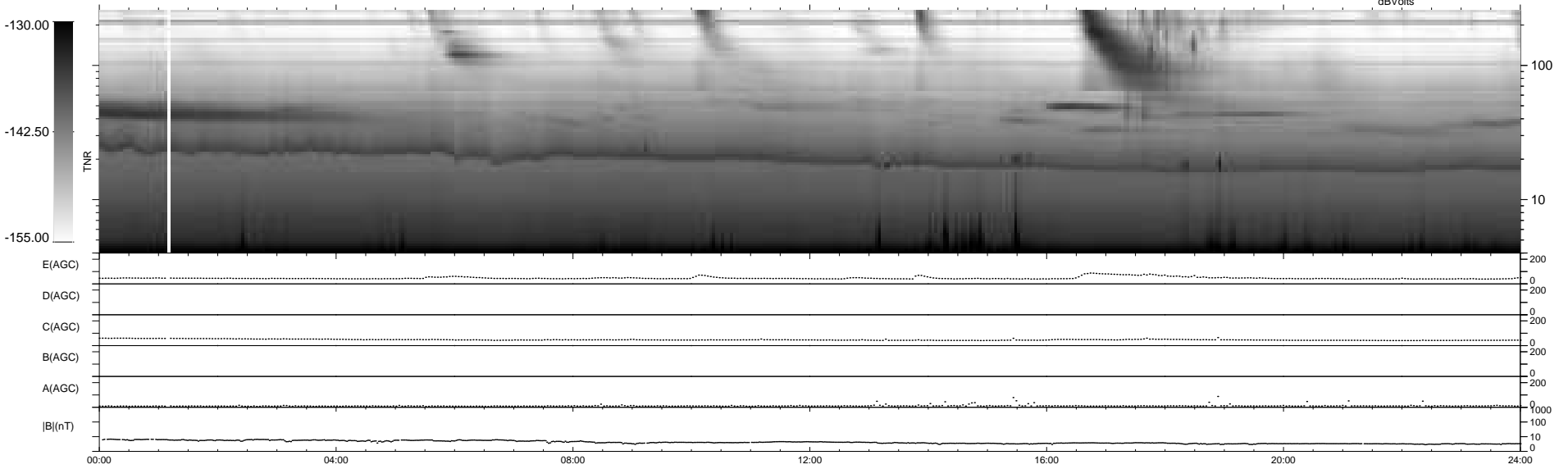
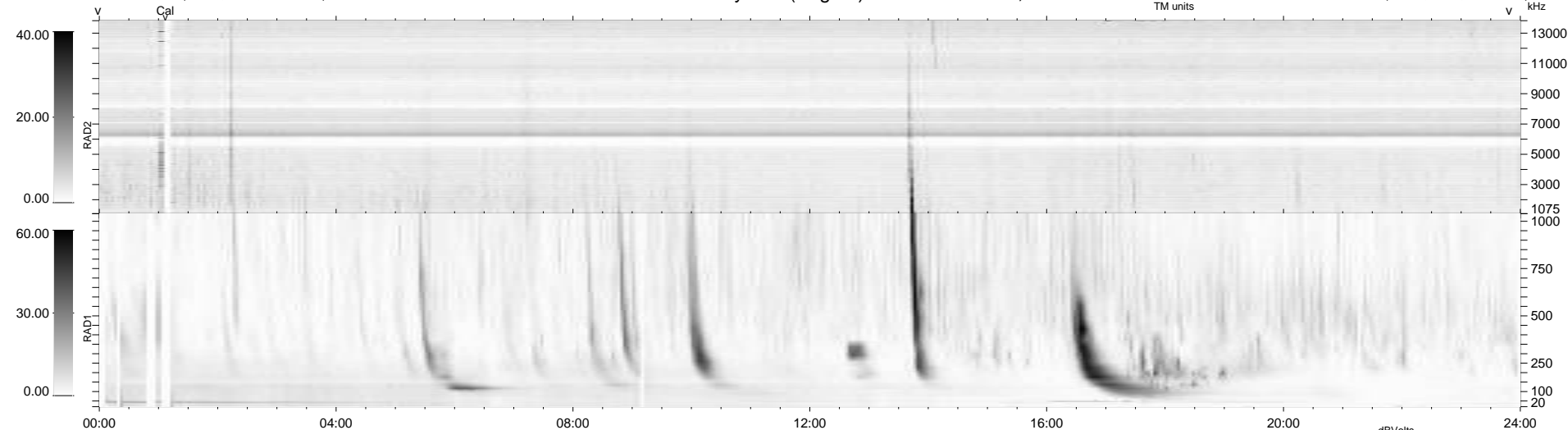


9 bad + 930 good MF/939MF projected (99%) - 0 missing MFs  
 Avg interval = 180 secs  
 Re = 261.49 (259.15, 30.09, 17.71 GSE)

windlib 2.0b LZ version = v01  
 DAILY 2014-04-05 17:46:05  
 Re = 261.53 (259.52, 26.89, 17.99 GSE)

### WIND/WAVES Summary Plot (Page 1) for 04-APR-2014, DOY = 94



RAD2 Antenna Ey .....  
 Mode LIN(1) .....  
 SUM/SEP SEP .....  
 Toggle OFF .....  
 RAD1 Antenna .....  
 Mode .....  
 SUM/SEP .....  
 Toggle .....  
 TNR Antenna ExEy .....  
 Mode A-32 .....  
 Sweep ACE .....