

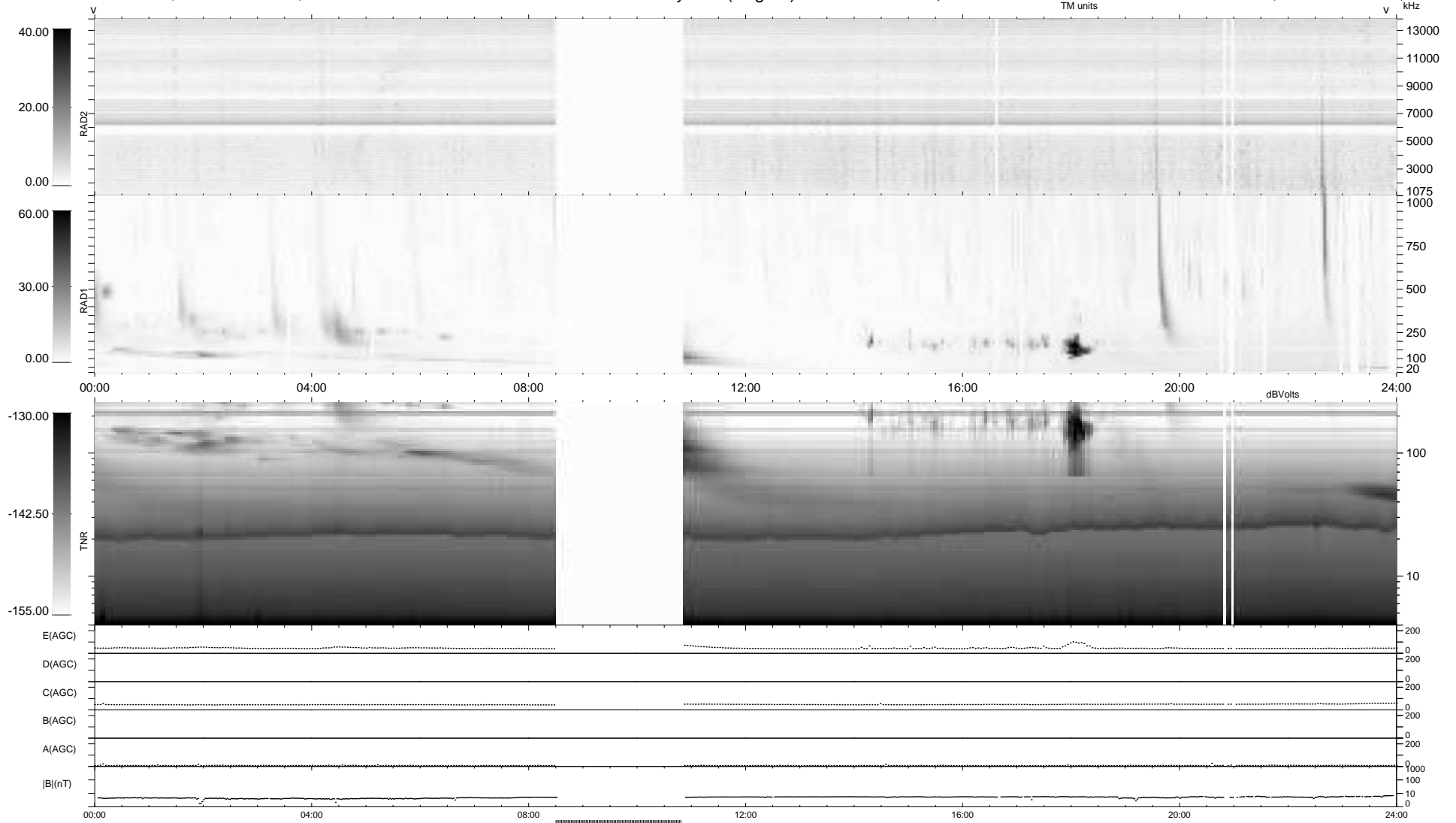
31 bad + 817 good MF/939MF projected (87%) - 91 missing MFs
 Avg interval = 180 secs
 Re = 261.41 (258.70, 33.26, 17.41 GSE)

windlib 2.0b

LZ version = v01

WIND/WAVES Summary Plot (Page 1) for 03-APR-2014, DOY = 93

DAILY 2014-04-04 20:46:04
 Re = 261.49 (259.14, 30.12, 17.71 GSE)



RAD2	Antenna	Ey
	Mode	LIN(1)
	SUM/SEP	SEP
	Toggle	OFF
RAD1	Antenna	Ex
	Mode	LIS(2,4)
	SUM/SEP	SUM
	Toggle	OFF
TNR	Antenna	ExEy
	Mode	A-32
	Sweep	ACE