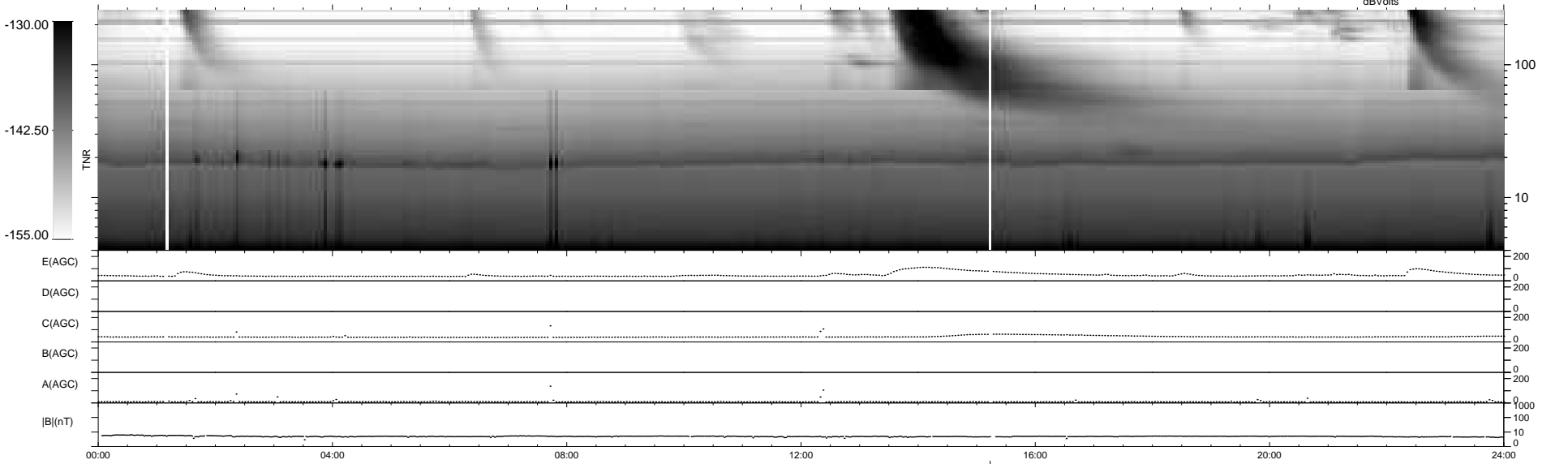
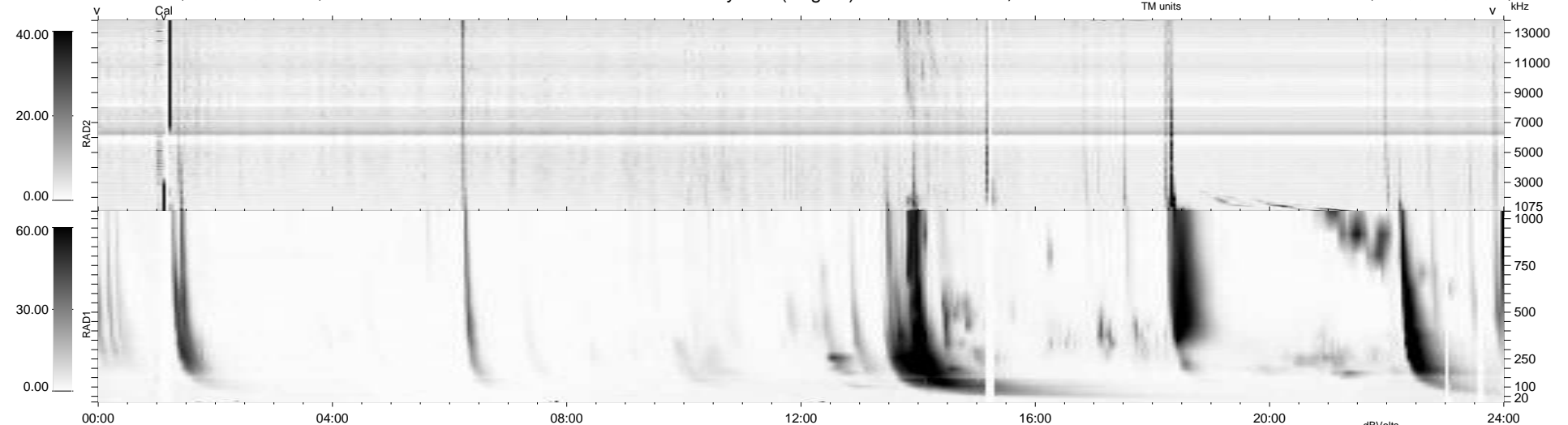


10 bad + 928 good MF/939MF projected (98%) - 1 missing MF
 Avg interval = 180 secs
 Re = 261.30 (258.19, 36.36, 17.10 GSE)

windlib 2.0b LZ version = v01
 DAILY 2014-04-03 10:46:59
 Re = 261.41 (258.70, 33.28, 17.41 GSE)

WIND/WAVES Summary Plot (Page 1) for 02-APR-2014, DOY = 92



RAD2
 Antenna Ey
 Mode LIN(1)
 SUM/SEP SEP
 Toggle OFF
 RAD1
 Antenna Ex
 Mode LIS(2,4)
 SUM/SEP SUM
 Toggle OFF
 TNR
 Antenna ExEy
 Mode A-32
 Sweep ACE