

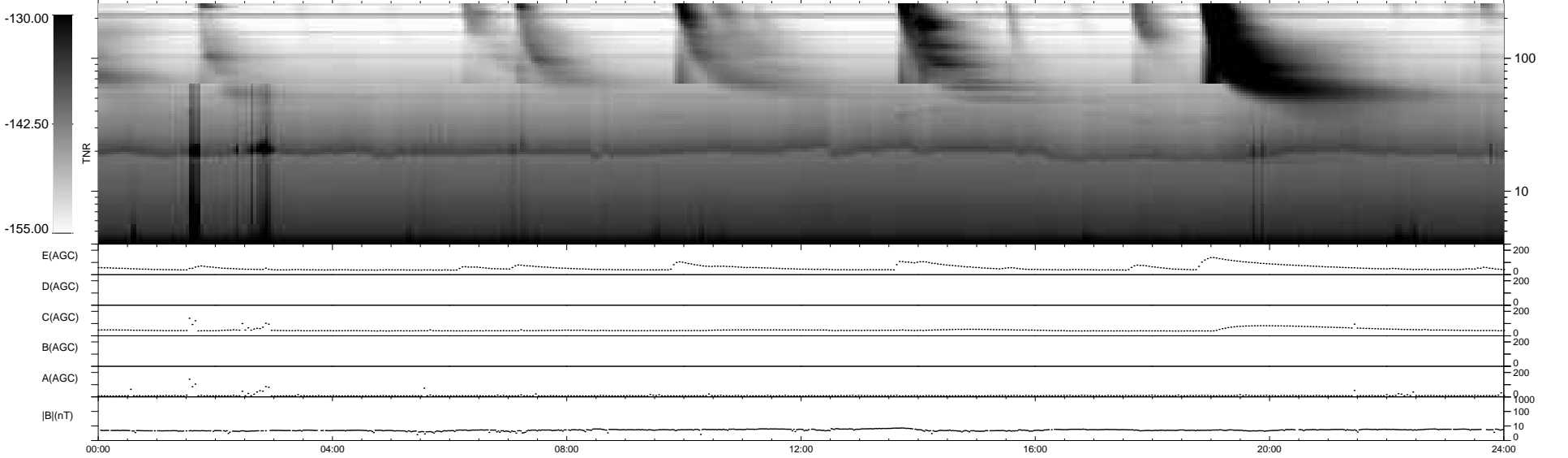
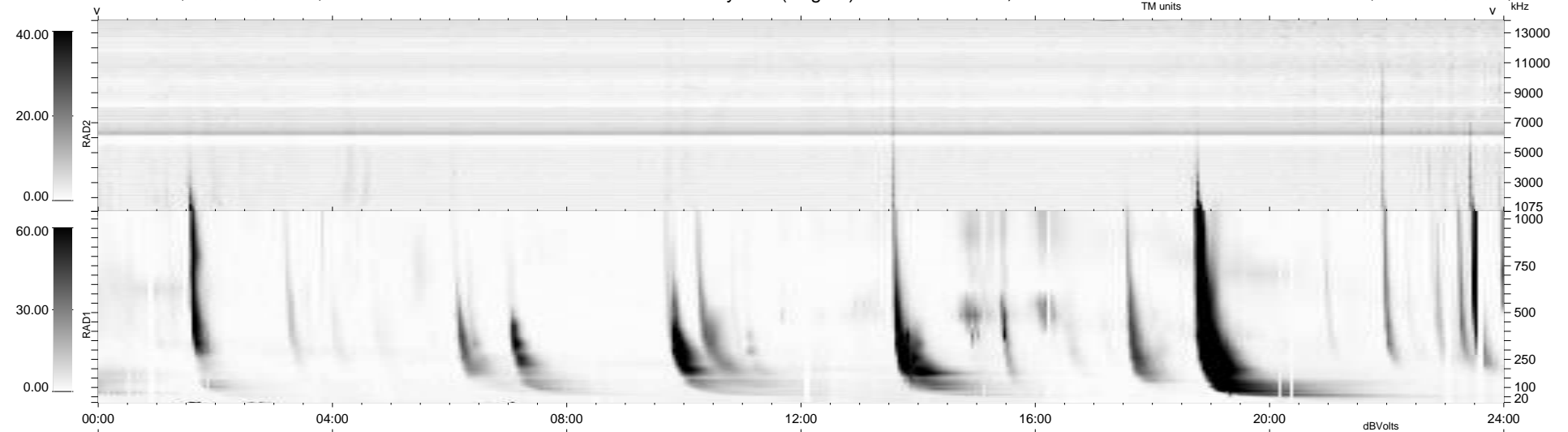
33 bad + 907 good MF/940MF projected (96%) - 0 missing MFs
 Avg interval = 180 secs
 Re = 261.13 (257.59, 39.40, 16.77 GSE)

windlib 2.0b

LZ version = v01

WIND/WAVES Summary Plot (Page 1) for 01-APR-2014, DOY = 91

DAILY 2014-04-02 20:46:05
 Re = 261.29 (258.18, 36.38, 17.10 GSE)



RAD2
 Antenna Ey
 Mode LIN(1)
 SUM/SEP SEP
 Toggle OFF
 RAD1
 Antenna Ex
 Mode LIS(2,4)
 SUM/SEP SUM
 Toggle OFF
 TNR
 Antenna ExEy
 Mode A-32
 Sweep ACE