

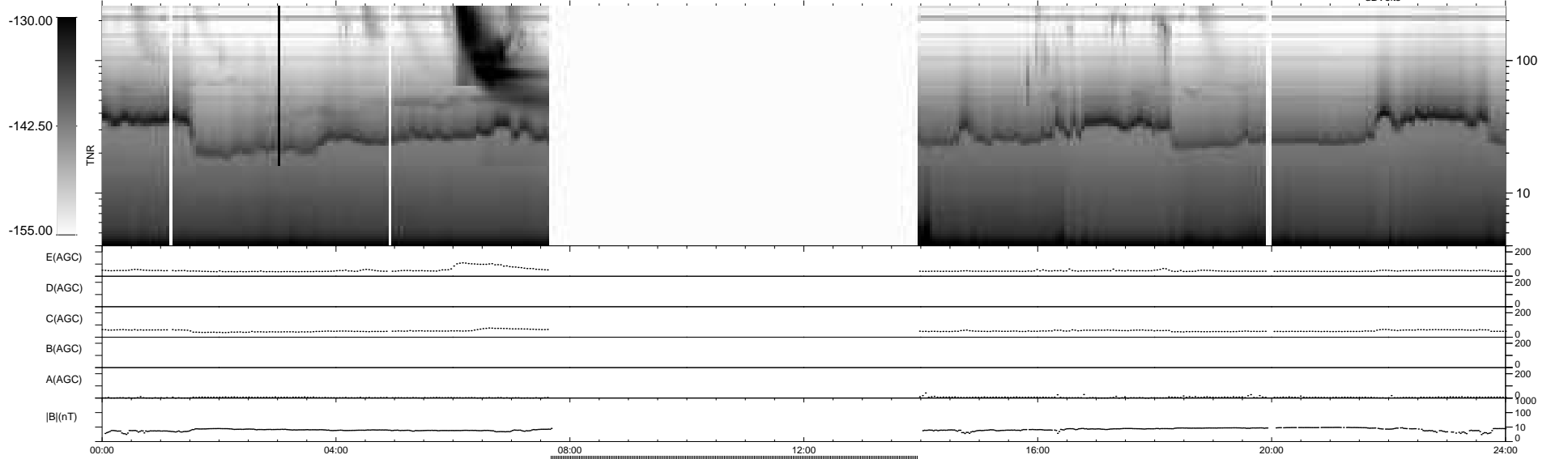
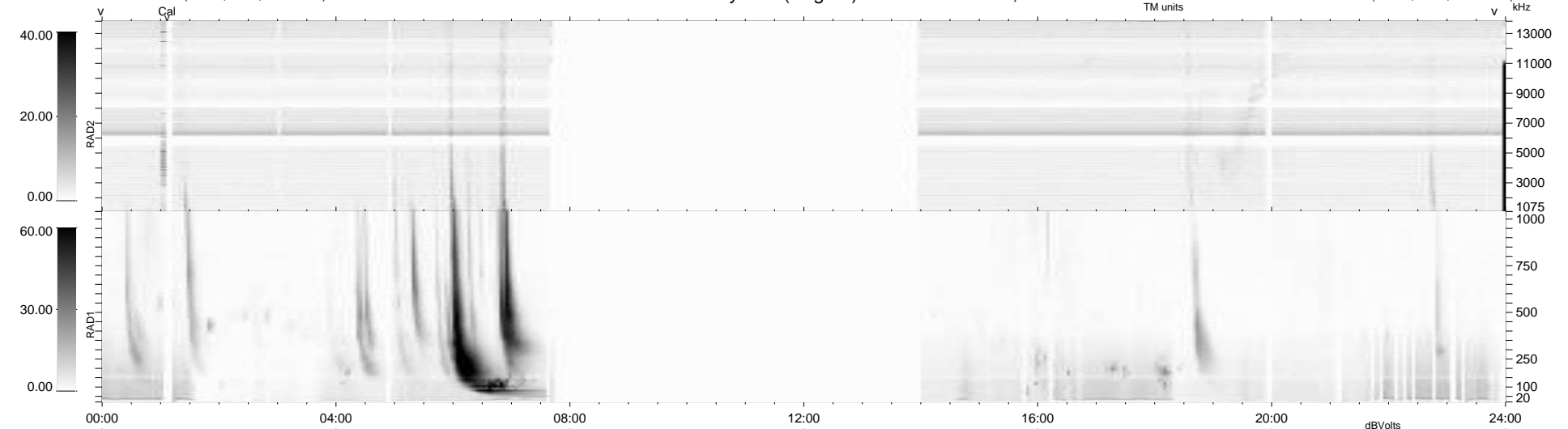
34 bad + 659 good MF/939MF projected (70%) - 246 missing MFs
 Avg interval = 180 secs
 Re = 256.53 (246.54, 69.88, 11.99 GSE)

windlib 2.0b

LZ version = v01

WIND/WAVES Summary Plot (Page 1) for 21-MAR-2014, DOY = 80

DAILY 2014-03-22 14:46:03
 Re = 257.04 (247.75, 67.34, 12.52 GSE)



RAD2
 Antenna Ey
 Mode LIN(1)
 SUM/SEP SEP
 Toggle OFF

RAD1
 Antenna Ex
 Mode LIS(2,4)
 SUM/SEP SUM
 Toggle OFF

TNR
 Antenna ExEy
 Mode A-32
 Sweep ACE