

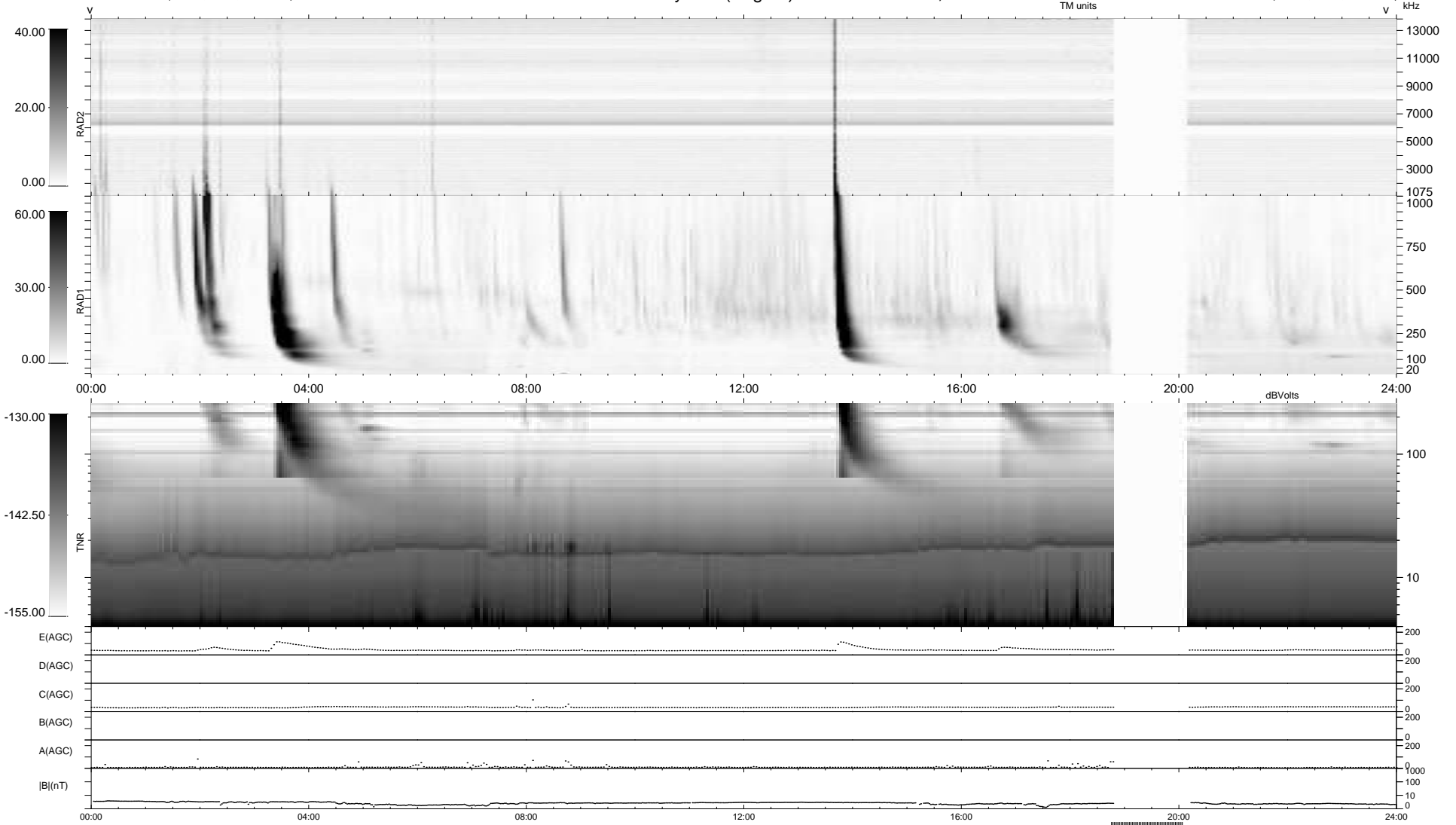
10 bad + 877 good MF/939MF projected (93%) - 52 missing MFs
 Avg interval = 180 secs
 Re = 254.06 (240.42, 81.63, 9.26 GSE)

windlib 2.0b

LZ version = v01

WIND/WAVES Summary Plot (Page 1) for 16-MAR-2014, DOY = 75

DAILY 2014-03-17 23:46:04
 Re = 254.54 (241.62, 79.46, 9.82 GSE)



```

RAD2
Antenna Ey .....
Mode LIN(1) .....
SUM/SEP SEP .....
Toggle OFF .....

RAD1
Antenna Ex .....
Mode LIS(2,4) .....
SUM/SEP SUM .....
Toggle OFF .....

TNR
Antenna ExEy .....
Mode A-32 .....
Sweep ACE .....
  
```