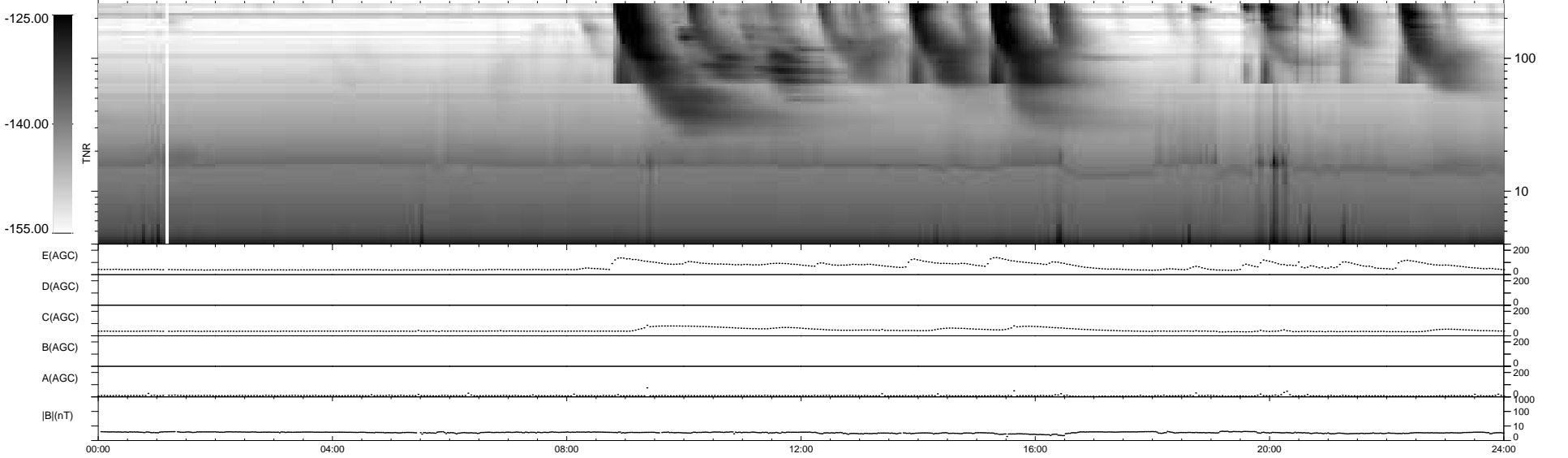
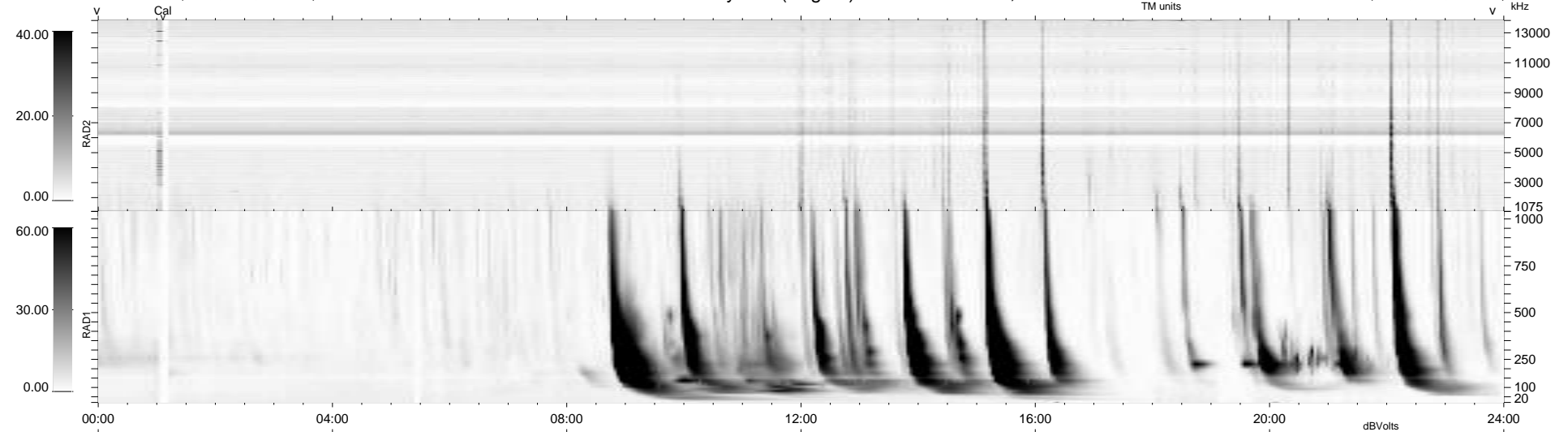


6 bad + 933 good MF/939MF projected (99%) - 0 missing MFs  
 Avg interval = 180 secs  
 Re = 253.59 (239.22, 83.70, 8.68 GSE)

windlib 2.0b LZ version = v01  
 DAILY 2014-03-16 09:46:05  
 Re = 254.06 (240.41, 81.64, 9.25 GSE)

### WIND/WAVES Summary Plot (Page 1) for 15-MAR-2014, DOY = 74



RAD2  
 Antenna Ey .....  
 Mode LIN(1) .....  
 SUM/SEP SEP .....  
 Toggle OFF .....  
 RAD1  
 Antenna Ex .....  
 Mode LIS(2,4) .....  
 SUM/SEP SUM .....  
 Toggle OFF .....  
 TNR  
 Antenna ExEy .....  
 Mode A-32 .....  
 Sweep ACE .....