

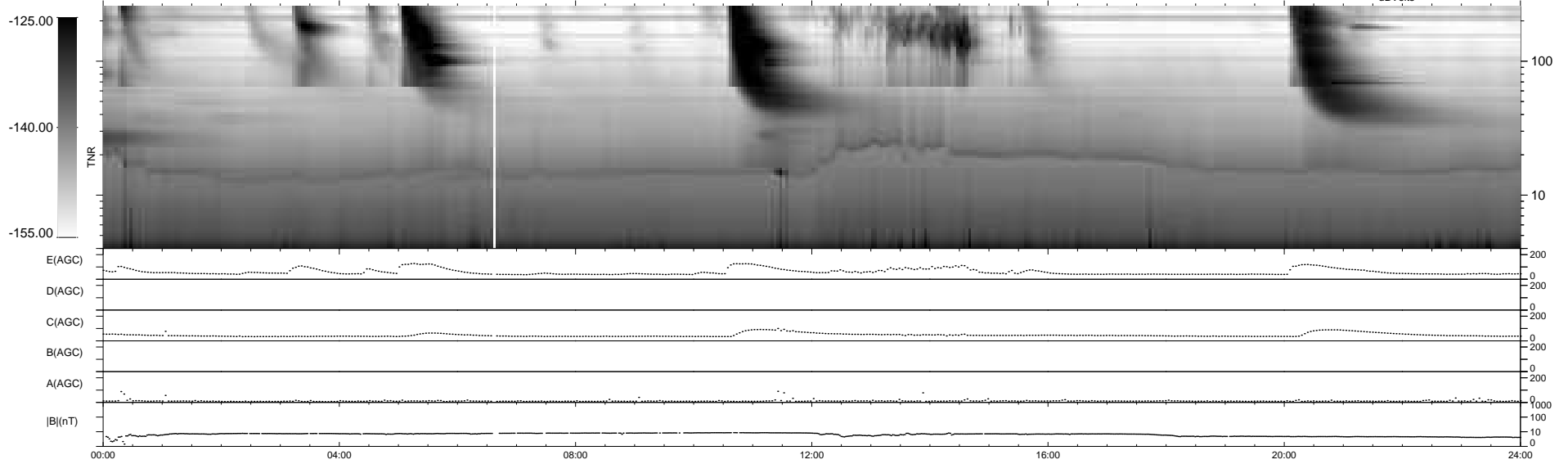
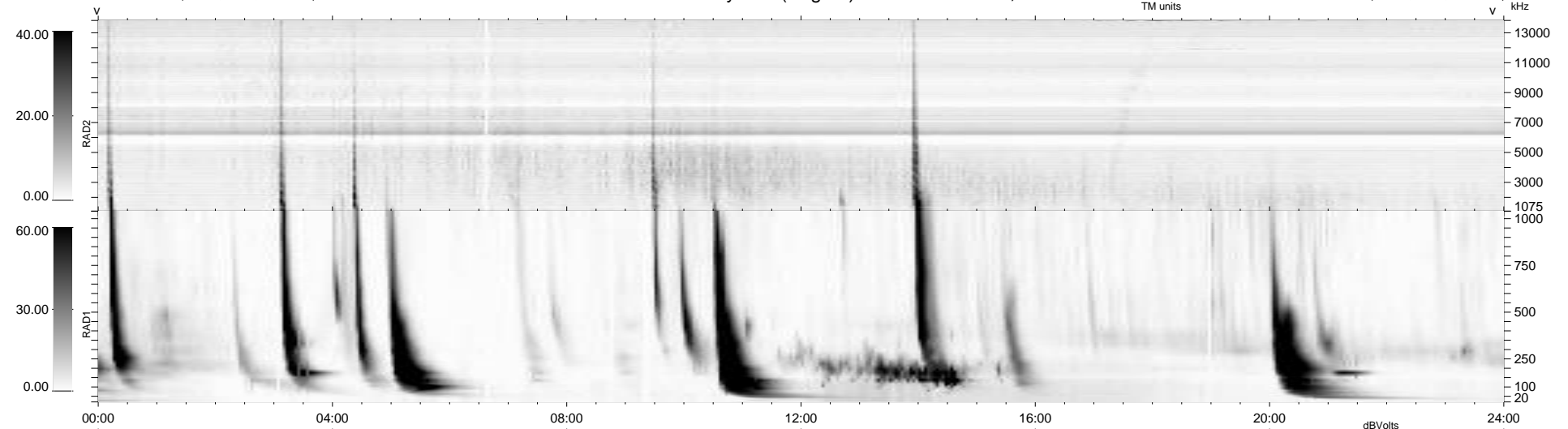
25 bad + 914 good MF/939MF projected (97%) - 0 missing MFs
Avg interval = 180 secs
Re = 253.10 (238.03, 85.67, 8.10 GSE)

windlib 2.0b

LZ version = v01

WIND/WAVES Summary Plot (Page 1) for 14-MAR-2014, DOY = 73

DAILY 2014-03-15 23:46:05
Re = 253.58 (239.21, 83.72, 8.68 GSE)



RAD2
Antenna Ey
Mode LIN(1)
SUM/SEP SEP
Toggle OFF

RAD1
Antenna Ex
Mode LIS(2,4)
SUM/SEP SUM
Toggle OFF

TNR
Antenna ExEy
Mode A-32
Sweep ACE