

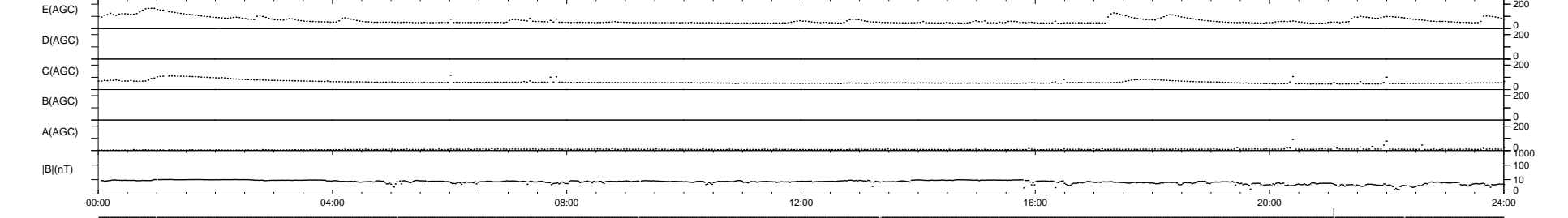
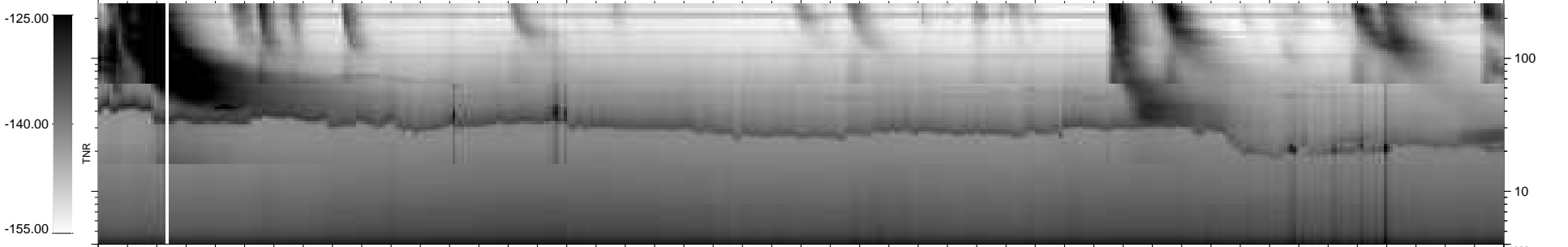
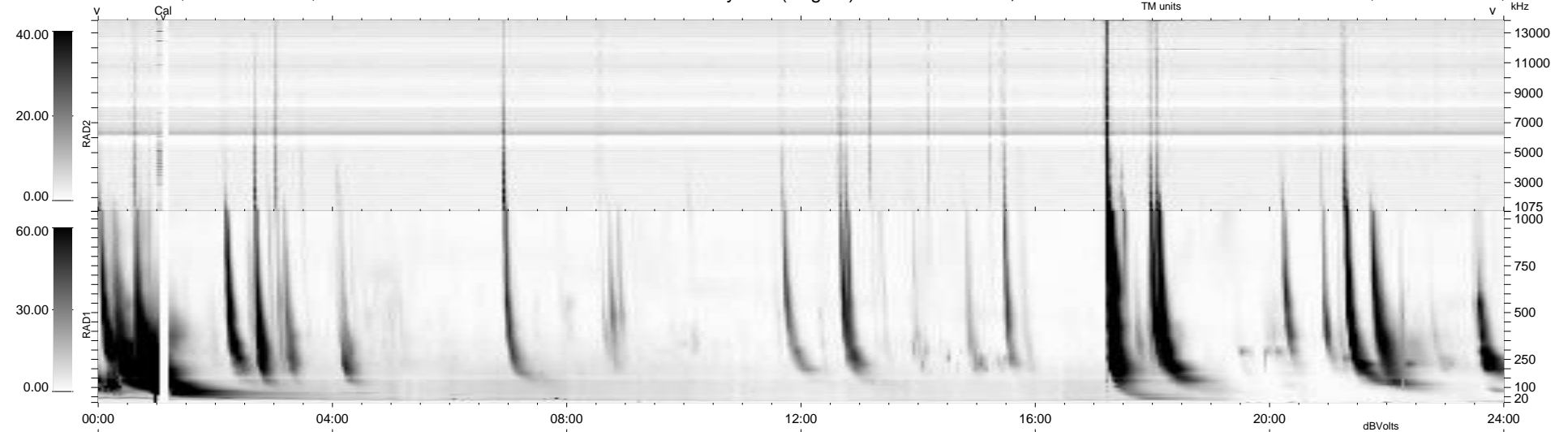
6 bad + 932 good MF/939MF projected (99%) - 1 missing MF
 Avg interval = 180 secs
 Re = 252.61 (236.85, 87.51, 7.51 GSE)

windlib 2.0b

LZ version = v02

WIND/WAVES Summary Plot (Page 1) for 13-MAR-2014, DOY = 72

DAILY 2014-03-18 10:46:04
 Re = 253.10 (238.02, 85.68, 8.09 GSE)



RAD2
 Antenna Ey
 Mode LIN(1)
 SUM/SEP SEP
 Toggle OFF
 RAD1
 Antenna Ex
 Mode LIS(2,4)
 SUM/SEP SUM
 Toggle OFF
 TNR
 Antenna ExEy
 Mode A-32
 Sweep ACE