

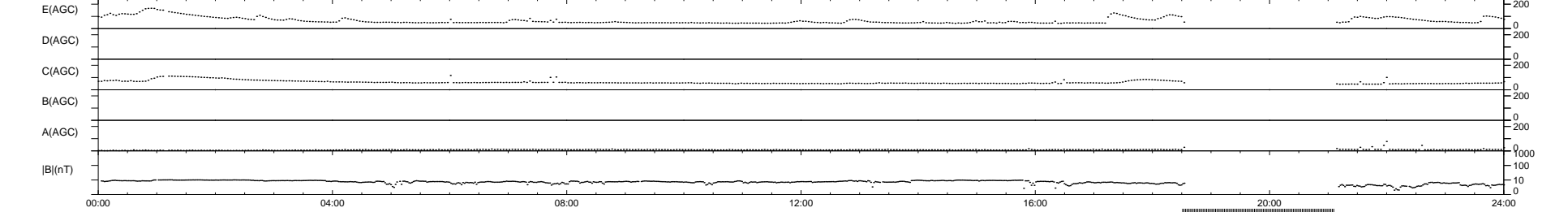
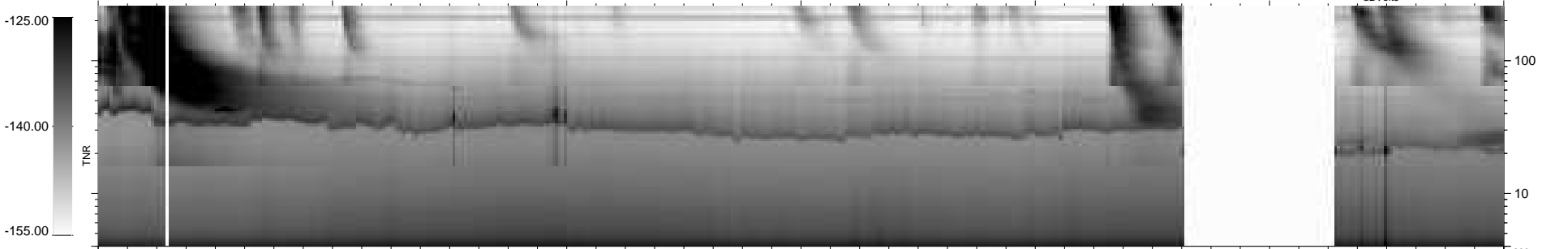
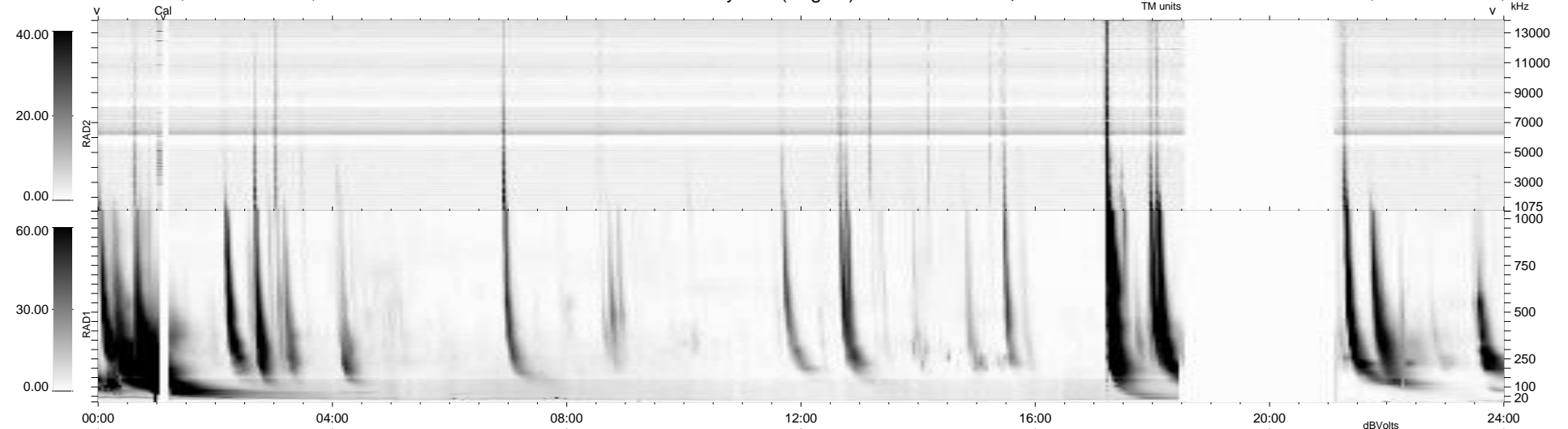
7 bad + 830 good MF/939MF projected (88%) - 102 missing MFs
 Avg interval = 180 secs
 Re = 252.61 (236.85, 87.51, 7.51 GSE)

windlib 2.0b

LZ version = v01

WIND/WAVES Summary Plot (Page 1) for 13-MAR-2014, DOY = 72

DAILY 2014-03-15 03:46:03
 Re = 253.10 (238.02, 85.68, 8.09 GSE)



```

RAD2
Antenna Ey .....
Mode LIN(1) .....
SUM/SEP SEP .....
Toggle OFF .....

RAD1
Antenna Ex .....
Mode LIS(2,4) .....
SUM/SEP SUM .....
Toggle OFF .....

TNR
Antenna ExEy .....
Mode A-32 .....
Sweep ACE .....
  
```