

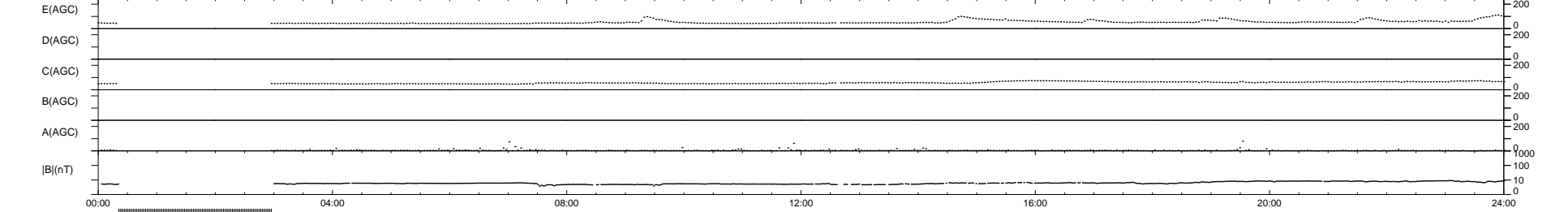
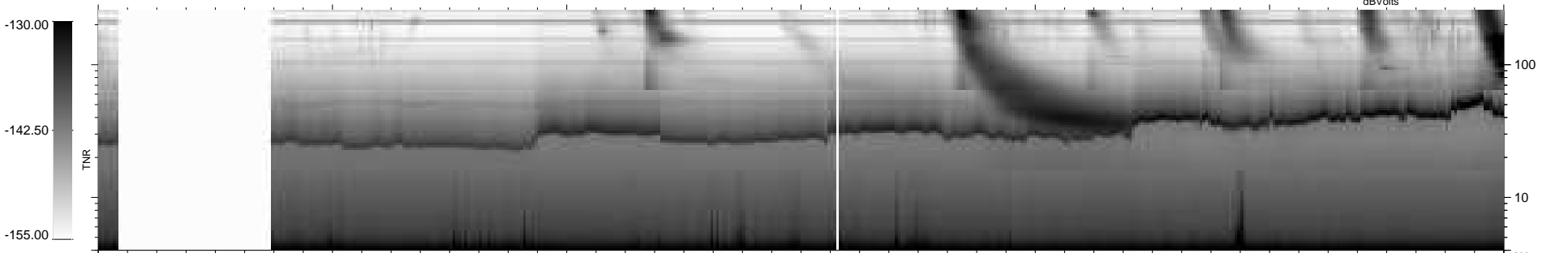
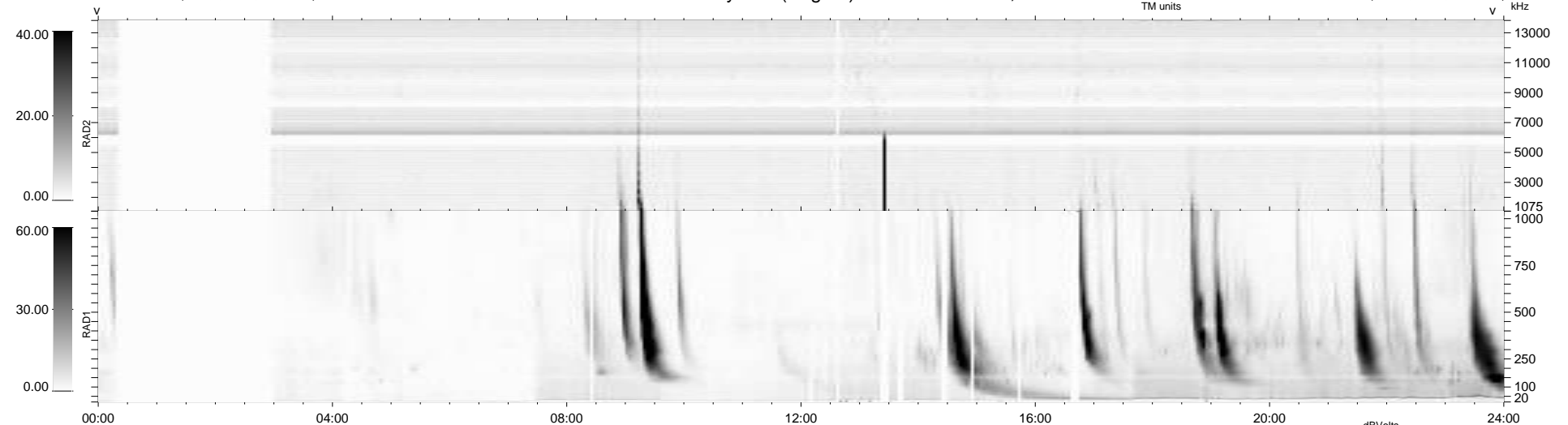
34 bad + 802 good MF/939MF projected (85%) - 103 missing MFs
 Avg interval = 180 secs
 Re = 252.10 (235.68, 89.24, 6.92 GSE)

windlib 2.0b

LZ version = v01

WIND/WAVES Summary Plot (Page 1) for 12-MAR-2014, DOY = 71

DAILY 2014-03-13 20:46:03
 Re = 252.61 (236.84, 87.53, 7.51 GSE)



```

RAD2
Antenna Ey .....
Mode LIN(1) .....
SUM/SEP SEP .....
Toggle OFF .....

RAD1
Antenna Ex .....
Mode LIS(2,4) .....
SUM/SEP SUM .....
Toggle OFF .....

TNR
Antenna ExEy .....
Mode A-32 .....
Sweep ACE .....
  
```