

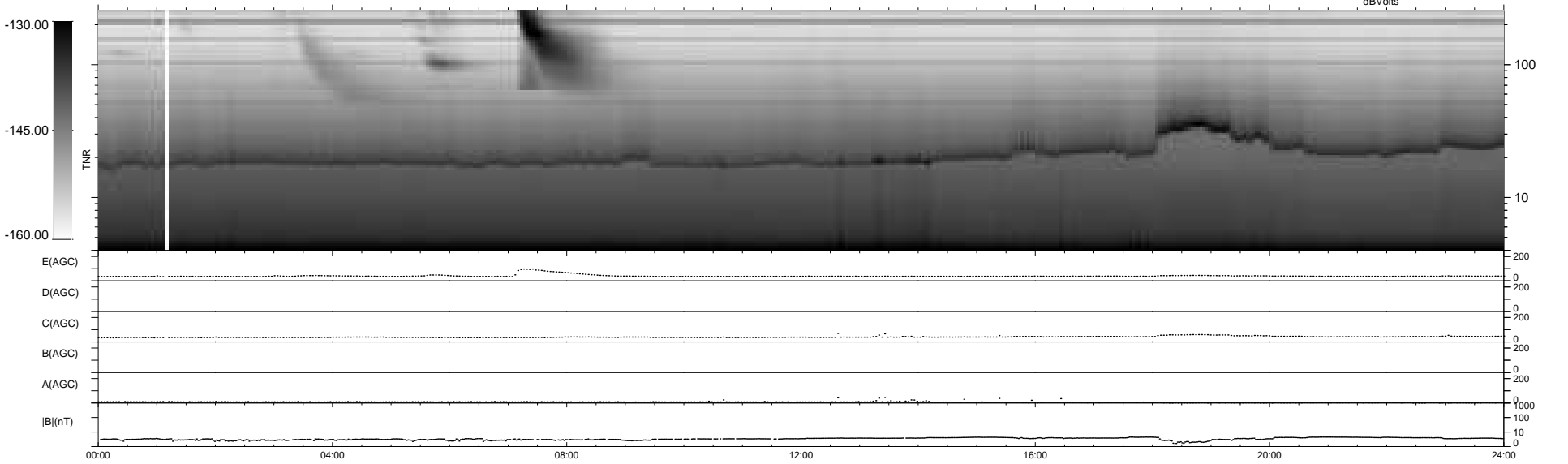
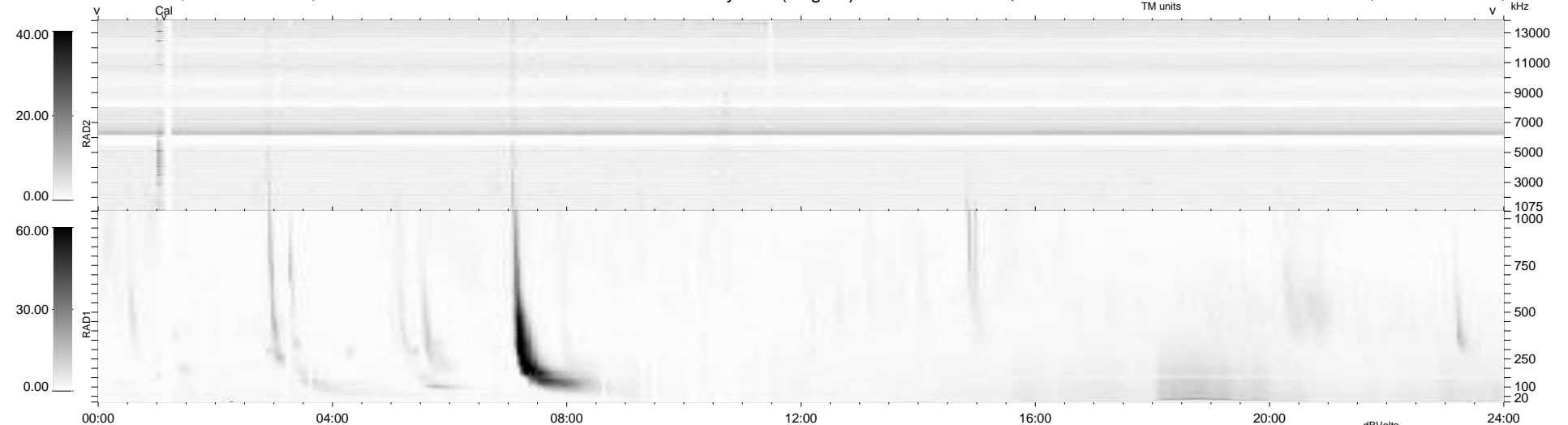
25 bad + 915 good MF/940MF projected (97%) - 0 missing MFs
Avg interval = 180 secs
Re = 250.41 (232.20, 93.60, 5.11 GSE)

windlib 2.0b

LZ version = v01

WIND/WAVES Summary Plot (Page 1) for 09-MAR-2014, DOY = 68

DAILY 2014-03-11 04:46:04
Re = 251.01 (233.35, 92.30, 5.71 GSE)



RAD2
Antenna Ey
Mode LIN(1)
SUM/SEP SEP
Toggle OFF

RAD1
Antenna Ex
Mode LIS(2,4)
SUM/SEP SUM
Toggle OFF

TNR
Antenna ExEy
Mode A-32
Sweep ACE