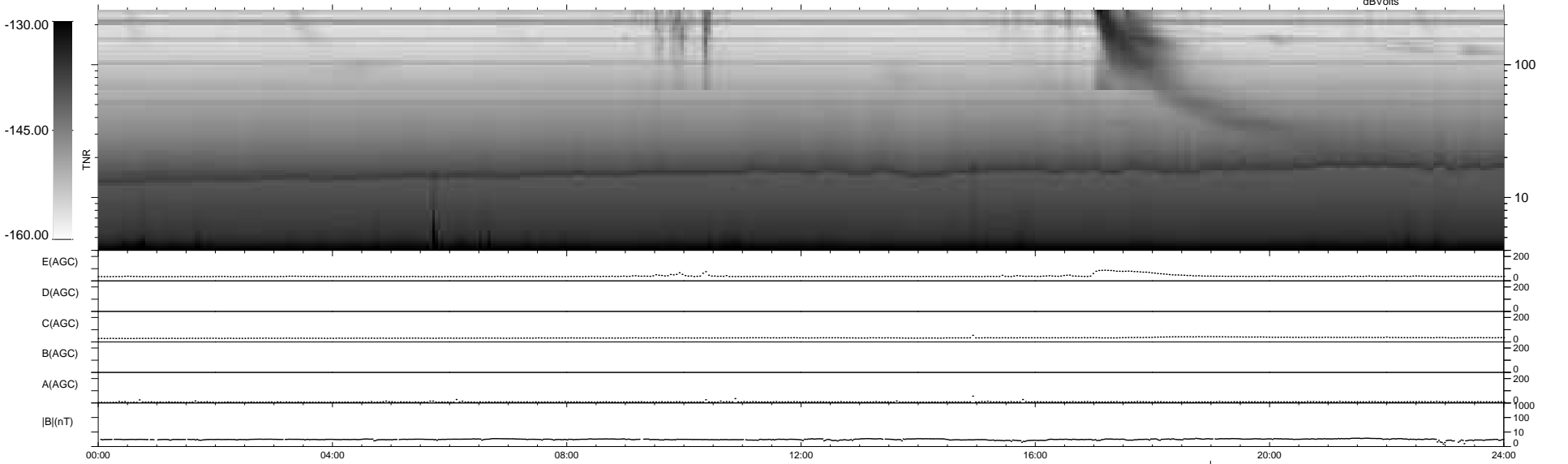
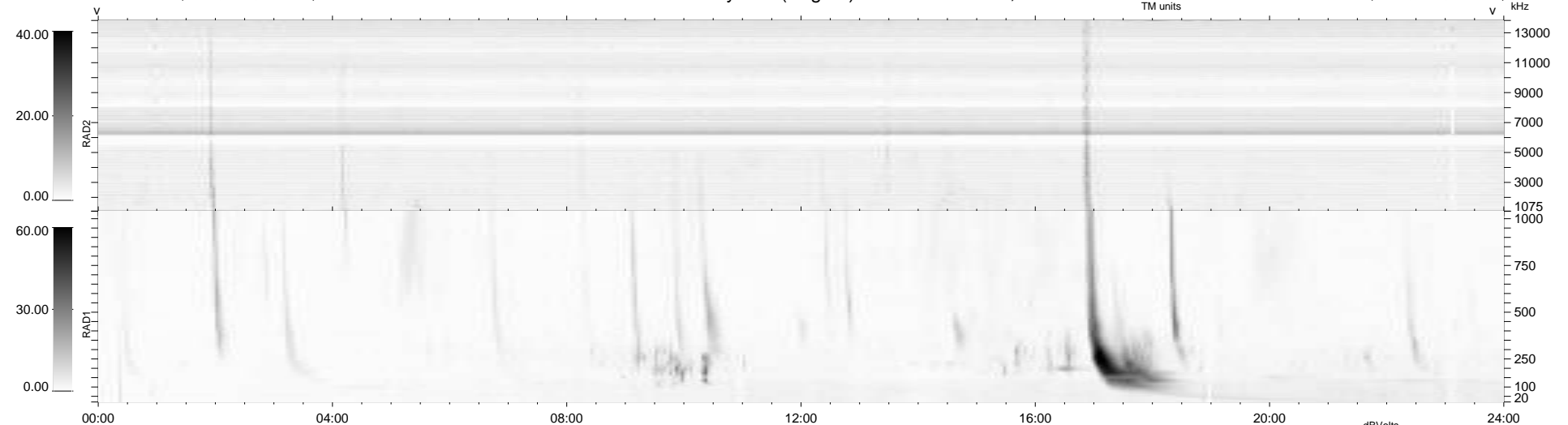


14 bad + 924 good MF/939MF projected (98%) - 1 missing MF
 Avg interval = 180 secs
 Re = 249.78 (231.05, 94.78, 4.51 GSE)

windlib 2.0b LZ version = v01
 DAILY 2014-03-09 23:46:05
 Re = 250.41 (232.20, 93.61, 5.11 GSE)

WIND/WAVES Summary Plot (Page 1) for 08-MAR-2014, DOY = 67



```

RAD2
Antenna Ey .....
Mode LIN(1) .....
SUM/SEP SEP .....
Toggle OFF .....

RAD1
Antenna Ex .....
Mode LIS(2,4) .....
SUM/SEP SUM .....
Toggle OFF .....

TNR
Antenna ExEy .....
Mode A-32 .....
Sweep ACE .....
  
```