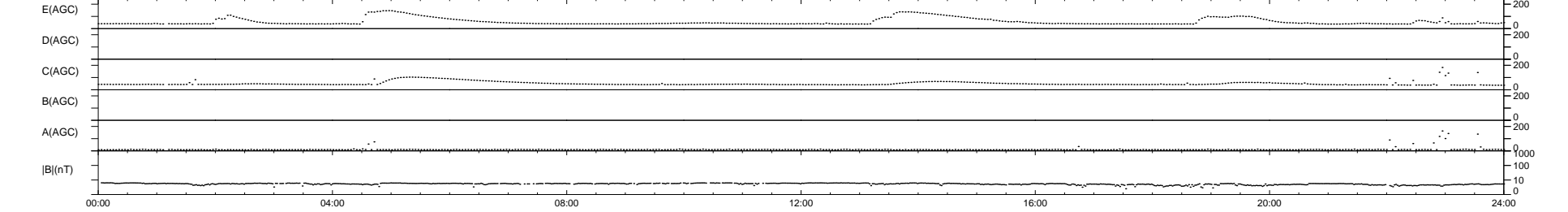
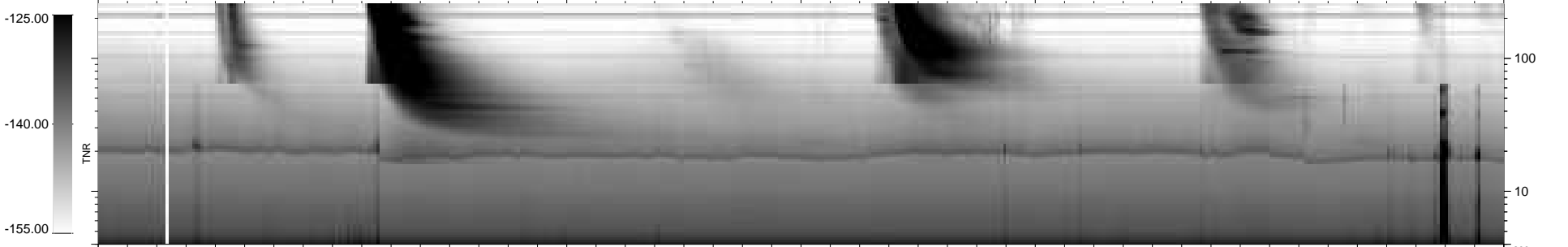
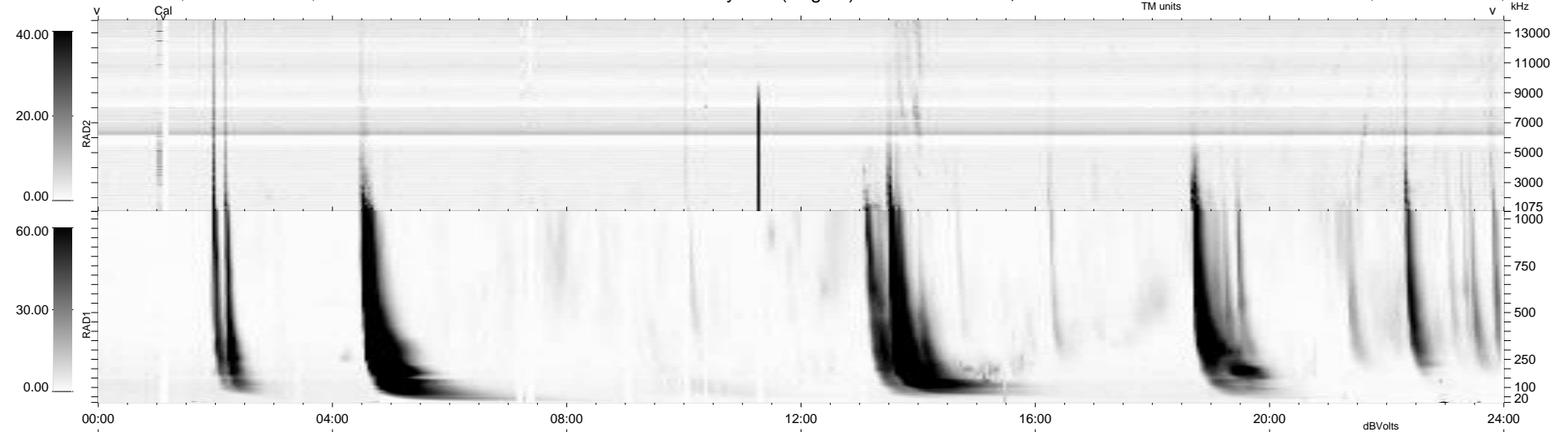


32 bad + 907 good MF/939MF projected (96%) - 0 missing MFs  
 Avg interval = 180 secs  
 Re = 247.54 (227.55, 97.43, 2.67 GSE)

windlib 2.0b LZ version = v01  
 DAILY 2014-03-06 19:46:04  
 Re = 248.34 (228.72, 96.70, 3.28 GSE)

### WIND/WAVES Summary Plot (Page 1) for 05-MAR-2014, DOY = 64



RAD2  
 Antenna Ey  
 Mode LIN(1)  
 SUM/SEP SEP  
 Toggle OFF

RAD1  
 Antenna Ex  
 Mode LIS(2/4)  
 SUM/SEP SUM  
 Toggle OFF

TNR  
 Antenna ExEy  
 Mode A-32  
 Sweep ACE