

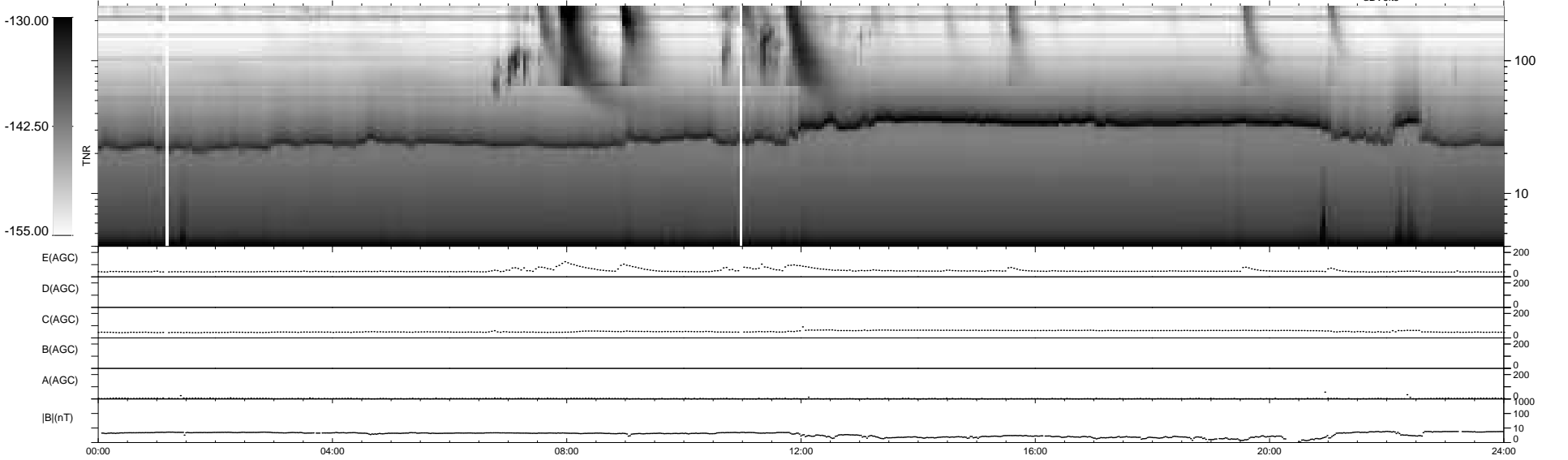
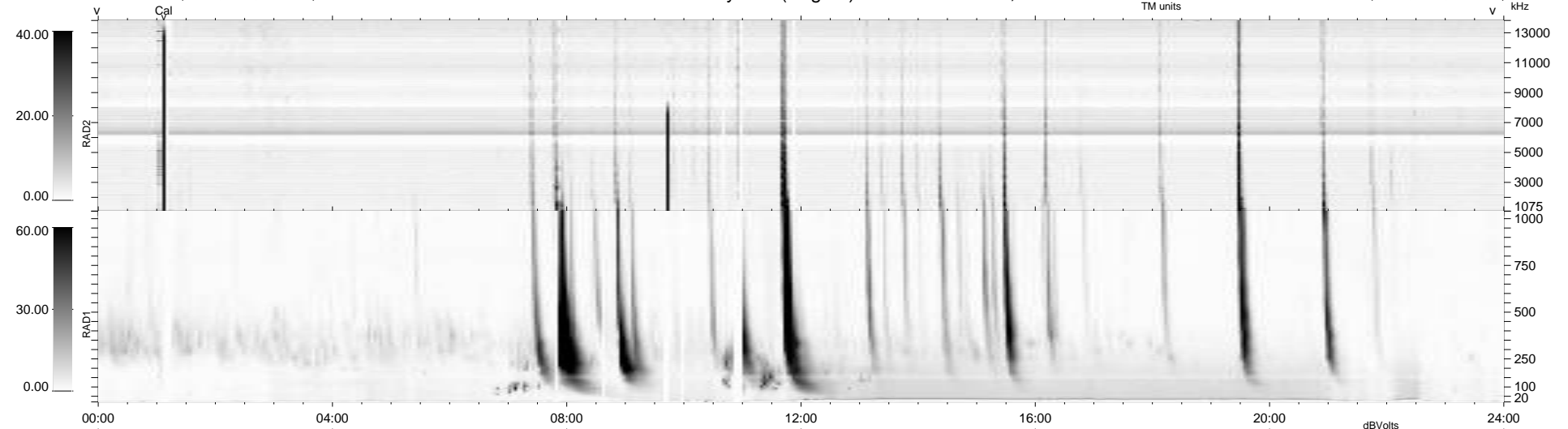
31 bad + 908 good MF/939MF projected (96%) - 0 missing MFs  
 Avg interval = 180 secs  
 Re = 245.74 (225.14, 98.48, 1.43 GSE)

windlib 2.0b

LZ version = v01

### WIND/WAVES Summary Plot (Page 1) for 03-MAR-2014, DOY = 62

DAILY 2014-03-04 20:46:03  
 Re = 246.67 (226.34, 98.03, 2.05 GSE)



RAD2  
 Antenna Ey .....  
 Mode LIN(1) .....  
 SUM/SEP SEP .....  
 Toggle OFF .....  
 RAD1  
 Antenna Ex .....  
 Mode LIS(2,4) .....  
 SUM/SEP SUM .....  
 Toggle OFF .....  
 TNR  
 Antenna ExEy .....  
 Mode A-32 .....  
 Sweep ACE .....