

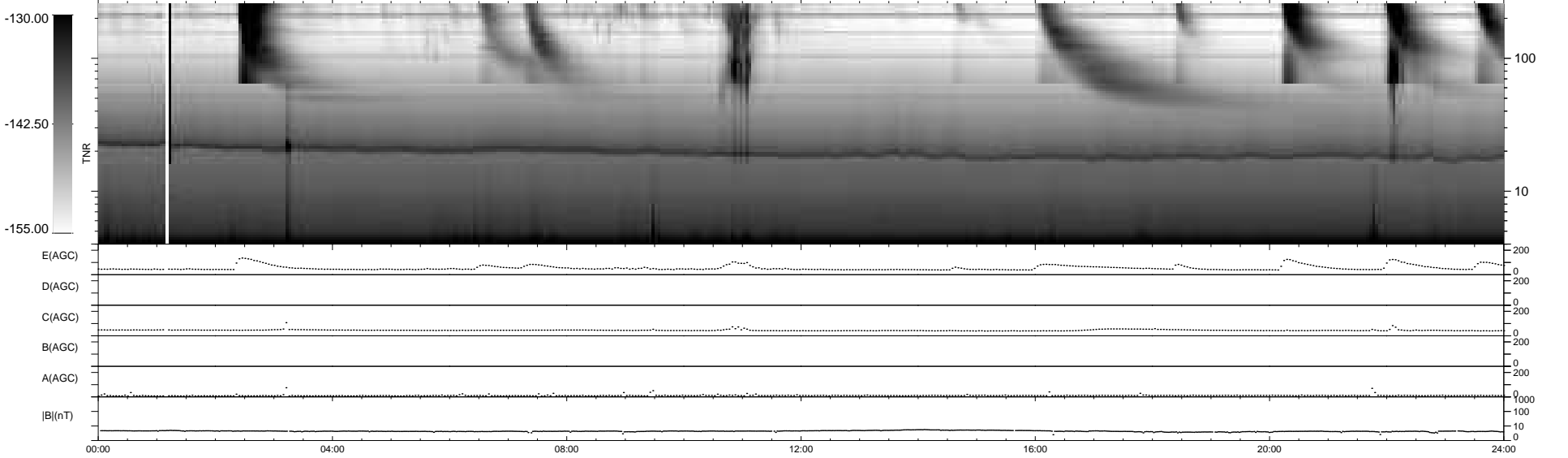
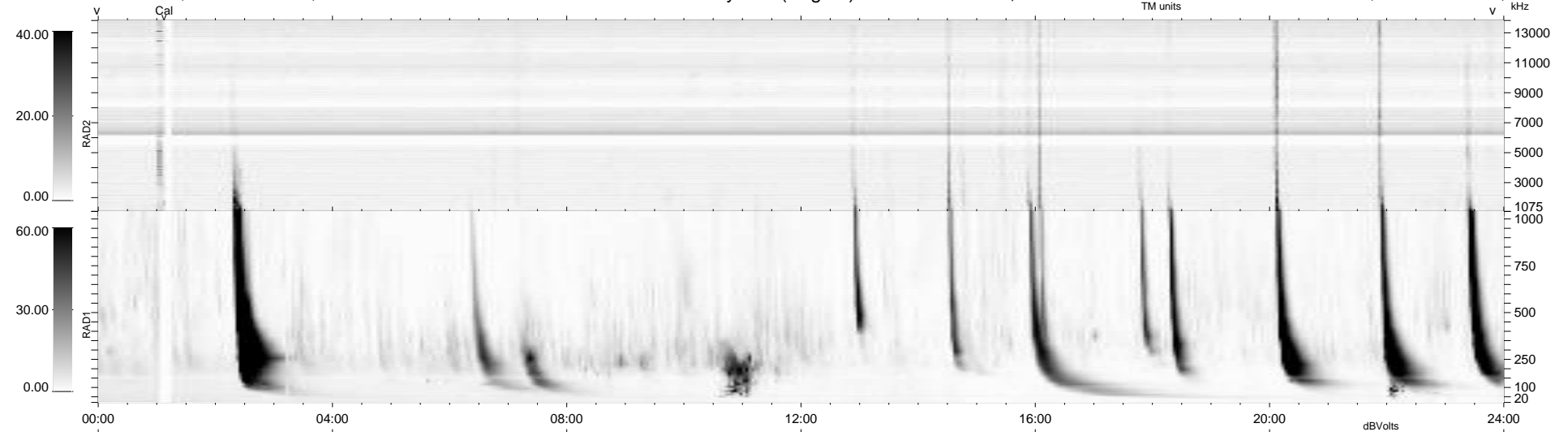
6 bad + 934 good MF/940MF projected (99%) - 0 missing MFs
 Avg interval = 180 secs
 Re = 243.65 (222.63, 98.98, 0.18 GSE)

windlib 2.0b

LZ version = v01

WIND/WAVES Summary Plot (Page 1) for 01-MAR-2014, DOY = 60

DAILY 2014-03-02 20:46:04
 Re = 244.72 (223.89, 98.80, 0.81 GSE)



RAD2
 Antenna Ey
 Mode LIN(1)
 SUM/SEP SEP
 Toggle OFF
 RAD1
 Antenna Ex
 Mode LIS(2,4)
 SUM/SEP SUM
 Toggle OFF
 TNR
 Antenna ExEy
 Mode A-32
 Sweep ACE