

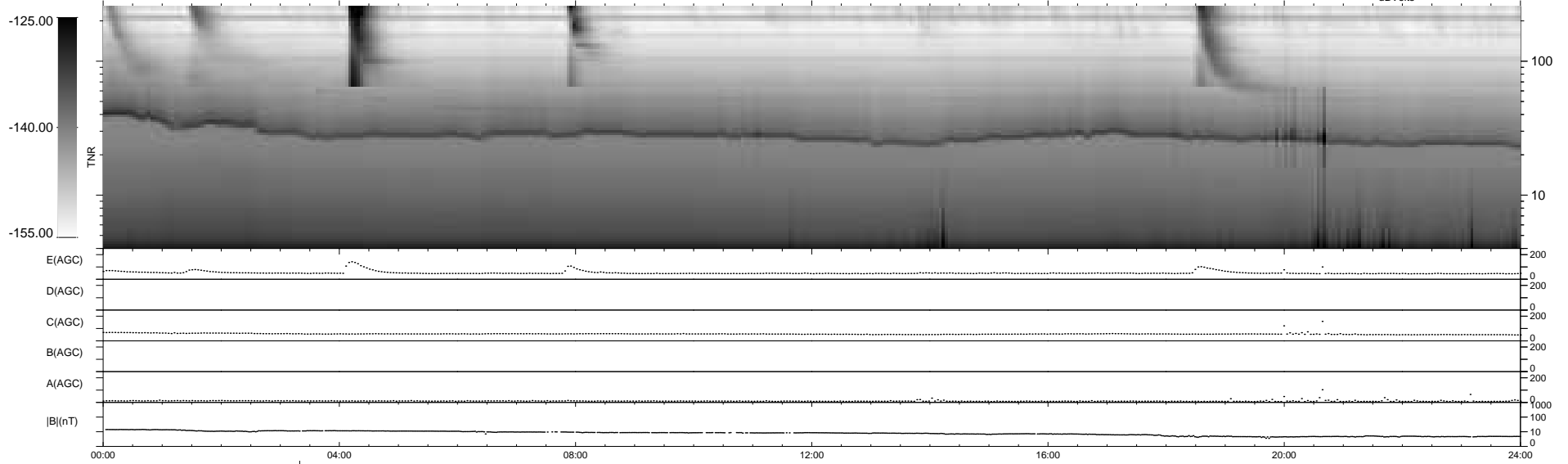
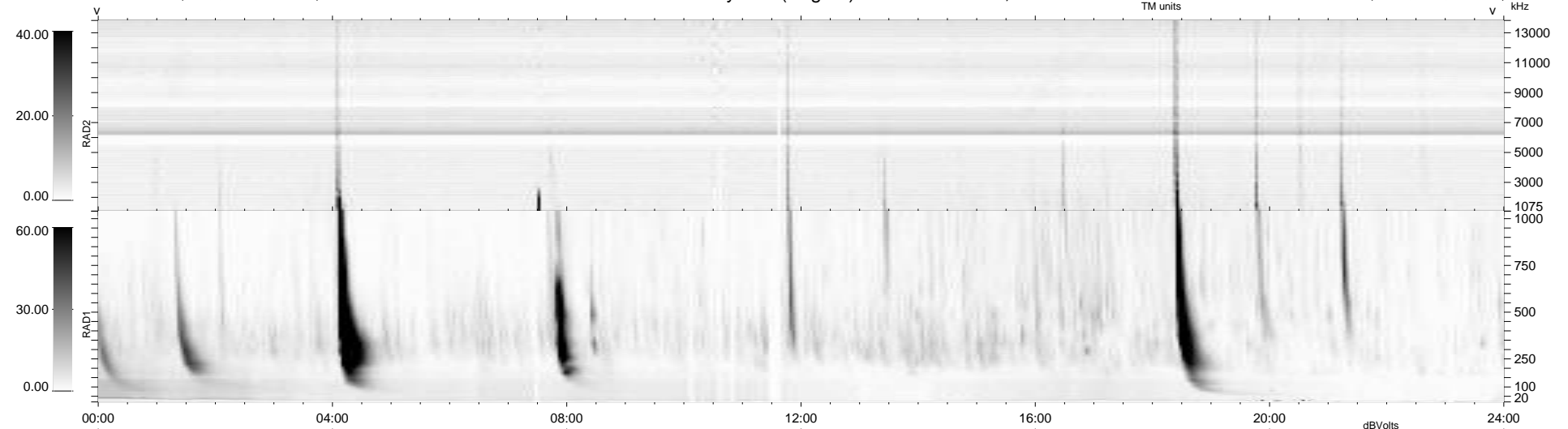
28 bad + 910 good MF/939MF projected (96%) - 1 missing MF
 Avg interval = 180 secs
 Re = 242.50 (221.35, 99.05, -0.45 GSE)

windlib 2.0b

LZ version = v01

WIND/WAVES Summary Plot (Page 1) for 28-FEB-2014, DOY = 59

DAILY 2014-03-01 19:46:04
 Re = 243.64 (222.63, 98.99, 0.18 GSE)



RAD2
 Antenna Ey
 Mode LIN(1)
 SUM/SEP SEP
 Toggle OFF
 RAD1
 Antenna Ex
 Mode LIS(2,4)
 SUM/SEP SUM
 Toggle OFF
 TNR
 Antenna ExEy
 Mode A-32
 Sweep ACE