

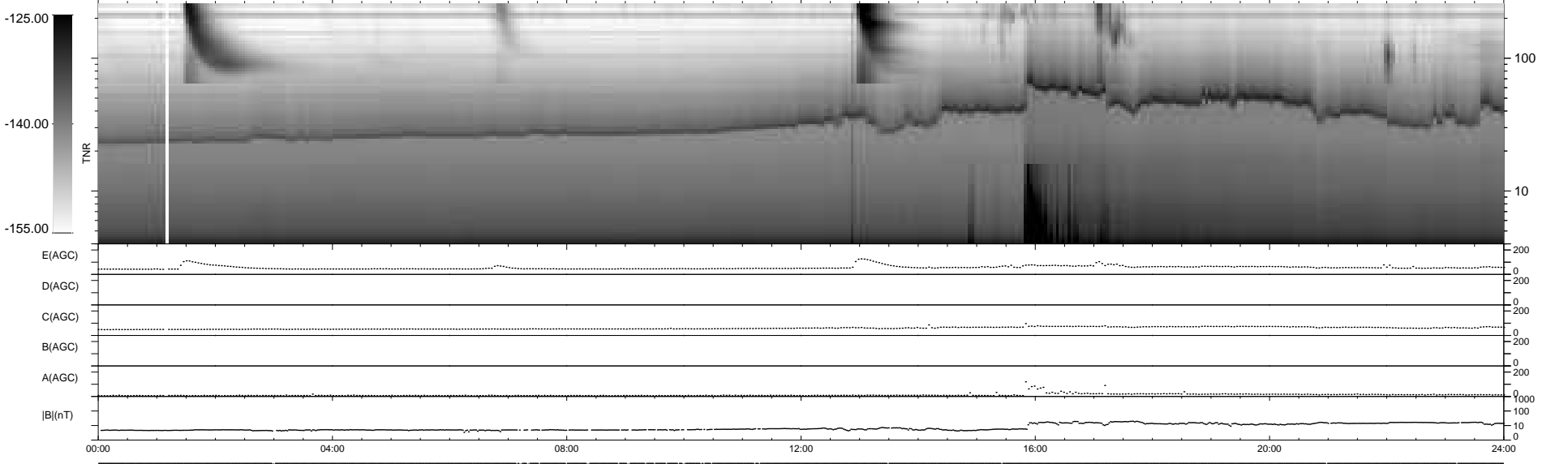
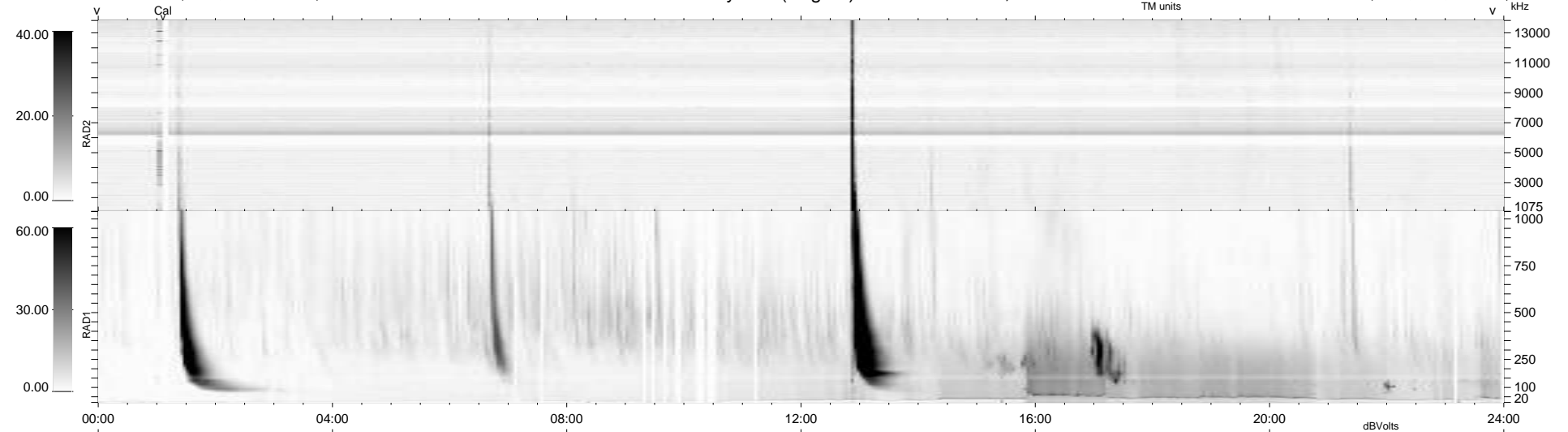
29 bad + 910 good MF/939MF projected (96%) - 0 missing MFs
 Avg interval = 180 secs
 Re = -241.30 (220.04, 99.01, -1.08 GSE)

windlib 2.0b

LZ version = v02

WIND/WAVES Summary Plot (Page 1) for 27-FEB-2014, DOY = 58

DAILY 2014-03-04 11:46:03
 Re = 242.49 (221.34, 99.05, -0.45 GSE)



RAD2
 Antenna Ey
 Mode LIN(1)
 SUM/SEP SEP
 Toggle OFF
 RAD1
 Antenna Ex
 Mode LIS(2/4)
 SUM/SEP SUM
 Toggle OFF
 TNR
 Antenna ExEy
 Mode A-32
 Sweep ACE