

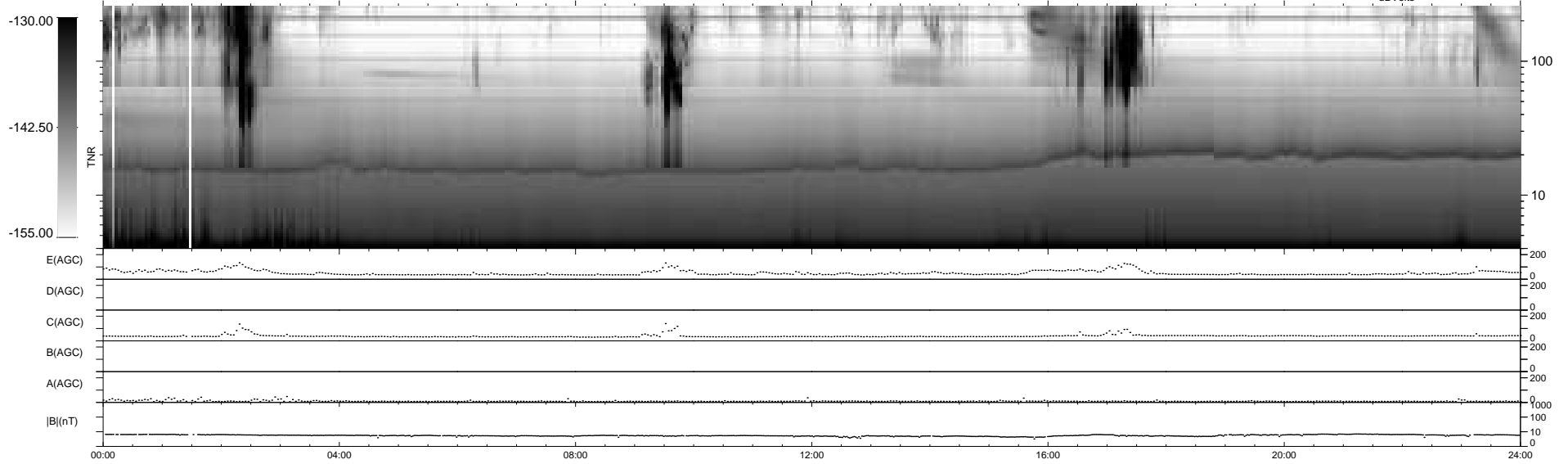
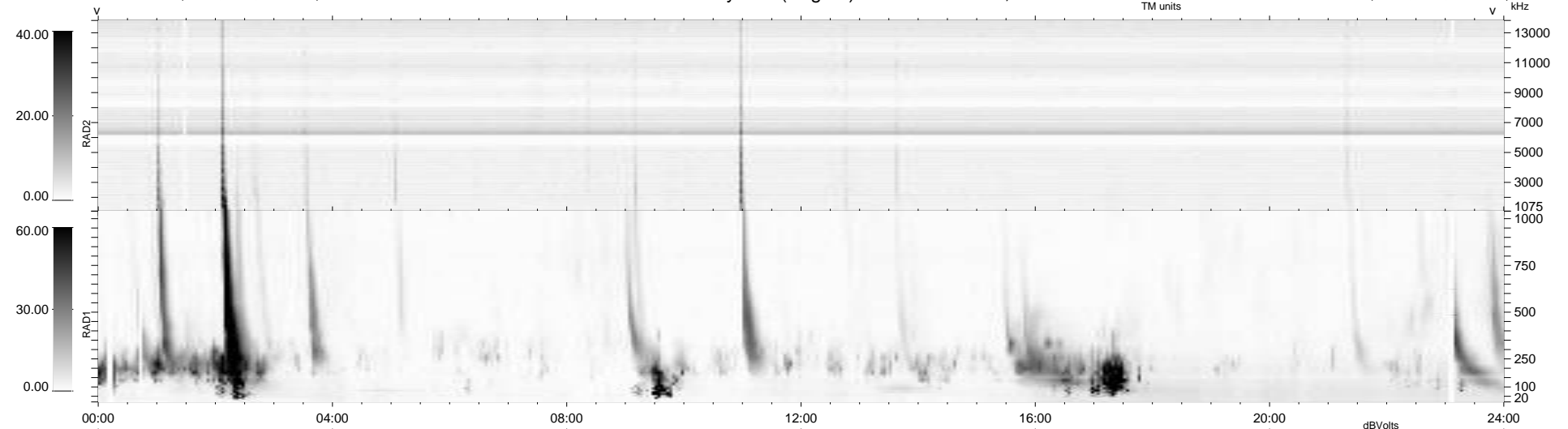
17 bad + 923 good MF/940MF projected (98%) - 0 missing MFs
 Avg interval = 180 secs
 Re = 234.68 (213.50, 97.34, -4.26 GSE)

windlib 2.0b

LZ version = v01

WIND/WAVES Summary Plot (Page 1) for 22-FEB-2014, DOY = 53

DAILY 2014-02-24 10:47:00
 Re = 236.04 (214.77, 97.85, -3.63 GSE)



RAD2
 Antenna Ey
 Mode LIN(1)
 SUM/SEP SEP
 Toggle OFF
 RAD1
 Antenna Ex
 Mode LIS(2,4)
 SUM/SEP SUM
 Toggle OFF
 TNR
 Antenna ExEy
 Mode A-32
 Sweep ACE